

BERNAT® NORDIC DUO SET | KNIT



 KNIT | SKILL LEVEL: INTERMEDIATE

MEASUREMENT

Girl's Version

To fit chest measurement

2 yrs 22" [56 cm]

4 yrs 24" [61 cm]

6 yrs 26" [66 cm]

Finished chest

2 yrs 24½" [62 cm]

4 yrs 26½" [67.5 cm]

6 yrs 28½" [72.5 cm]

Hat: To fit child **2 (4-6)** yrs.

Doll's Version

Size: To fit 18" [45 cm] Doll.

GAUGE

18 sts and 24 rows = 4" [10 cm] with larger needles in stocking st.

MATERIALS

Bernat® Super Value™ (7 oz/197 g; 426 yds/389 m)

Girl's Set

Sizes	2	4	6	yrs
Main Color (MC) Natural (07414)	1	1	1	ball
Contrast A Cherry Red (53436)	1	1	1	ball
Contrast B Burgundy (07636)	1	1	1	ball

Doll's Set

Main Color (MC) Natural (07414)	1	ball
Contrast A Cherry Red (53436)	1	ball
Contrast B Burgundy (07636)	1	ball

Sizes U.S. 7 (4.5 mm) and U.S. 8 (5 mm) circular knitting needles 20" [51 cm] long. Sets of four U.S. 7 (4.5 mm) and U.S. 8 (5 mm) double-pointed knitting needles **or size needed to obtain gauge**. Stitch marker. 4 stitch holders. 2 buttons for Doll's Sweater.

INSTRUCTIONS

GIRL'S SET

The instructions are written for smallest size. If changes are necessary for larger sizes the instructions will be written thus (). When only one number is given, it applies to all sizes. For ease in working, circle all numbers pertaining to your size.

SWEATER

Note: Sweater is worked in the round in one piece on circular needle. Sleeves are worked on double-pointed needles, then joined to Body for Yoke. When working from charts, carry yarn not in use loosely across WS of work.

Body

With A and smaller circular needle, cast on **106 (114-122)** sts. Join in rnd, placing a marker on first st. Break A.

With MC, proceed in (K1. P1) ribbing for **1½ (2-2)" [4 (5-5) cm]**, inc 6 sts evenly across last rnd. **112 (120-128)** sts.

Change to larger circular needle and work Chart I to end of Chart *reading rows from right to left*, noting 4-st rep will be worked **28 (30-32)** times. Rows 1 to 10 of Chart I form pat.

ABBREVIATIONS:

Alt = Alternate

Approx = Approximately

Beg = Beginning

Cont = Continue(ity)

Dec = Decrease(ing)

Inc = Increase(ing)

K = Knit

K2tog = Knit next 2 stitches together

P = Purl

Pat = Pattern

Rem = Remain(ing)

Rep = Repeat

Rnd(s) = Round(s)

RS = Right side

Pat = Pattern

St(s) = Stitch(es)

Tog = Together

WS = Wrong side

Yo = Yarn over

Chart I is shown on page 3. Cont in Chart I pat until work from beg measures approx **8 (10-11½)" [20.5 (25.5-29) cm]**, ending on a 5th or 10th row of Chart I pat.

Next rnd: With MC, K2. Slip these 2 sts and last 2 sts from previous rnd onto a st holder. **K56 (60-64)**. Slip last 4 sts onto a st holder. Knit to end of rnd. Leave these sts on a st holder.

Sleeves

With A and set of smaller double-pointed needles, cast on 32 sts. Divide sts onto 3 needles: (11, 11, 10). Join in rnd, placing a marker on first st. Break A.

With MC, proceed in (K1. P1) ribbing for **1½ (2-2)" [4 (5-5) cm]**, inc 4 sts evenly across last rnd. 36 sts.

Change to set of larger double-pointed needles and work Chart I to end of Chart noting 4-st rep will be worked 9 times.

Rows 1 to 10 of Chart I form pat. Cont in Chart I pat, inc 1 st at each end of next and every following **10th (6th-6th)** rnd until there are **40 (42-46)** sts.

Cont even in Chart I pat, until work from beg measures approx **8½ (10-11½)" [21.5 (25.5-29) cm]**, ending on a 5th or 10th row of Chart I pat.

BERNAT® NORDIC DUO SET | KNIT

Next rnd: K2. Slip these 2 sts and last 2 sts onto a safety pin for armhole. Break yarn leaving an end 12" [30 cm] long for grafting at underarm. Leave **36 (38-42)** sts on a spare needle.

Yoke

Next rnd: *With MC, **K36 (38-42)** of Sleeve. **K52 (56-60)** of Body. Rep from * once more.

176 (188-204) sts. Mark last st as end of rnd.

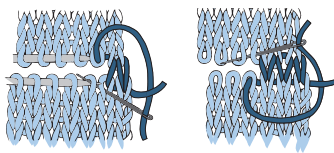
Next rnd: With MC, *K2tog. **K20 (45-49)**. Rep from * around. **168 (184-200)** sts.

Work Chart II to end of chart, *reading rows from right to left* and noting 8-st rep will be worked **21 (23-25)** times. Chart II is shown on page 3. **63 (69-75)** sts. Break MC and A.

Note: Change to set of larger double-pointed needles as necessary. With B, knit **0 (4-3)** rnds.

Next rnd: **K0 (6-3)**. *K2tog. **K7 (7-6)**. Rep from * around. **56 (62-66)** sts. Knit **1 (0-5)** rnd(s).

Collar: Change to set of smaller double-pointed needles and proceed in (K1. P1) ribbing until Collar measures 4½" [11.5 cm]. Cast off in ribbing. Graft sleeves at underarms.



HAT

With set of smaller double-pointed needles and A, cast on **80 (84-88)** sts. Join in rnd, placing a marker on first st. Break A.

With MC, proceed in (K1. P1) ribbing for **1½ (2-2)" [4 (5-5) cm]**, inc 4 sts evenly across last rnd.

84 (88-92) sts. Change to set of larger double-pointed needles and work Chart III to end of chart, *reading rows from right to left* and noting 4-st rep will be worked **21 (22-23)** times. Chart III is shown on page 3. Break MC and B.

Next rnd: With A, knit, dec **0 (4-2)** sts evenly around. **84 (84-90)** sts.

Shape top: 1st rnd: ***K12 (12-13)**. K2tog. Rep from * around. **78 (78-84)** sts.

2nd and alt rnds: Knit.

3rd rnd: ***K11 (11-12)**. K2tog. Rep from * around. **72 (72-78)** sts.

5th rnd: ***K10 (10-11)**. K2tog. Rep from * around. **66 (66-72)** sts.

6th rnd: Knit.

Cont in this manner, dec 6 sts evenly around next and every following alt rnd until there are **36 (36-42)** sts. Break yarn, leaving a long end. Thread yarn through rem sts and fasten securely.

DOLL'S SET SWEATER

Note: Sweater is worked in the round in one piece on double-pointed needles. Sleeves are worked on double-pointed needles, then joined to Body for Yoke. When working from charts, carry yarn not in use loosely across WS of work.

Body

With A and set of smaller double-pointed needles, cast on 64 sts. Divide sts onto 3 needles: (**21, 21, 22**) sts. Join in rnd, placing marker on first st. Break A.

With MC, work 3 rnds in (K1. P1) ribbing.

Change to set of larger double-pointed needles and knit Chart I to end of chart, *reading rows from right to left* and noting 4-st rep will be worked 16 times. Cont working Chart I until work from beg measures approx 4" [10 cm], ending on a 4th row of Chart I. Chart I is shown on page 3.

Next rnd: With MC, K1. Slip this st and last st from previous rnd onto a st holder. K32. Slip last 2 sts onto a st holder. Knit to end of rnd.

Sleeves

With A and set of smaller double-pointed needles, cast on 16 sts. Divide sts onto 3 needles: (**5, 5, 6**) sts. Join in rnd, placing marker on first st. Break A.

With MC, work 3 rnds in (K1. P1) ribbing. Change to set of larger double-pointed needles and knit Chart I to end of chart, noting 4-st rep will be worked 4 times.

Cont working Chart I, inc 1 st at each end of next and every following 6th rnd until there are 22 sts.

Cont even until work from beg measures approx 4" [10 cm], ending on a 4th row of Chart I.

Next rnd: K1. Slip this st and last st onto a safety pin for armhole. Break yarn, leaving an end 4" [10 cm] long for grafting at underarm. Leave 20 sts on a spare needle.

Yoke

With MC and set of larger double-pointed needles, *K20 of Sleeve. K30 of Body. Rep from * once more. 100 sts. Divide sts onto 3 needles

(**33, 33, 34**) sts. Join in rnd, placing marker on first st.

Knit rnds 5 to 8 only of Chart III, *reading rnds from right to left* and noting 4-st rep will be worked 25 times.

Next rnd: With B, K4. *K2tog. K10. Rep from * around. 92 sts.

Next rnd: *With A, K1. With B, K3. Rep from * around.

Next rnd: With B, K4. *K2tog. K9. Rep from * around. 84 sts.

Next rnd: With B, K4. *K2tog. K8. Rep from * around. 76 sts.

Next rnd: *With A, K1. With B, K3. Rep from * around.

Next rnd: *With A, K2. With B, K1. With A, K1. Rep from * around.

Next rnd: With A, K4. *K2tog. K7. Rep from * around. 68 sts.

Left Back opening

Note: Work back and forth across needle in rows. **1st row:** With A, K4. *K2tog. K6. Rep from * to end of row. 60 sts. Turn.

2nd and alt rows: K1. Purl to end of row.

3rd row: K4. *K2tog. K5. Rep from * to end of row. 52 sts.

5th row: K4. *K2tog. K4. Rep from * to end of row. 44 sts.

7th row: K4. *K2tog. K3. Rep from * to end of row. 36 sts.

9th row: K4. *K2tog. K6. Rep from * to end of row. 32 sts.

10th row: K1. Purl to end of row.

Work 3 rows in (K1. P1) ribbing. Cast off in ribbing. Graft sleeves at underarms.

BERNAT® NORDIC DUO SET | KNIT

Buttonhole edging: With RS facing, B and pair of smaller double-pointed needles, pick up and knit 10 sts along left side of Back opening.
Next row: (K2, yo, K2tog) twice. K2. Cast off.
 Sew buttons to correspond to buttonholes.

HAT

With A and set of smaller double-pointed needles, cast on 52 sts. Divide sts onto 3 needles: (17, 17, 18). Join in rnd, placing marker on first st. Break A.

With MC, work 3 rnds in (K1, P1) ribbing. Change to set of larger double-pointed needles and work Chart III until row 16 of chart has been completed, *reading rows from right to left* and noting 4-st rep will be worked 13 times. Break MC and B.

Next rnd: With A, knit, dec 4 sts evenly around. 48 sts.

Shape top: 1st rnd: With A, *K4, K2tog. Rep from * around. 40 sts.

2nd rnd: *K3, K2tog. Rep from * around. 32 sts.

3rd rnd: *K2, K2tog. Rep from * around. 24 sts.

4th rnd: *K1, K2tog. Rep from * around. 16 sts.

5th rnd: *K2tog. Rep from * around. 8 sts. Break yarn, leaving a long end. Thread yarn through rem sts and fasten securely.

Key

- = MC (Natural)
- = A (Cherry Red)
- = B (Burgundy)
- ⌒ = K2tog

Chart I

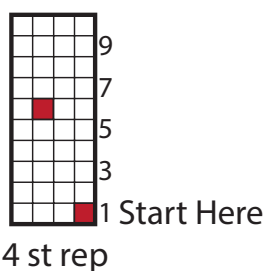


Chart II

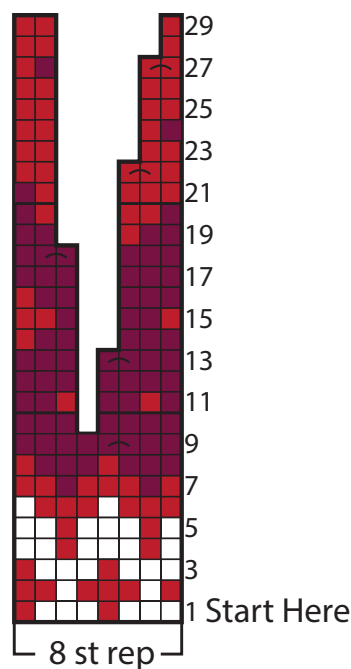


Chart III

