



Compassion Scarf

Here is an amazing reversible cable pattern that looks wonderful from either side. We suggest that you knit it in Perfect Pink to show support for breast cancer awareness.

Designed by Ann Regis.

Scarf measures 6½" x 63" excluding fringe.

RED HEART® Super Saver®: 1 skein 706 Perfect Pink.

Knitting Needles: 6mm [US 10].
Cable needle, yarn needle.

GAUGE: 14 sts = 4"; 18 rows = 4" in St st. **CHECK YOUR GAUGE.** Use any size needles to obtain the gauge.

Special Abbreviations

M1 (make one stitch) = Lift running thread before next stitch onto left needle and knit into the back loop.

C6B = slip next 3 sts to cable needle and hold at back of work, k3, then k3 from cable needle.

C6F = slip next 3 sts to cable needle and hold at front of work, k3, then k3 from cable needle.

C10B = slip next 5 sts to cable needle and hold at back of work, k5, then k5 from cable needle.

C10F = slip next 5 sts to cable needle and hold at front of work, k5, then k5 from cable needle.

SCARF

Cast on 31 sts.

Foundation Row: K1, * p1, k1; repeat from * across.

Row 1 (Right Side): K1, [p1, k1] twice, k9, k1, p1, k1, k9, k1, [p1, k1] twice.

Row 2: K1, [p1, k1] twice, p9, k1, p1, k1, p9, k1, [p1, k1] twice.

Row 3: K1, [p1, k1] twice, k3, C6B, k1, p1, k1, C6F, k3, k1, [p1, k1] twice.

Rows 4 and 6: K1, [p1, k1] twice, p9, k1, p1, k1, p9, k1, [p1, k1] twice.

Row 5: K1, [p1, k1] twice, C6B, k3, k1, p1, k1, k3, C6F, k1, [p1, k1] twice.

Row 7: K1, [p1, k1] twice, k9, k1, p1, k1, k9, k1, [p1, k1] twice.

Row 8: Repeat Row 4.

Rows 9-16: Repeat Rows 7 and 8.

Row 17: K1, [p1, k1] twice, C6F, k3, k1, p1, k1, k3, C6B, k1, [p1, k1] twice.

Rows 18 and 20: Repeat Row 4.

Row 19: K1, [p1, k1] twice, k3, C6F, k1, p1, k1, C6B, k3, k1, [p1, k1] twice.

Rows 21-30: Repeat Rows 7 and 8.

Rows 31-34: Repeat Rows 3-6.

Row 35: K1, p1, C6B, k6, k1, p1, k1, k6, C6F, p1, k1.

Rows 36 and 38: K1, p1, p12, k1, p1, k1, p12, p1, k1.

Row 37: K1, p1, k12, k1, p1, k1, k12, p1, k1.

Rows 39-46: Repeat Rows 37 and 38.

Row 47: K1, p1, slip next 3 sts to cable needle and hold at front of work, k1, p1, k1, then k3 from cable needle, k6, k1, p1, k1, k6, slip next 3 sts to cable needle and hold at back of work, k3, then k1, p1, k1 from cable needle, p1, k1.

Rows 48, 50, and 52: K1, [p1, k1] twice, p9, k1, p1, k1, p9, k1, [p1, k1] twice.

Row 49: K1, [p1, k1] twice, k3, C6F, k1, p1, k1, C6B, k3, k1, [p1, k1] twice.

Row 51: K1, [p1, k1] twice, C6F, k3, k1, p1, k1, k3, C6B, k1, [p1, k1] twice.

Row 53: K1, [p1, k1] twice, k9, k1, p1, k1, k9, k1, [p1, k1] twice.



Row 54: Repeat Row 48.

Rows 55-62: Repeat Rows 53 and 54.

Repeat Rows 3-62 twice more and then repeat Rows 3-30 once more increasing 1 st in each “k9” section on next-to-last row – 33 sts. Scarf should measure about 30” from beginning. Now work second cable pattern.

Row 1: K1, [p1, k1] twice, C10F, k1, p1, k1, C10B, k1, [p1, k1] twice.

Row 2: K1, [p1, k1] twice, p10, k1, p1, k1, p10, k1, [p1, k1] twice.

Row 3: K1, [p1, k1] twice, k10, k1, p1, k1, k10, k1, [p1, k1] twice.

Row 4: Repeat Row 2.

Rows 5-14: Repeat Rows 3 and 4.

Repeat Rows 1-14 thirteen more times, then repeat Row 1 again.

Next Row: K1, * p1, k1; repeat from * across.

Bind off in Seed st pattern decreasing 2 sts across each cable by working “k2tog, then p2tog”.

Fringe

Cut 10” strands of yarn. Holding 5 strands together, knot 3 fringes at each corner as shown. Trim yarn ends.

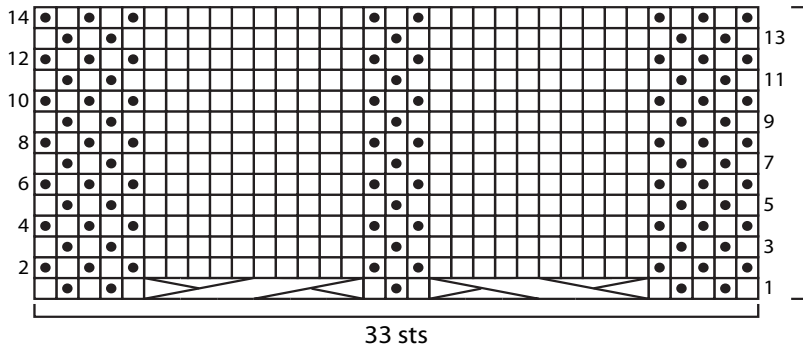


RED HEART® Super Saver®, Art. E300 available in solid color 7 oz (198 g), 364 yd (333 m); multi color, heather and print 5 oz (141 g), 244 yd (223 m), flecks 5 oz (141 g), 260 yd (238 m) skeins.

ABBREVIATIONS: **K** = knit; **mm** = millimeters; **P** = purl; **St st** = Stockinette stitch (Knit on right side rows; Purl on wrong side rows.); **st(s)** = stitch(es); **tog** = together; **[]** = work directions in brackets the number of times specified.

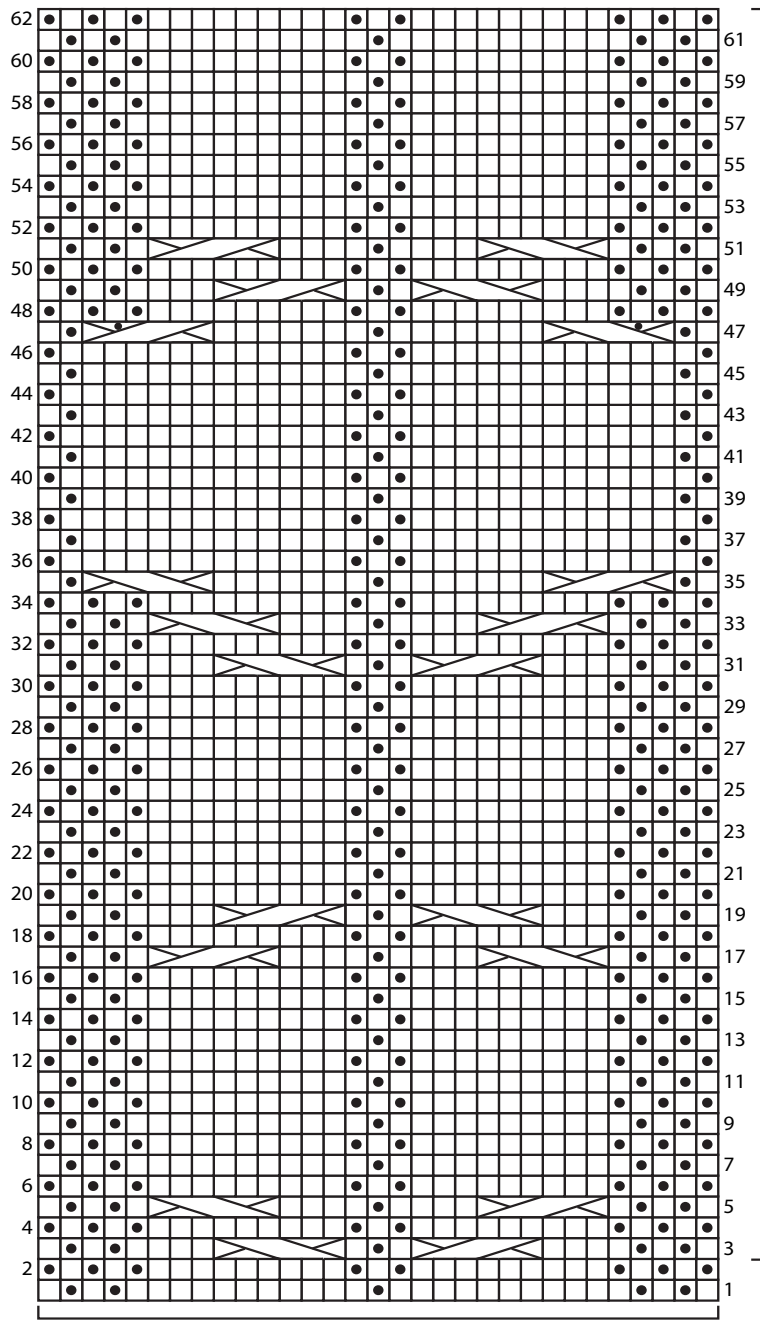


COMPASSION SCARF | KNIT



14-row repeat
(work a total of 14 times, then repeat Row 1 once more)

33 sts



60-row repeat
(work a total of 3 times, then repeat Rows 3-30 once more)

31 sts

- k on RS, p on WS
- p on RS, k on WS
- C6B
- C6F
- C10B
- C10F
- Slip 3 sts to cable needle and hold at back of work, k3, then k1, p1, k1 from cable needle
- Slip 3 sts to cable needle and hold at front of work, k1, p1, k1, then k3 from cable needle



SUMMER SAILOR SWEATER | KNIT

