



LW4651



INTERMEDIATE

## crochet

Designed by Margaret Hubert

### What you will need:

**RED HEART® Soft®:** 1 (1, 1, 2, 2) balls 9010 Charcoal **A** and 1 (1, 1, 1, 1) ball each 4614 Black **B**, 4608 Wine **C**, 9851 Royal Blue **D**, and 1882 Toast **E**

**Susan Bates® Crochet Hook:** 5.5mm [US I-9]

Yarn needle

**GAUGE:** 4 mesh pattern repeats = 4" (10 cm) (one mesh pattern repeat consists of one single crochet and one ch-5 space); 7 rows = 4" (10 cm) in mesh pattern after blocking. **CHECK YOUR GAUGE. Use any size hook to obtain the gauge.**

### Buy Yarn



**RED HEART® Soft®,** Art. E728 available in solid color 5 oz (141 g), 256 yd (234 m), print 4 oz (113 g), 204 yd (187 m), and heather 4oz (113g), 212 yd (194m) balls



## Freeform Cropped Topper

*Crochet something a bit out-of-the-ordinary and oh, so fun to make! First a mesh base is made and then motifs are sewn on as shown or any arrangement you desire. It's perfect to wear over long sleeves or sleeveless tops and dresses.*

**Directions are for size Small. Changes for sizes Medium, Large, 1X, and 2X are in parentheses.**

**Finished Chest:** 36 (40, 44, 48, 52)" [86.5 (96.5, 106.5, 117, 127) cm] after blocking mesh underlining

**Finished Length:** 11 (11½, 12, 12½, 13)" [28 (29, 30.5, 32, 33) cm]

### Special Stitch

**reverse sc (reverse single crochet)** = Work single crochet in opposite direction from which you would usually work (left to right if you are right-handed and right to left if you are left-handed). This stitch is also known as crab stitch. It creates a rope-like twisted single crochet edging.

### Notes

1. Pullover is made from mesh underlining on which motifs are sewn.
2. Underlining is made in 5 pieces: back, 2 front pieces, and sleeves.
3. The number of motifs shown is for size Small. Make additional motifs to cover larger sizes as needed.
4. Sew motifs to underlining as displayed or create your own arrangement. Each motif does not have to touch a neighboring motif. Leave sections of underlining open if desired.
5. Block underlining to finished measurements before sewing motifs; blocking the pullover after motifs are applied is not recommended.
6. To change color, work last stitch of old color to last yarn over. Yarn over with new color and draw through all loops on hook to complete stitch. Proceed with new color. Cut old color unless otherwise instructed.

## TOPPER

### Back

With **A**, ch 92 (102, 112, 122, 132).

**Foundation Row:** Sc in 2nd ch from hook, \*ch 5, skip next 4 ch, sc in next ch; repeat from \* across, turn—18 (20, 22, 24, 26) ch-5 spaces.

**Row 1:** Ch 5, sc in first ch-5 space, \*ch 5, sc in next ch-5 space; repeat from \* across, ch 2, dc in last sc (ch 2, dc count as last ch-5 space here and throughout), turn—19 (21, 23, 25, 27) ch-5 spaces.

**Row 2:** Ch 7 (counts as dc, ch 5 here and throughout), skip first ch-5 space, sc in next ch-5 space, \*ch 5, sc in next ch-5 space; repeat from \* across to last ch-5 space, ch 5, skip last ch-5 space, dc in 3rd ch of beginning ch, turn—18 (20, 22, 24, 26) ch-5 spaces.

**Row 3:** Ch 5, sc in first ch-5 space, \*ch 5, sc in next ch-5 space; repeat from \* across, ch 2, dc in 2nd ch of beginning ch, turn—19 (21, 23, 25, 27) ch-5 spaces. Repeat Rows 2 and 3 until piece measures 4" (10 cm) ending with a Row 2.

### Armhole Shaping

**Next Row:** Work 4 slip sts in first 2 (2, 2, 3, 3) ch-5 spaces, \*ch 5, sc in next ch-5 space; repeat from \* across to last 2 ch-5 spaces; leave last 2 (2, 2, 3, 3) ch-5 spaces unworked, turn—14 (16, 18, 18, 20) ch-5 spaces. Repeat Rows 2 and 3 of back until piece measures 5 (5½, 6, 6½, 7)" [12.5 (14, 15, 16.5, 18) cm].

Continued...



2015  
WOMEN'S CHOICE AWARD  
AMERICA'S MOST RECOMMENDED  
YARN BRAND



**Please Note:** Print this pattern using Landscape Orientation.

Find more ideas & inspiration: [redheart.com](http://redheart.com)

©2015 Coats & Clark

**RedHeart.com**

Page 1 of 4

## First Shoulder

**Next Row:** Ch 5, sc in first ch-5 space, \*ch 5, sc in next ch-5 space; repeat from \* 0 (0, 0, 1, 1) time(s), turn—2 (2, 2, 3, 3) ch-5 spaces. Repeat last row until piece measures 7 (7½, 8, 8½, 9)" [18 (19, 20.5, 21.5, 23) cm]. Fasten off.

## Second Shoulder

With first shoulder near your hook hand, skip first 10 (12, 14, 12, 14) ch-5 spaces, join **A** with slip st in next ch-5 space, work same as first shoulder on remaining 2 (2, 2, 3, 3) ch-5 spaces until second shoulder measures same length as first.

## Front (make 2)

With **A**, ch 27 (32, 37, 42, 47).

**Foundation Row:** Sc in 2nd ch from hook, \*ch 5, skip next 4 ch, sc in next ch; repeat from \* across, turn—6 (7, 8, 9, 10) sc and 5 (6, 7, 8, 9) ch-5 spaces.

**Row 1 (increase row):** Ch 10, sc in first sc, \*ch 5, sc in next ch-space; repeat from \* across, ch 2, dc in last sc, turn—6 (7, 8, 9, 10) ch-5 spaces and 1 ch-10 space.

**Row 2:** Ch 7, skip first ch-5 space, sc in next ch-5 space, \*ch 5, sc in next ch-5 space; repeat from \* across to ch-10 space, ch 2, dc in 6th ch of beginning ch, turn—6 (7, 8, 9, 10) ch-5 spaces.

**Row 3 (increase row):** Ch 10, sc in first dc, \*ch 5, sc in next ch-space; repeat from \* across, ch 2, dc in 3rd ch of beginning ch, turn—7 (8, 9, 10, 11) ch-5 spaces and 1 ch-10 space.

Repeat Rows 2 and 3 until front has 9 (10, 11, 12, 13) ch-5 spaces and at the same time measures 4" (10 cm), ending with a Row 3.

## Armhole Shaping

**Next Row:** Work 4 slip sts in first 2 (2, 2, 3, 3) ch-5 spaces, \*ch 5, sc in next ch-5 space; repeat from \* across to ch-10 space, ch 2, dc in 6th ch of beginning ch, turn—7 (8, 9, 9, 10) ch-5 spaces.

Repeat Rows 2 and 3 of back until armhole measures 2" (5cm) ending with a Row 3.

## Shoulder

**Next Row:** Work 4 slip sts in first 5 (6, 7, 6, 7) ch-5 spaces, [ch 5, sc in next ch-5 space] 2 (2, 2, 3, 3) times, turn—2 (2, 2, 3, 3) ch-5 spaces.

**Next Row:** Ch 5, sc in first ch-5 space, \*ch 5, sc in next ch-5 space; repeat from \* 0 (0, 0, 1, 1) time(s), turn.

Repeat last row until front measures same length from lower edge as back. Fasten off.

## Sleeve (make 2)

Beginning at outer edge, ch 22.

**Foundation Row:** Sc in 10th ch from hook (beginning ch count as 4 ch, first ch-5 space), \*ch 5, skip next 4 ch, sc in next ch; repeat from \* once, turn—4 ch-5 spaces.

**Row 1 (increase row):** Ch 9 (counts as 4 ch, first ch-5 space here and throughout), sc in first ch-5 space, \*ch 5, sc in next ch-5 space; repeat from \* twice ending last repeat in 5th ch of beginning ch, turn—5 ch-5 spaces.

**Row 2 (increase row):** Ch 9, sc in first ch-5 space, \*ch 5, sc in next ch-5 space; repeat from \* across ending last repeat in 4th ch of beginning ch, turn—6 ch-5 spaces. Repeat Row 2 until sleeve has 14 (15, 16, 17, 18) ch-5 spaces.

**Next Row:** Ch 5, sc in first ch-5 space, \*ch 5, sc in next ch-5 space; repeat from \* across ending last repeat in 4th ch of beginning ch, turn.

**Next Row:** Ch 5, sc in first ch-5 space, \*ch 5, sc in next ch-5 space; repeat from \* across, turn.

Repeat last 2 rows until sleeve measures 7 (7½, 8, 8½, 9)" [18 (19, 20.5, 21.5, 23) cm]. Fasten off.

## MOTIFS

### Lazy J (make 8 - 2 each of B & A, B & C, B & D, and B & E)

Motif is worked from right side only. Do not turn at the end of any row.

With **B**, ch 10.

**Row 1 (right side):** Sc in 2nd ch from hook, 2 sc in next ch, hdc in next 2 ch, 2 hdc in next ch, dc in next 2 ch, 2 dc in next ch, 3 tr in last ch—14 sts.

**Row 2:** Ch 1, working in front loops only, reverse sc in each st; change to 2nd color, do not cut **B**.

**Row 3:** With right side facing and working in unworked back loops of Row 1, sc in first 3 sts, hdc in next 3 sts, 2 hdc in next st, dc in next 4 sts, 2 dc in next st, tr in last 2 sts—16 sts.

**Row 4:** Repeat Row 2; change to **B**, do not cut 2nd color.

**Row 5:** With right side facing and working in unworked back loops of Row 3, sc in first 4 sts, hdc in next 3 sts, 2 hdc in next st, dc in next 4 sts, 2 dc in next st, tr in last 2 sts—17 sts.

**Row 6:** Repeat Row 2; change to 2nd color, cut **B**.

**Row 7:** With right side facing and working in unworked back loops of Row 5, sc in first 4 sts, hdc in next 3 sts, 2 hdc in next st, dc in next 4 sts, 2 dc in next st, tr in next 2 sts; leave remaining st unworked—17 sts.

**Row 8:** Repeat Row 2. Fasten off.

### Fan (make 9 - 3 each with B & C, B & D, and B & E)

With **B**, ch 5; join with slip st in first ch to form a ring.

**Row 1:** Ch 3 (counts as first dc here and throughout), 6 dc in ring; change to 2nd color, turn—7 dc.

**Row 2 (right side):** Ch 4 (counts as dc, ch 1), dc in next st, [ch 1, dc in next st] 4 times, ch, 1, dc in top of beginning ch, turn—7 dc and 6 ch-1 spaces.

**Row 3:** Ch 3, 2 dc in first ch-1 space, 3 dc in each remaining ch-1 space; change to **B**, turn—18 dc.

**Row 4:** Ch 3, dc in first dc (same st as base of beginning ch-3), [ch 5, dc in next 3 dc] 5 times, ch 5, skip next dc, 2 dc in top of beginning ch; change to 2nd color, turn—6 ch-5 spaces.

**Row 5:** Ch 1, sc in first dc, [7 sc in next ch-5 space, skip next dc, sc in next dc, skip next dc] 6 times, sc in last dc—44 sc. Fasten off.

### Flower (make 6 - 2 each with C, D, and E)

Ch 5; join with slip st in first ch to form a ring.

**Round 1 (right side):** Ch 3, 9 dc in ring; join with slip st in top of beginning ch—10 dc.

**Round 2:** Working in back loops only, [ch 2, 3 tr in next dc, ch 2, slip st in next dc (petal made)] 5 times; join with slip st to first ch of beginning ch—5 petals. Fasten off.

### Paisley (make 2 with B, C, and E)

With **B**, ch 21.

**Row 1 (right side):** Sc in 2nd ch from hook and in next 5 ch, hdc in next 6 ch, dc in next 7 ch, 5 dc in last ch; working on opposite side of foundation ch, dc in next 5 ch, hdc in next ch, sc in next ch, slip st in next ch; leave remaining ch unworked, turn—32 sts. Fasten off.

Continued...



Please Note: Print this pattern using Landscape Orientation.

Find more ideas & inspiration: [redheart.com](http://redheart.com)

©2015 Coats & Clark

RedHeart.com

Page 2 of 4

**Row 2:** With wrong side facing, join **C** with sc in first slip st, sc in next 7 sts, 2 sc in next 5 sts, sc in each remaining st; change to **E**; drop **C** but do not cut, turn—37 sc.

**Row 3:** Ch 1, sc in first 10 sc, hdc in next 5 sc, dc in next 8 sc, 2 dc in next 5 sc, dc in next 5 sc, hdc in next 4 sc; working in unworked ch of opposite side of foundation ch, sc in next 3 ch; leave remaining ch unworked, turn—45 sts.

**Row 4:** Ch 1, sc in first 14 sts, [2 hdc in next st, dc in next st] 5 times, sc in each remaining st; change to **C**, turn—52 sts. Cut **E**.

**Row 5:** Ch 1, sc in first 26 sts, [2 sc in next st, sc in next st] 6 times, sc in next 12 sts; working in unworked ch of opposite side of foundation ch, dc in next ch, hdc in next ch, sc in next ch, slip st in next ch; leave remaining ch unworked, do not turn.

**Row 6:** Ch 1 reverse sc in each st. Fasten off.

**Circle (make 12 - 3 each with B & A, B & C, B & D, B & E)**

With **B**, ch 4; join with slip st in first ch to form a ring.

**Round 1 (right side):** Ch 3, 13 dc in ring; join with slip st in top of beginning ch—14 dc. Fasten off.

**Round 2:** Join 2nd color with slip st in any dc, ch 4 (counts as dc, ch 1), dc in next dc, [ch 1, dc in next dc] 12 times, ch 1; join with slip st in 3rd ch of beginning ch—14 dc and 14 ch-1 spaces. Fasten off.

**Triangle (make 2)**

With **A**, ch 4.

**Row 1:** Work 2 dc in first ch (beginning ch count as first dc), turn—3 dc.

**Row 2:** Ch 3, dc in first dc, dc in next dc, 2 dc in top of beginning ch, turn—5 dc.

**Row 3:** Ch 3, dc in first dc, dc in next 3 dc, 2 dc in top of beginning ch, turn—7 dc.

**Row 4:** Ch 3, skip first dc, dc in next 5 dc, dc in top of beginning ch. Fasten off.

**FINISHING**

Weave in ends.

Turn one front piece over so that straight edges are at sides and curved edges (with ch-10 spaces) are at center. Sew fronts together at center 2" (5 cm) from top edge, leaving remaining curved edges unsewn. Sew fronts to back at shoulders. Center longer edge of sleeve at shoulder seam, sew to front and back, then sew underarm and side seams.

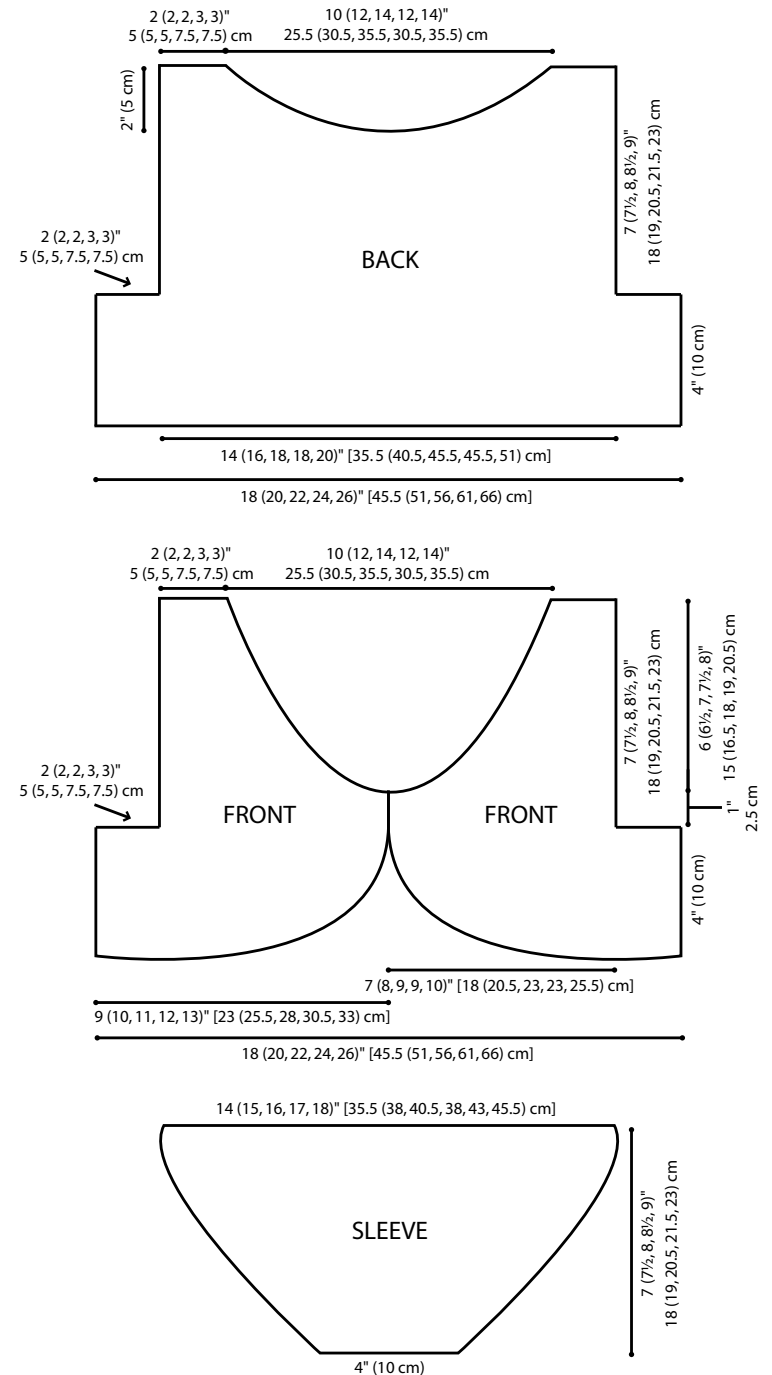
Block mesh underlining before motifs are sewn on. Lay underlining on a padded surface, sprinkle or spray with water, pat into shape and with rustproof pins, pin in place. Allow to dry thoroughly.

Arrange motifs on underlining as shown in photograph or as desired. Motifs can be placed closed together or set apart so underlining is visible. Circles and triangles are intended to fill in spaces between other motifs. Sew all motifs to underlining. Weave in remaining ends.

**ABBREVIATIONS**

**A, B, C** = Color A, Color B, Color C, etc.; **ch** = chain; **dc** = double crochet; **hdc** = half double crochet; **sc** = single crochet; **st(s)** = stitch(es); **tr** = treble (triple) crochet; [ ] = work directions in brackets the number of times specified; \* = repeat whatever follows the \* as indicated.

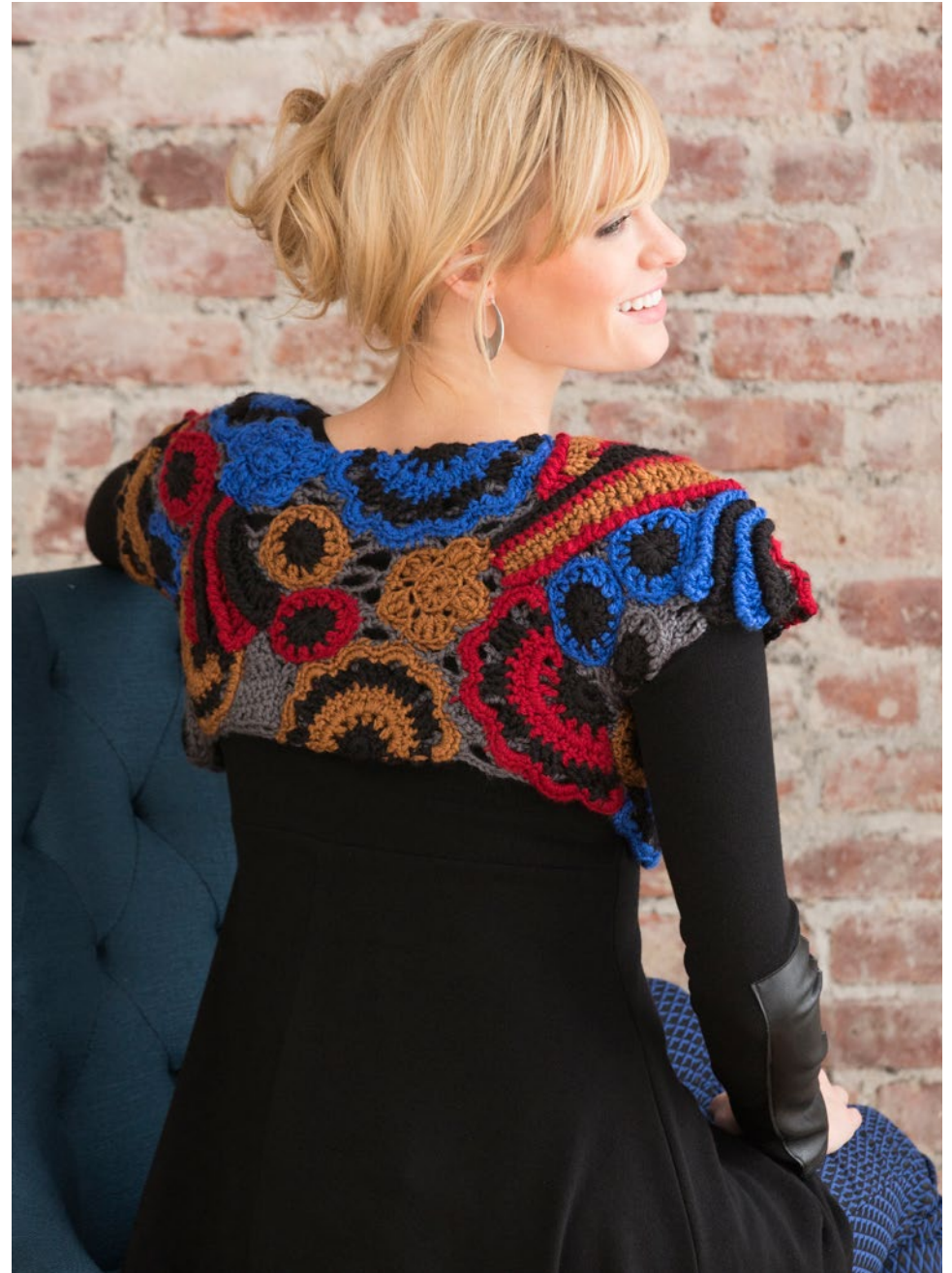
See next page for alternate photos



Please Note: Print this pattern using Landscape Orientation.

Find more ideas & inspiration: [redheart.com](http://redheart.com)

©2015 Coats & Clark



Please Note: Print this pattern using Landscape Orientation.

Find more ideas & inspiration: [redheart.com](http://redheart.com)

©2015 Coats & Clark