



Nicole Winer
Designer



KNIT | SKILL LEVEL: INTERMEDIATE

ABBREVIATIONS

Alt = Alternate
Beg = Begin(ning)
Cont = Continue
Dec = Decrease(ing)
Inc = Increase(ing)
K = Knit
K1tbl = Knit next stitch through back loop
K2tog = Knit next 2 stitches together
P = Purl
P1tbl = Purl next stitch through

back loop
Pat = Pattern
Rem = Remain(ing)(s)
Rep = Repeat
RS = Right side
Ssk = Slip next 2 stitches knitwise one at a time. Pass them back onto left-hand needle, then knit through back loops together
St(s) = Stitch(es)
WS = Wrong side

SIZES

To fit chest measurement

XS/S 28-34" [71-86.5 cm]
M 36-38" [91.5-96.5 cm]
L 40-42" [101.5-106.5 cm]
XL 44-46" [112-117 cm]
2/3XL 48-54" [122-137 cm]
4/5XL 56-62" [142-157.5 cm]

Finished bust

XS/S 40" [101.5 cm]
M 44" [112 cm]
L 46½" [118 cm]
XL 53" [134.5 cm]
2/3XL 59½" [151 cm]
4/5XL 66" [167.5 cm]



MATERIALS

Patons® Classic Wool™ Roving (3.5 oz/100 g; 120 yds/109 m)

Sizes	XS/S	M	L	XL	2/3XL	4/5XL	
Natural (77010)	8	8	9	9	10	11	balls

Size U.S. 10 (6 mm) circular knitting needle 29" [75 cm] long **or size needed to obtain gauge.** Spare needle. 5 buttons - 1½" [4 cm] diameter.

GAUGE

15 sts and 20 rows = 4" [10 cm] in stocking st.

INSTRUCTIONS

The instructions are written for smallest size. If changes are necessary for larger sizes the instructions will be written thus (). Numbers for each size are shown in the same color throughout the pattern. When only one number is given in black, it applies to all sizes.

Note: Cardigan is worked in one piece to armholes, then it is divided to work front and back armhole shaping.

BODY

Cast on **151** (**163-175-199-223-247**) sts. **Do not** join. Working back and forth across needle in rows, proceed as follows:

1st row: (RS). K1. P2. *K1tbl. P2. Rep from * to last st. K1.

2nd row: P1. K2. *P1tbl. K2. Rep from * to last st. P1.

Rep last 2 rows of (K1tbl. P2) ribbing for 3" [7.5 cm], ending on a WS row.

Proceed in pat as follows (see Chart on page 5):

1st row: (RS). *K7. P2. K1. P2. Rep from * to last 7 sts. K7.

2nd row: *P7. K2. P1. K2. Rep from * to last 7 sts. P7.

3rd row: K6. P2. K1. P1. K1. P2. K2. *K3. P2. K1. P1. K1. P2. K2. Rep from * to last 4 sts. K4.

4th row: P6. K2. P1. K1. P1. K2. P3. *P2. K2. P1. K1. P1. K2. P3. Rep from * to last 3 sts. P3.

5th row: K5. P2. (K1. P1) 3 times. P1. K1. *K2. P2. (K1. P1) 3 times. P1. K1. Rep from * to last 4 sts. K4.

6th row: P5. K2. (K1. P1.) 3 times. K1. P2. *P1. K2. (K1. P1) 3 times. K1. P2. Rep from * to last 3 sts. P3.

7th row: K4. P2. (K1. P1) 4 times. P1. *K1. P2. (K1. P1) 4 times. P1. Rep from * to last 4 sts. K4.

8th row: P4. K2. (P1. K1) 4 times. K1. P1. *K2. (P1. K1) 4 times. K1. P1. Rep from * to last 3 sts. P3.

9th row: K3. *P2. (K1. P1) 5 times. Rep from * to last 4 sts. P1. K3.

10th row: P3. *K2. (P1. K1) 5 times. K1. Rep from * to last 4 sts. K1. P3.

11th row: K3. *P2. K2. (P1. K1) 3 times. K1. P1. Rep from * to last 4 sts. P1. K3.

12th row: P3. K1. *K1. P2. (K1. P1) 3 times. P1. K2. Rep from * to last 3 sts. P3.

13th row: K3. *P2. K3. P1. K1. P1. K3. P1. Rep from * to last 4 sts. P1. K3.

14th row: P3. K1. *K1. P3. K1. P1. K1. P3. K2. Rep from * to last 3 sts. P3.

15th row: K3. *P2. K4. P1. K4. P1. Rep from * to last 4 sts. P1. K3.

16th row: P3. K1. *K1. P4. K2. Rep from * to last 3 sts. P3.

17th row: K4. P2. K7. P2. *K1. P2. K7. P2. Rep from * to last 4 sts. K4.

18th row: P4. K2. P7. K2. P1. *K2. P7. K2. P1. Rep from * to last 3 sts. P3.

19th row: K5. P2. K5. P2. K1. *P1. K1. P2. K5. P2. K1. Rep from * to last 4 sts. K4.

20th row: P5. K2. P5. K2. P1. K1. *P1. K2. P5. K2. P1. K1. Rep from * to last 15 sts. P1. K2. P5. K2. P5.

21st row: K6. P2. K3. P2. K1. P1. *K1. P1. K1. P2. K3. P2. K1. P1. Rep from * to last 16 sts. K1. P1. K1. P2. K3. P2. K6.

22nd row: P6. K2. P3. K2. P1. K1. P1. *K1. P1. K2. P3. K2. P1. K1. P1. Rep from * to last 15 sts. K1. P1. K2. P3. K2. P6.

23rd row: K7. P2. K1. P2. K1. P1. K1. *(P1. K1) twice. P2. K1. P2. K1. P1. K1. Rep from * to last 16 sts. (P1. K1) twice. P2. K1. P2. K7.

24th row: P7. K2. P1. K2. (P1. K1) twice. *P1. K1. P1. K2. P1. K2. (P1. K1) twice. Rep from * to last 15 sts. (P1. K1) twice. K1. P1. K2. P7.

25th row: K8. P3. (K1. P1) twice. *(K1.

P1) 3 times. P2. (K1. P1) twice. Rep from * to last 16 sts. (K1. P1) 3 times. P2. K8.

26th row: P8. K3. (P1. K1) twice. P1. *(K1. P1) twice. K3. (P1. K1) twice. P1. Rep from * to last 15 sts. (K1. P1) twice. K3. P8.

27th row: K9. P2. K2. P1. K1. *(P1. K1) twice. K1. P3. K2. P1. K1. Rep from * to last 16 sts. (P1. K1) twice. K1. P2. K9.

28th row: P9. K2. P2. K1. P1. K1. *P1. K1. P2. K3. P2. K1. P1. K1. Rep from * to last 15 sts. P1. K1. P2. K2. P9.

29th row: K9. P2. K3. P1. *K1. P1. K3. P3. K3. P1. Rep from * to last 16 sts. K1. P1. K3. P2. K9.

30th row: P9. K2. P3. K1. P1. *K1. P3. K3. P3. K1. P1. Rep from * to last 15 sts. K1. P3. K2. P9.

31st row: K9. P2. K4. *P1. K4. P3. K4. Rep from * to last 16 sts. P1. K4. P2. K9.

32nd row: P9. K2. P4. K1. *P4. K3. P4. K1. Rep from * to last 15 sts. P4. K2. P9.

33rd row: K10. P2. K3. *K4. P2. K1. P2. K3. Rep from * to last 16 sts. K4. P2. K10.

34th row: P10. K2. P4. *P3. K2. P1. K2. P4. Rep from * to last 15 sts. P3. K2. P10.

35th row: K11. P2. K2. *(K3. P2) twice. K2. Rep from * to last 16 sts. K3. P2. K11.

36th row: P11. K2. P3. *P2. (K2. P3) twice. Rep from * to last 15 sts. P2. K2. P11.

37th row: K12. P2. K1. *K2. P2. K5. P2. K1. Rep from * to last 16 sts. K2. P2. K12.

38th row: P12. K2. P2. *P1. K2. P5. K2. P2. Rep from * to last 15 sts. P1. K2. P12.

39th row: K13. P2. *K1. P2. K7. P2. Rep from * to last 16 sts. K1. P2. K13.

40th row: P13. K2. P1. *K2. P7. K2. P1. Rep from * to last 15 sts. K2. P13.

41st row: K14. P1. *P2. K9. P1. Rep from * to last 16 sts. P2. K14.

42nd row: P14. K2. *K1. P9. K2. Rep from * to last 15 sts. K1. P14.

43rd row: K15. *P1. K11. Rep from * to last 16 sts. P1. K15.

44th row: P15. K1. *P11. K1. Rep from * to last 15 sts. P15.

Chart is now complete.

Beg on a knit row, work even in stocking st until piece from beg measures **14 (14-15-15-16-16)" [35.5 (35.5-38-38-40.5-40.5) cm]**, ending on a WS row.

Divide for Right Front: Next row: **K35 (38-41-47-53-59)**. **Turn.** Leave rem sts on spare needle.

Shape armhole and front neck:

1st row: (WS). Cast off **8 (8-8-10-10-10)** sts. Purl to end of row. **27 (30-33-37-43-49)** sts.

Sizes 2/3XL and 4/5XL only:

Next row: Knit.

Next row: Cast off **(8-10)** sts. Purl to end of row. **(35-39)** sts.

All sizes: 1st row: (RS). K1. ssk. Knit to last 3 sts. K2tog. K1.

2nd row: Purl.

3rd row: Knit to last 3 sts. K2tog. K1.

4th row: Purl.

Rep last 4 rows, dec 1 st every alt row at armhole edge and every 4th row at both armhole and neck edge until there are **18 (22-21-23-24-27)** sts, then dec 1 st at neck edge only on every following 4th row until there are **12 (16-16-18-18-20)** sts.

Cont even until armhole measures **8 (8-8½-9-9-10½)" [20.5 (20.5-23-24-25.5-26.5) cm]**, ending on a knit row.

Shape shoulder: Cast off **6 (8-8-9-9-10)** sts at beg of next and following alt row.

Back: With RS facing, join yarn to next unworked st.

Shape armholes: Cast off **8 (8-8-10-10-10)** sts. **K73 (79-85-95-107-119)**. Including st on needle after cast-off. **Turn.** Leave rem sts on spare needle.

Next row: Cast off **8 (8-8-10-10-10)** sts. Purl to end of row. **65 (71-77-85-97-109)** sts.

Sizes 2/3XL and 4/5XL only:

Next row: Cast off **(8-10)** sts. Knit to end of row.

Next row: Cast off **(8-10)** sts. Purl to end of row. **(89-99)** sts.

All sizes: Next row: (RS). K1. ssk. Knit to last 3 sts. K2tog. K1.

Next row: Purl.

Rep last 2 rows **5 (4-7-8-6-7)** times more. **53 (61-61-67-67-73)** sts.

Cont even until armholes measure same length as Right Front before shoulder shaping, ending on a WS row.

Shape shoulders: Cast off **6 (8-8-9-9-10)** sts at beg of next 4 rows. Cast off rem **29 (29-31-31-33-33)** sts.

Left Front: With RS facing, join yarn to next unworked st.

Shape armhole and neck: Next row: Cast off **8 (8-8-10-10-10)** sts. Knit to end of row. **27 (30-33-37-43-49)** sts.

Sizes 2/3XL and 4/5XL only:

Next row: (WS). Purl.

Next row: Cast off **(8-10)** sts. Knit to end of row. **(35-39)** sts.

All sizes: 1st row: (WS). Purl.

2nd row: K1. ssk. Knit to last 3 sts. K2tog. K1.

3rd row: Purl.

4th row: Knit to last 3 sts. K2tog. K1. Rep last 4 rows, dec 1 st every alt row at armhole edge and every 4th row at both armhole and neck edge until there are **18 (22-21-23-24-27)** sts, then at neck edge only on every following 4th row to **12 (16-16-18-18-20)** sts.

Cont even until armhole measures **8 (8-8½-9-9-10½)" [20.5 (20.5-23-24-25.5-26.5) cm]**, ending on a purl row.

Shape shoulder: Cast off 6 (8-8-9-9-10) sts at beg of next and following alt row.

SLEEVES

Cast on 37 (37-37-40-40-40) sts.

Do not join. Working back and forth across needle in rows, proceed as follows:

1st row: (RS). K1. P2. *K1tbl. P2. Rep from * to last st. K1.

2nd row: P1. K2. *P1tbl. K2. Rep from * to last st. P1.

Rep last 2 rows of (K1tbl. P2) ribbing for 2" [5 cm], ending on a WS row.

Beg on a knit row, work 2 rows stocking st.

Inc 1 st each end of next row and following 6th (4th-4th-4th-4th-4th) row until there are 43 (41-45-58-64-68) sts, then every following 8th (6th-6th-6th-6th-6th) row until there are 55 (59-61-68-70-72) sts.

Cont even in stocking st until work from beg measures 18 (18-18-18-16-16)" [45.5 (45.5-45.5-45.5-40.5-40.5) cm], ending on a purl row.

Shape top: Cast off 8 (8-8-10-10-10) sts beg next 2 rows. 39 (43-45-48-50-52) sts.

1st row: (RS). K1. ssk. Knit to last 3 sts. K2tog. K1.

2nd row: Purl.

Rep last 2 rows until there are 11 (13-13-16-16-18) sts.

Cast off.

FINISHING

Sew shoulder seams.

Button and Buttonhole Band:

Cast on 11 sts.

1st row: (RS). K1. (K1tbl. P1) 4 times. K1tbl. K1.

2nd row: K1. (P1tbl. K1) 5 times.

Rep last 2 rows until Band, when slightly stretched, measures length to fit up Left Front, sewing in place as you knit.

Place markers on band for 5 buttons, having bottom button 1" [2.5 cm] above cast on edge, top button ½" [1.5 cm] below first front neckline dec and rem 3 buttons spaced evenly between.

Cont in ribbing to fit up neck edge and down opposite neck edge to first button marker, ending on a WS row.

Make buttonholes as follows:

1st row: (RS). Rib across 5 sts. Cast off 3 sts. Rib 3 sts.

2nd row: Rib, casting on 3 sts over cast off sts.

Cont in ribbing to end of Right Front, making a buttonhole at each button marker. Cast off in ribbing.

Sew Sleeve seams. Sew in Sleeves. Sew buttons to correspond to buttonholes.

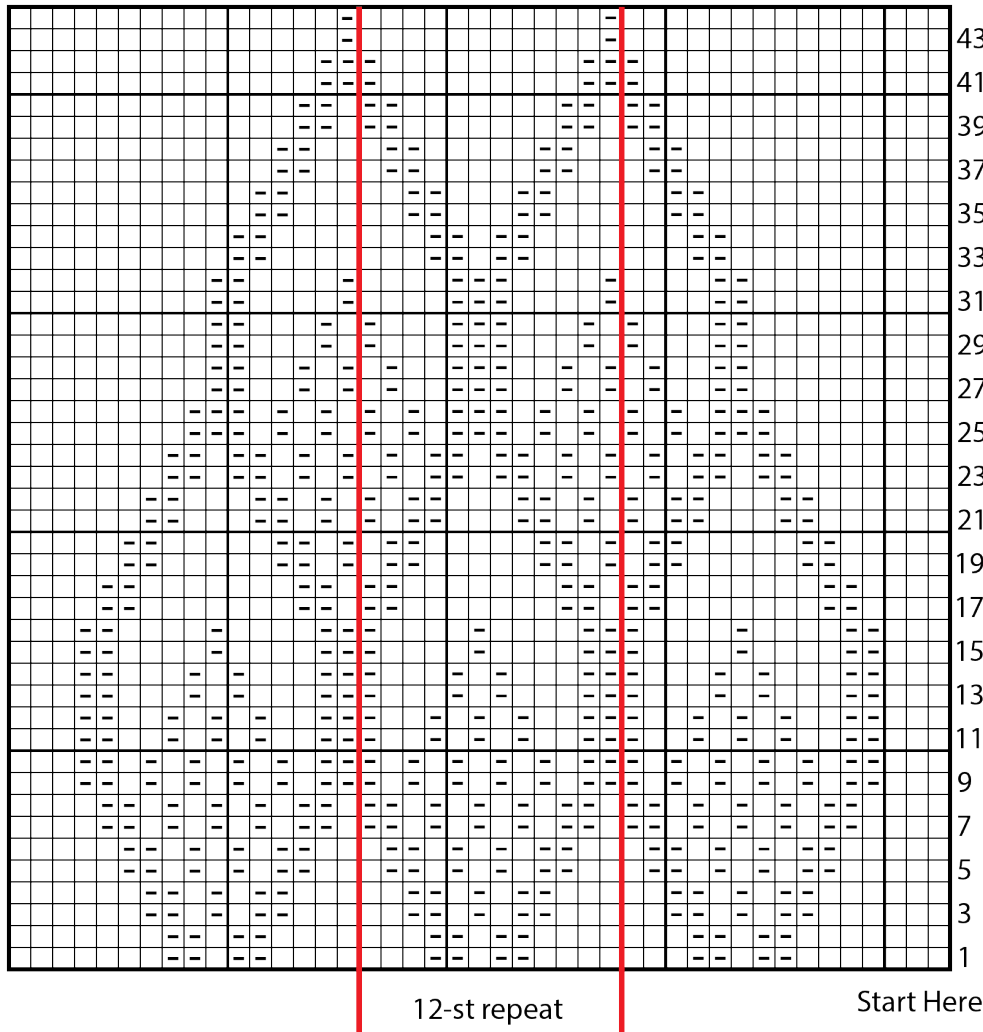


Front



Back

Chart



Key

- ☒ = Purl on RS rows. Knit on WS rows.
- ☐ = Knit on RS rows. Purl on WS rows.

