



KNIT | SKILL LEVEL: INTERMEDIATE

ABBREVIATIONS

Approx = Approximately

Beg = Begin(ning)(s)

K = Knit

P = Purl

Pat = Pattern

Rep = Repeat

RS = Right side

Sl1Pwyib = Slip next stitch purlwise with yarn in back of work

Sl1Pwyif = Slip next stitch purlwise with yarn in front of work

St(s) = Stitch(es)

Tog = Together

WS = Wrong side

MEASUREMENTS

Approx 55" x 58" [139.5 x 147.5 cm], excluding fringe.

GAUGE

8 sts and 17 rows = 4" [10 cm] in Mosaic Diamonds Pat

INSTRUCTIONS

Notes:

- Worked over multiple of 12 sts +3.
- Carry yarn when not in use loosely up side of work, taking new color from behind old color, being careful not to twist strands, when changing yarns at beg of row.

- When carrying yarn behind/in front of slipped sts, be sure yarn is loose enough to maintain gauge and prevent work from puckering.

With MC, cast on 111 sts. **Do not** join. Working back and forth across needle in rows, proceed as follows:

1st row: (WS). Knit.

2nd row: Knit.

3rd row: Purl. Join A.



MATERIALS

Bernat® Blanket™ (10.5 oz/300 g; 220 yds/201 m)

Main Color (MC) Lapis (10800) **3 balls or 571 yds/522 m**

Contrast A Burnt Mustard (10874) **2 balls or 433 yds/396 m**

Size U.S. 11 (8 mm) circular knitting needle 36" [91.5 cm] long **or size needed to obtain gauge.**

Proceed in Mosaic Diamonds Pat (see Chart) as follows:

1st row: With A, K1. *K4. (Sl1Pwyib. K3) twice. Rep from * to last 2 sts. K2.

2nd row: K1. P1. *(P3. Sl1Pwyif) twice. P4. Rep from * to last st. K1.

3rd row: With MC, K1. *K1. Sl1Pwyib. K3. Sl1Pwyib. Rep from * to last 2 sts. K2.

4th row: K1. P1. *Sl1Pwyif. P3. Sl1Pwyif. P1. Rep from * to last st. K1.

5th row: With A, K1. *K2. (Sl1Pwyib. K3) twice. Sl1Pwyib. K1. Rep from * to last 2 sts. K2.

6th row: K1. P1. *P1. (Sl1Pwyif. P3) twice. Sl1Pwyif. P2. Rep from * to last st. K1.

7th row: With MC, K1. *K3. Sl1Pwyib. K5. Sl1Pwyib. K2. Rep from * to last 2 sts. K2.

8th row: K1. P1. *P2. Sl1Pwyif. P5. Sl1Pwyif. P3. Rep from * to last st. K1.

9th row: With A, K1. *Sl1Pwyib. K3. Sl1Pwyib twice. K1. Sl1Pwyib twice. K3. Rep from * to last 2 sts. Sl1Pwyib. K1.

10th row: K1. Sl1Pwyif. *P3. Sl1Pwyif twice. P1. Sl1Pwyif twice. P3. Sl1Pwyif. Rep from * to last st. K1.

11th row: With MC, K1. *K1. Sl1Pwyib. K9. Sl1Pwyib. Rep from * to last 2 sts. K2.

12th row: K1. P1. *Sl1Pwyif. P9. Sl1Pwyif. P1. Rep from * to last st. K1.

13th row: With A, K1. *Sl1Pwyib. K3. Sl1Pwyib twice. K1. Sl1Pwyib twice. K3. Rep from * to last 2 sts. Sl1Pwyib. K1.

14th row: K1. Sl1Pwyif. *P3. Sl1Pwyif twice. P1. Sl1Pwyif twice. P3. Sl1Pwyif. Rep from * to last st. K1.

15th row: With MC, K1. *K3. Sl1Pwyib. K5. Sl1Pwyib. K2. Rep from * to last 2 sts. K2.

16th row: K1. P1. *P2. Sl1Pwyif. P5. Sl1Pwyif. P3. Rep from * to last st. K1.

17th row: With A, K1. *K2. Sl1Pwyib. (K3. Sl1Pwyib) twice. K1. Rep from * to last 2 sts. K2.

18th row: K1. P1. *P1. (Sl1Pwyif. P3) twice. Sl1Pwyif. P2. Rep from * to last st. K1.

19th row: With MC, K1. *K1. Sl1Pwyib. K3. Sl1Pwyib. Rep from * to last 2 sts. K2.

20th row: K1. P1. *Sl1Pwyif. P3. Sl1Pwyif. P1. Rep from * to last st. K1.

21st row: With A, K1. *K4. (Sl1Pwyib. K3) twice. Rep from * to last 2 sts. K2.

22nd row: K1. P1. *(P3. Sl1Pwyif) twice. P4. Rep from * to last st. K1.

23rd row: (RS). With MC, K1. *K3. Sl1Pwyib. K5. Sl1Pwyib. K2. Rep from * to last 2 sts. K2.

24th row: K1. P1. *P2. Sl1Pwyif. P5. Sl1Pwyif. P3. Rep from * to last st. K1. Join A.

Next row: With MC, knit.

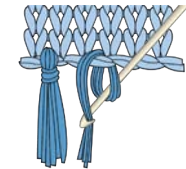
Next row: Purl.

Next row: Purl.

Cast off.

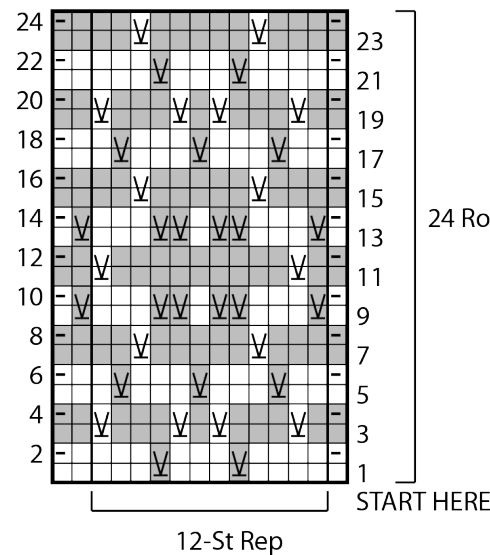
FINISHING

Fringe: Cut strands of MC 12" [30.5 cm] long. Taking 2 strands tog, fold in half and knot into fringe in every other st across top and bottom edges of Blanket. Trim fringe evenly.



Rep 1st to 24th rows of Mosaic Diamond Pat until work from beg measures approx 57" [144.5 cm] ending on a 22nd row.

Mosaic Diamonds Pat



KEY

- = With MC, knit on RS rows. Purl on WS rows.
- = With A, knit on RS rows. Purl on WS rows.
- = With MC, knit on WS rows.
- = With A, knit on WS rows.
- = With MC, Sl1Pwyib on RS rows. Sl1Pwyif on WS rows.
- = With A, Sl1Pwyib on RS rows. Sl1Pwyif on WS rows.