

# Patons® Classic Wool

## Patons® DECOR



**FAIR ISLE BORDER CARDIGAN**

### MATERIALS

**Patons Decor** (100 g/3.5 oz) or  
**Patons Classic Wool** (100 g/3.5 oz)

Size	M	L	
<b>Main Color (MC)</b> (Blue)	6	7	balls
<b>Contrast A</b> (Dk Green)	1	1	ball
<b>Contrast B</b> (Lt Green)	1	1	ball

Sizes 4 mm (U.S. 6) and 4.5 mm (U.S. 7) knitting needles. Size 4 mm (U.S. 6) circular needle 36 ins [90 cm] long **or size needed to obtain tension**. Cable needle. 1 st holder. 5 buttons.

### ABBREVIATIONS

**C4F** = slip next 2 sts onto a cable needle and leave at front of work. K2, then K2 from cable needle.

**C4B** = slip next 2 sts onto a cable needle and leave at back of work. K2, then K2 from cable needle.

### INSTRUCTIONS

*The instructions are written for smaller size. If changes are necessary for larger size the instructions will be written thus ( ).*

**Note:** When working from chart, carry yarn not in use loosely across WS of work but never over more than 5 sts. When it must pass over more than 5 sts, weave it over and under color in use on next st or at centre point of sts it passes over. The colors are never twisted around one another.

### BACK

With MC and smaller needles cast on 105 (121) sts.

Knit 4 rows (garter st) noting that first row is **WS**.

**Next row:** (WS). Knit, inc 6 sts evenly across. 111 (127) sts.

Change to larger needles and work Chart I in stocking st to end of chart reading **knit** rows from **right** to left and **purl** rows from **left** to right.

**Next row:** (WS). With MC, purl inc 16 (17) sts evenly across. 127 (144) sts.

Proceed in pat as follows:

**1st row:** (RS). K3. C4F. \*K3. K2tog. yfwd. K1. yfwd. S1K. K1. pssso. K5. C4F. Rep from \* to last st. K1.

**2nd and alt rows:** Purl.

**3rd row:** K1. C4B. \*K4. K2tog. (K1. yfwd) twice. K1. S1K. K1. pssso. K2. C4B. Rep from \* to last 3 sts. K3.

**5th row:** K3. C4F. \*K1. K2tog. K2. yfwd. K1. yfwd. K2. S1K. K1. pssso. K3. C4F. Rep from \* to last st. K1.

**7th row:** K1. C4B. \*K2. K2tog. K3. yfwd. K1. yfwd. K3. S1K. K1. pssso. C4B. Rep from \* to last 3 sts. K3.

**8th row:** Purl.

These 8 rows form Lace and Cable Pat. Cont in pat until work from beg measures 12½ (13) ins [32 (33) cm], ending with RS facing for next row.

**Armhole shaping:** Cast off 9 (11) sts beg next 2 rows.

Keeping cont of pat, dec 1 st each end of needle on next and following alt rows until there are 99 (108) sts.

Cont even in pat until armhole measures 9 (9½) ins [23 (24) cm], ending with RS facing for next row.

**Shoulder shaping:** Cast off 14 (15) sts beg next 2 rows, then 14 (16) sts beg following 2 rows. Leave rem 43 (46) sts on a st holder.

### SIZES

#### Bust measurement

<b>Medium</b>	34-36 ins	[86-91 cm]
<b>Large</b>	38-40 ins	[97-102 cm]

#### Finished bust

<b>Medium</b>	42 ins	[107 cm]
<b>Large</b>	48 ins	[122 cm]

### TENSION

24 sts and 26 rows = 4 ins [10 cm] with larger needles in Lace and Cable Pat.



ABBREVIATIONS: [www.patonsyarns.com/glossary](http://www.patonsyarns.com/glossary)

## LEFT FRONT

\*\*With MC and smaller needles cast on 52 (60) sts.

Knit 4 rows (garter st) noting that first row is **WS**.

**Next row:** (WS). Knit, inc 3 sts evenly across. 55 (63) sts.

Change to larger needles and work Chart I in stocking st to end of chart reading **knit** rows from **right** to left and **purl** rows from **left** to right.

**Next row:** (WS). With MC, purl inc 7 sts evenly across. 62 (70) sts.\*\*

Proceed in pat as follows:

**1st row:** (RS). K3. C4F. \*K3. K2tog. yfwd. K1. yfwd. Sl1K. K1. pssso. K5. C4F. Rep from \* to last 4 (12) sts. K4 (3). (K2tog. yfwd. K1. yfwd. Sl1K. K1. pssso. K4) 0 (1) time.

**2nd and alt rows:** Purl.

**3rd row:** K1. C4B. \*K4. K2tog. K1. yfwd. K1. yfwd. K1. Sl1K. K1. pssso. K2. C4B. Rep from \* to last 6 (14) sts. K6 (4). [K2tog. (K1. yfwd) twice. Sl1K. K1. pssso. K4] 0 (1) time.

**5th row:** K3. C4F. \*K1. K2tog. K2. yfwd. K1. yfwd. K2. Sl1K. K1. pssso. K3. C4F. Rep from \* to last 4 (12) sts. K4 (1). (K2tog. K2. yfwd. K1. yfwd. K2. Sl1K. K1. pssso. K2) 0 (1) time.

**7th row:** K1. C4B. \*K2. K2tog. K3. yfwd. K1. yfwd. K3. Sl1K. K1. pssso. C4B. Rep from \* to last 6 (14) sts. K6 (2). (K2tog. K3. yfwd. K1. yfwd. K3. Sl1K. K1. pssso. K1) 0 (1) time.

**8th row:** Purl.

These 8 rows form Lace and Cable Pat.

Cont in pat until work from beg measures 12½ (13) ins [32 (33) cm], ending with RS facing for next row.

**Armhole shaping:** Cast off 9 (11) sts beg next row.

Work 1 row even in pat.

Keeping cont of pat, dec 1 st at beg of next and following alt row. 51 (57) sts.

**Shape front: Next row:** Work 2tog. Pat to last 2 sts. Work 2tog (front edge). Work 1 row even in pat. Rep last 2 rows 2 (4) times more. 45 (47) sts.

Keeping cont of pat, dec 1 st at front edge only on next and following alt rows until there are 31 (35) sts, then every following 4th row until there are 28 (31) sts.

Cont even in pat until armhole measures 9 (9½) ins [23 (24) cm], ending with RS facing for next row.

**Shoulder shaping:** Cast off 14 (15) sts beg next row.

Work 1 row even in pat. Cast off rem 14 (16) sts.

## RIGHT FRONT

Work from \*\* to \*\* as given for Left Front.

Proceed in pat as follows:

**1st row:** (RS). [K4 . K2tog. yfwd. K1. yfwd. Sl1K. K1. pssso] 0 (1) time. K6 (5). \*C4F. K3. K2tog. yfwd. K1. yfwd. Sl1K. K1. pssso. K5. Rep from \* to last 5 sts. C4F. K1.

**2nd and alt rows:** Purl.

**3rd row:** [K3. K2tog. K1. (yfwd. K1) twice. Sl1K. K1. pssso.] 0 (1) time. K4 (2). \*C4B. K4. K2tog. (K1. yfwd) twice. K1. Sl1K. K1. pssso. K2. Rep from \* to last 7 sts. C4B. K3.

**5th row:** [K2. K2tog. K2. yfwd. K1. yfwd. K2. Sl1K. K1. pssso.] 0 (1) time. K6 (3). \*C4F. K1. K2tog. K2. yfwd. K1. yfwd. K2. Sl1K. K1. pssso. K3. Rep from \* to last 5 sts. C4F. K1.

**7th row:** [K1. K2tog. K3. yfwd. K1. yfwd. K3. Sl1K. K1. pssso.] 0 (1) time. K4(0). \*C4B. K2. K2tog. K3. yfwd. K1. yfwd. K3. Sl1K. K1. pssso. Rep from \* to last 7 sts. C4B. K3.

**8th row:** Purl.

These 8 rows form Lace and Cable Pat.

Cont in pat until work from beg measures 12½ (13) ins [32 (33) cm] ending with **WS** facing for next row.

**Armhole shaping:** Cast off 9 (11) sts beg next row.

Keeping cont of pat, dec 1 st at end of next and following alt row. 51 (57) sts.

**Shape front: Next row:** Work 2tog (front edge). Pat to last 2 sts. Work 2tog. Work 1 row even in pat.

Rep last 2 rows 2 (4) times more. 45 (47) sts.

Keeping cont of pat, dec 1 st at front edge only on next and following alt rows until there are 31 (35) sts, then every following 4th row until there are 28 (31) sts.

Cont even in pat until armhole measures 9 (9½) ins [23 (24) cm] ending with **WS** facing for next row.

**Shoulder shaping:** Cast off 14 (15) sts beg next row.

Work 1 row even in pat. Cast off rem 14 (16) sts].

## SLEEVES

With MC and smaller needles cast on 49 sts. Knit 4 rows, noting that first row is **WS**

**Next row:** (WS). Knit, inc 4 sts evenly across. 53 sts.

Change to larger needles and work Chart I in stocking st to end of chart reading **knit** rows from **right** to left and **purl** rows from **left** to right, noting side incs on 5th and following alt rows. 67 sts.

**Next row:** (WS). With MC, purl inc 9 sts evenly across. 76 sts.

Proceed in Lace and Cable Pat as given for Back, inc 1 st each end of needle on 3rd and following 4th rows until there are 88 (100) sts, then every following 6th row until there are 108 (114) sts, taking inc sts into pat.

Cont even in pat until work from beg measures 18 (18½) ins [46 (47) cm], ending with RS facing for next row.

**Shape top:** Keeping cont of pat, cast off 6 sts beg next 12 (14) rows, then 8 (5) sts beg following 2 rows. Cast off rem 20 sts.

## FINISHING

Pin garment pieces to measurements. Cover with a damp cloth leaving to dry.

**Button and Buttonhole Band:** Sew shoulder seams. With RS of work facing, MC and circular needle, pick up and knit 65 (69) sts up Right Front edge to first front dec and 43 (46) sts up Right Front neck edge. Knit across 43 (46) sts from Back neck st holder dec 6 sts evenly across. Pick up and knit 43 (46) sts down Left Front neck edge to first front dec and 65 (69) sts down Left Front edge to cast on edge. 253 (270) sts. **Do not join.**

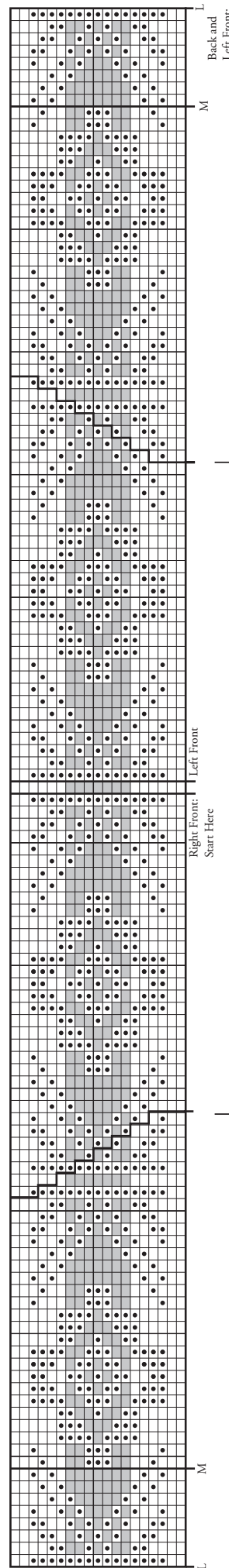
Working back and forth across needle in rows, proceed as follows:  
Knit 3 rows (garter st).

**Next row:** (RS). K3. \*Cast off 2 sts. K13 (14) (including st on needle after cast off). Rep from \* 3 times more. Cast off 2 sts. Knit to end of row. 5 buttonholes.

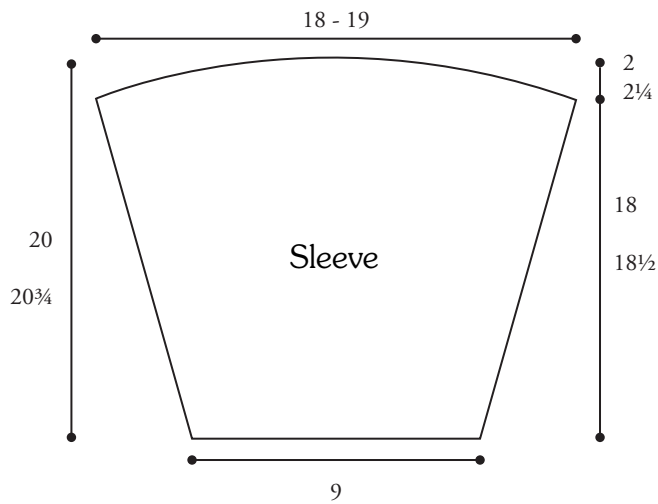
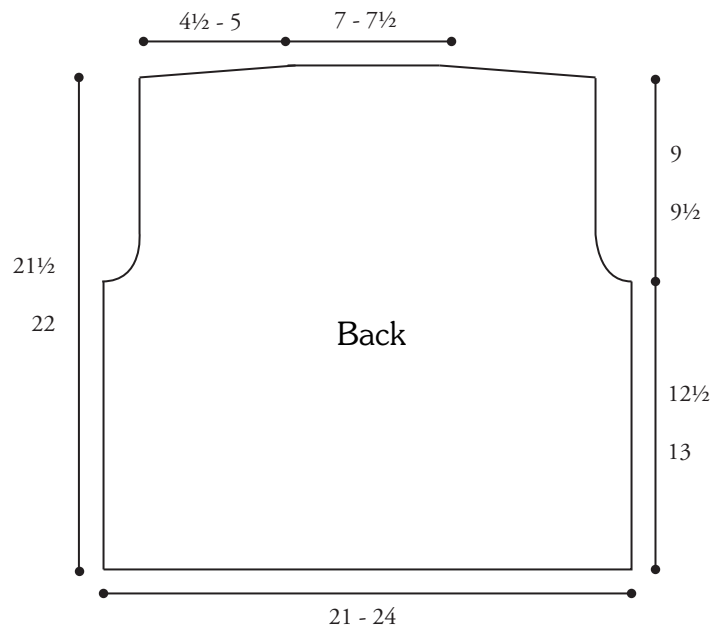
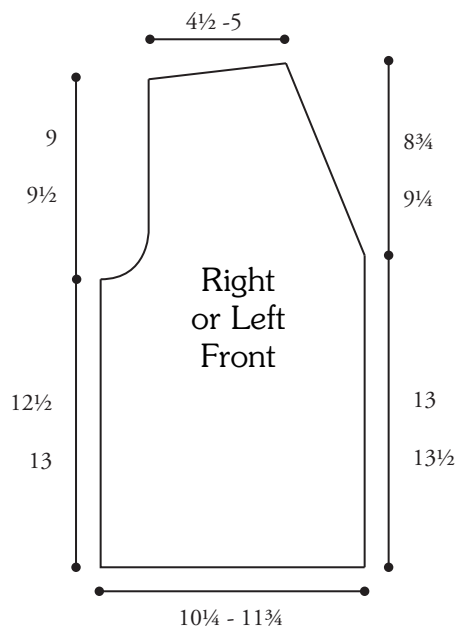
**Next row:** Knit, casting on 2 sts over cast off sts.

Knit 1 row. Cast off knitways (WS).  
Sew in Sleeves. Sew side and sleeve seams.  
Sew buttons to correspond to buttonholes.

## CHART I



Key  
 ■ = MC  
 □ = Contrast A  
 ■● = Contrast B



**Patons**

*... a part of your life.*

P.O. Box 40, Listowel ON N4W 3H3