



MATERIALS

Patons® Lace Sequin™ (2.5 oz/70 g; 344 yds/314 m)
Smoky Quartz (37046) **4 balls**

Size U.S. E/4 (3.5 mm) crochet hook **or size needed to obtain gauge.**

ABBREVIATIONS:

Approx = Approximate(ly)
Beg = Begin(ning)
Ch = Chain(s)
Cont = Continue
Dc = Double crochet
Dtr = (Yoh) 3 times and draw up a loop in

indicated space. (Yoh and draw through 2 loops on hook) 4 times.
Hdc = Half double crochet
Pat = Pattern
Rep = Repeat

Rnd(s) = Round(s)
RS = Right side
Sc = Single crochet
Sl st = Slip stitch
Sp(s) = Space(s)
Tr = Treble
WS = Wrong side
Yoh = Yarn over hook

 CROCHET | SKILL LEVEL: INTERMEDIATE

MEASUREMENTS

Approx 24" [61 cm] wide x 64" [162.5 cm] long.

GAUGE

24 sc and 26 rows = 4" [10 cm].

INSTRUCTIONS

See Diagram 1 on page 3.

Ch 131.

1st row: (WS). 1 sc in 6th ch from hook. (Counts as hdc, ch 1 and sc). *Ch 7. Skip next 5 ch. 1 sc in next ch. Ch 3. Skip next 2 ch. 1 sc in next ch. Rep from * to last 8 ch. Ch 7. Skip next 5 ch. 1 sc in next ch. Ch 1. Skip next ch. 1 hdc in last ch. Turn.

2nd row: Ch 1. 1 sc in first hdc. [(3 dc. Ch 1) twice. 3 dc] in first ch-7 sp. *1 sc in next ch-3 sp. [(3 dc. Ch 1) twice. 3 dc] in next ch-7 sp. Rep from * across, ending with 1 sc in 3rd ch of turning ch. Turn.

3rd row: Ch 9 (counts as dtr and ch 4). Skip first 3 dc and next ch-1 sp. 1 sc in each of next 3 dc. *Ch 4. 1 tr in next sc. Ch 4. Skip next 3 dc and next ch-1 sp. 1 sc in each of next 3 dc. Rep from * across, ending with ch 4. 1 dtr in last sc. Turn.

4th row: Ch 1. 1 sc in first dtr. *Ch 4. 2 dc in center sc of next 3 sc. Ch 4. *(1 sc. Ch 3. Sl st in same sp as last sc – picot made. 1 sc) all in next tr. Rep from * across, ending with ** 1 sc in 5th ch of turning ch. Turn.

5th row: Ch 7 (counts as dc and ch 4). 1 sc in first ch-4 sp (beside 2 dc). Ch 3. 1 sc in next ch-4 sp (beside 2 dc). *Ch 7. 1 sc in next ch-4 sp (beside 2 dc). Ch 3. 1 sc in next ch-4 sp (beside 2 dc). Rep from * across, ending with Ch 4. 1 dc in last sc. Turn.

6th row: Ch 3 (counts as dc). (1 dc. Ch 1. 3 dc) in first ch-4 sp. *1 sc in next ch-3 sp. [(3 dc. Ch 1) twice. 3 dc] in next ch-7 sp. Rep from * across, ending with 1 sc in last ch-3 sp. (3 dc. Ch 1. 2 dc) in last ch-4 sp of turning ch. Turn.

7th row: Ch 1. 1 sc in each of first 2 dc.*Ch 4. 1 tr in next sc. Ch 4. Skip next 3 dc and next ch-1 sp. 1 sc in each of next 3 dc. Rep from * across, ending with Ch 4. 1 tr in last sc. Ch 4. Skip next 3 dc and ch-1 sp. 1 sc in each of last 2 dc. Turn.

8th row: Ch 3 (counts as dc). 1 dc in first sc. *Ch 4. (1 sc. Picot. 1 sc) in next tr. Ch 4. 2 dc in center sc of next 3 sc. Rep from * across ending

with 2 dc in last sc. Turn.

9th row: Ch 3 (counts as hdc and ch 1). 1 sc in next ch-4 sp. *Ch 7. 1 sc in next ch-4 sp (beside 2 dc). Ch 3. 1 sc in next ch-4 sp (beside 2 dc). Rep from * across, ending with ch 7. 1 sc in next ch-4 sp (beside 2 dc). Ch 1. Skip next dc. 1 hdc in top of ch 3. Turn. Rep 2nd to 9th rows for pat until Shawl from beg measures approx 62" [157.5 cm], ending on a 3rd row of pat.

Next row: (RS). Ch 1. 1 sc in first dtr. *Ch 4. 2 dc in center sc of next 3 sc. Ch 4. 1 sc in next tr. Rep from * across, ending with 1 sc in 5th ch of turning ch.

Do not turn or fasten off. (See Diagram 2.)

Cont as follows for edging:

1st rnd: Work 249 sc evenly down side of Shawl. Work 3 sc in corner. Work 123 sc evenly across lower edge. Work 3 sc in corner. Work 249 sc evenly up side of Shawl. Work 3 sc in corner. Work 123 sc evenly across top edge. Work 3 sc in corner. Join with sl st to first sc.

2nd rnd: Ch 1. 1 sc in same sp as last sl st. *Ch 7. Skip next 5 sc. 1 sc in

next sc. Ch 3. Skip next 2 sc. 1 sc in next sc. * Rep from * to * down side, ending with ch 7. Skip next 5 sc.

1 sc in next sc. Ch 5. Skip next corner 3 sc. 1 sc in next sc. Rep from * to * across lower edge, ending with ch 7. Skip next 5 sc. 1 sc in next sc. Ch 5. Skip next corner 3 sc. 1 sc in next sc. Rep from * to * up side, ending with ch 7. Skip next 5 sc. 1 sc in next sc. Ch 5. Skip next corner 3 sc. 1 sc in next sc. Rep from * to * across top edge, ending with ch 7. Skip next 5 sc. 1 sc in next sc. Ch 2. Skip last corner 3 sc. Join with dc to first sc.

3rd rnd: *[(3 dc. Ch 1) twice. 3 dc] in next ch-7 sp. (1 sc. Picot. 1 sc) in next ch-3 sp. Rep from * around, working (1 sc. Picot. 1 sc) in each corner ch-5 sp. Join with sl st to first dc. Fasten off.

Diagram 1

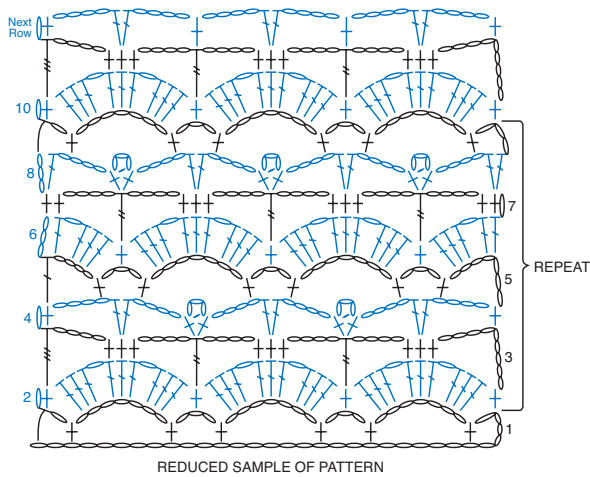
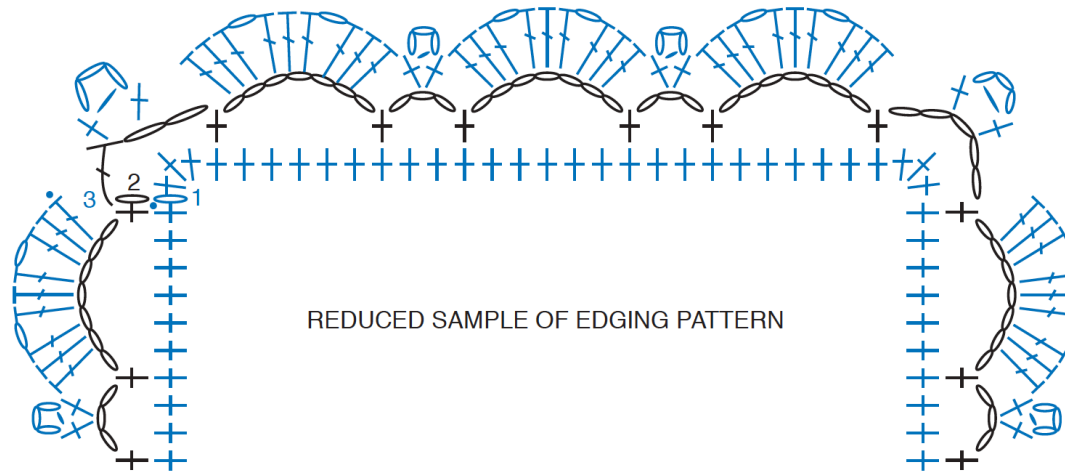


Diagram 2



Key

- = chain (ch)
- = slip st (sl st)
- † = single crochet (sc)
- ┆ = half double crochet (hdc)
- ┆ = double crochet (dc)
- ┆ = treble crochet (tr)
- ┆ = double treble crochet (dtr)
- ⦶ = picot