



MATERIALS

Bernat® Softee® Baby™ (5 oz/140 g; 362 yds/331 m)
Little Mouse (30010) **4 balls**

Size U.S. 6 (4 mm) circular knitting needle 24" [60 cm] long **or size needed to obtain gauge.** Cable needle. Stitch markers. 16 buttons.



KNIT | SKILL LEVEL: **INTERMEDIATE**

ABBREVIATIONS

Alt = Alternate(ing)

Approx = Approximately

Beg = Beginning

C4B = Slip next 2 stitches onto cable needle and leave at back of work. K2, then K2 from cable needle.

C4F = Slip next 2 stitches onto cable needle and leave at front of work. K2, then K2 from cable needle.

Cont = Continue(ity)

K = Knit

K2tog = Knit next 2 stitches together

P = Purl

Pat = Pattern

Rep = Repeat

RS = Right side

St(s) = Stitch(es)

WS = Wrong side

MEASUREMENTS

One size to fit baby 3-6 mos.
Approx 27" [68.5 cm] long (excluding hood) x 14" [35.5 cm] wide

GAUGE

21 sts and 40 rows = 4" [10 cm] in garter st.

INSTRUCTIONS

Note: Do not join. Work back and forth in rows across needle for all pieces.

BACK

Cast on 92 sts.
Knit 2 rows.

Beg working in Cable Pat: See chart on page 3.

1st row: (RS). K30. C4B. P2. K6. C4B. C4F. K6. P2. C4B. K30.

2nd and alt rows: K30. P4. K2. P20. K2. P4. K30.

3rd row: K34. P2. K4. C4B. K4. C4F. K4. P2. K34.

5th row: K30. C4B. P2. K2. C4B. K8. C4F. K2. P2. C4B. K30.

7th row: K34. P2. C4B. K12. C4F. P2. K34.

8th row: K30. P4. K2. P20. K2. P4. K30.

These 8 rows form Cable Pat.

Cont in Pat until work from beg measures approx 22" [56 cm], ending on a 3rd or 7th row.

Next row: (WS). K4. *K3. K2tog. Rep from * to last 8 sts. K8. 76 sts. Work in garter st (knit every row) until work from beg measures 27" [68.5 cm], ending on a WS row. Cast off.

RIGHT FRONT

**Cast on 56 sts.

Knit 2 rows.

Beg working in Cable Pat:
See chart on page 3.

1st row: (RS). K12. C4B. P2. K6. C4B. C4F. K6. P2. C4B. K12.

2nd and alt rows: K12. P4. K2. P20. K2. P4. K12.

3rd row: K16. P2. K4. C4B. K4. C4F. K4. P2. K16.

5th row: K12. C4B. P2. K2. C4B. K8. C4F. K2. P2. C4B. K12.

7th row: K16. P2. C4B. K12. C4F. P2. K16.

8th row: K12. P4. K2. P20. K2. P4. K12.

These 8 rows form Cable Pat.

Cont in pat until work from beg measures approx 22" [56 cm], ending on a 3rd or 7th row.**

Next row: (WS). *K2. K2tog. Rep from * to end of row. 42 sts.

Proceed in garter st (knit every row) until work from beg measures 25" [63.5 cm], ending on a WS row.

Shape neck: 1st row: (RS). Cast off 3 sts. Knit to end of row. 39 sts.

2nd row: Knit.

Rep these 2 rows 6 times more. 21 sts.

Cont in garter st until work measures same length as Back, ending on a WS row. Cast off.

LEFT FRONT

Work from ** to ** as given for Right Front.

Next row: (WS). *K2. K2tog. Rep from * to end of row. 42 sts.

Proceed in garter st (knit every row) until work from beg measures 25" [63.5 cm], ending on a RS row.

Shape neck: 1st row: (WS). Cast off 3 sts. Knit to end of row. 39 sts.

2nd row: Knit.

Rep these 2 rows 6 times more. 21 sts.

Cont in garter st until work measures same length as Back, ending on a WS row. Cast off.

SLEEVES

Cast on 42 sts.

Work in garter st (knit every row) until work from beg measures 6½" [16.5 cm]. Cast off.

HOOD

Sew shoulder seams.

With RS facing, pick up and knit 21 sts evenly up Right Front neck edge, 31 sts evenly across back neck edge (placing st marker on center back st) and 21 sts evenly down Left Front neck edge. 73 sts.

Work in garter st (knit every row) until Hood from pick up edge measures approx 8½" [21.5 cm] from pick up edge, ending on a WS row. Cast off. Fold cast off edge of Hood in half at marker and sew top Hood seam.

Button Band

With RS facing, pick up and knit 152 sts evenly up Right Front, 88 sts around Hood and 152 sts down Left Front. 392 sts.

1st to 5th rows: Knit.

Place 16 markers for buttons on Button band, having top button at beg of neck shaping, bottom button 1" [2.5 cm] up from cast on edge and rem 14 buttons spaced evenly between.

Work buttonholes to correspond to button markers on buttonhole band as follows:

6th row: (RS). *Knit to next marker. Cast off 2 sts. Rep from * 15 times more. Knit to end of row.

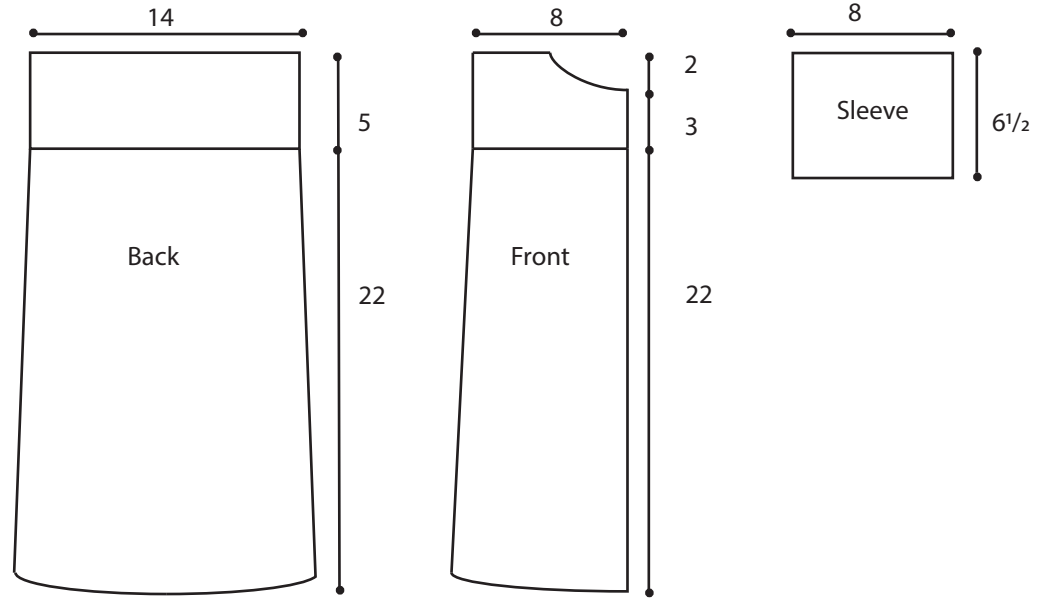
7th row: Knit, casting on 2 sts over cast off sts.

8th to 12th rows: Knit.

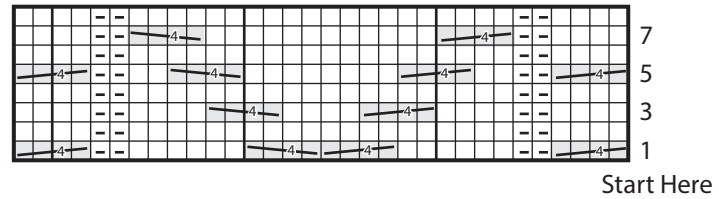
Cast off.

FINISHING



Place markers on side edges 4" [10 cm] down from shoulders. Sew in sleeves between markers. Sew side and sleeve seams. Sew buttons to correspond to buttonholes. Sew bottom seam, overlapping button band.



Cable Chart



Key

- = Knit on RS rows. Purl on WS rows.
- ◻ = Purl on RS rows. Knit on WS rows.
-  = C4B
-  = C4F