



Cabled & Collared Poncho

For cool days or to keep you warm when the thermostat is turned down low, knit this stylish poncho. This very wearable style is fashioned in a very soft, comfy yarn with a bit of sparkle.

Designed by Ann Regis.

Directions are for size Small/Medium. Changes for size Large/X-Large are in parentheses.

Finished Neck Circumference: 20 (22)''

Finished Length: 25 (28)'', measured from center front neck down to center front point.

RED HEART® Shimmer™: 4 (5) balls 1403 Pewter.

Knitting Needles: 8mm [US 11] straight needles, and 8mm [US 11] circular needle, 24'' long (for collar)
Stitch markers, cable needle, yarn needle.

GAUGE: 12 sts = 4''; 16 rows = 4'' in Stockinette st (knit on Right Side, purl on Wrong Side). **CHECK YOUR GAUGE.**
Use any size needles to obtain the gauge.

Special Stitches

M1 = Make 1 (Increase) – Lift strand between needles to left-hand needle and knit strand through the back loop, twisting it to prevent a hole.

4/4 RC = 4 over 4 Right Cross – Slip 4 sts to cable needle and hold to back, k4, then k4 sts from cable needle.

NOTES

1. Poncho is formed from two rectangles; front and back.
2. A 20 stitch cable pattern is worked over 20 stitches, between markers, on each rectangle. Stitches on both sides of the cable pattern are worked in a pattern of 3 rows St st (knit on Right Side, purl on Wrong Side) and 1 Wrong Side knit row.
3. The rectangles are sewn together according to assembly diagram to form the poncho.
4. Beginning of collar is worked in rounds around the top edge of the assembled poncho. Then collar is worked back and forth in rows to form front slit opening.
5. Poncho is worked holding 2 strands of yarn together throughout.

PONCHO

Front

With straight needles and 2 strands of yarn held together, cast on 58 (64) sts.

Row 1 (Wrong Side): K33 (36), place marker, k1, p6, k2, p6, k1, pm, k9 (12).

Row 2: K9 (12), slip marker, p1, k6, p2, k6, p1, slip marker, k33 (36).

Continue to slip markers as you come to them.

Row 3: P33 (36), k1, p6, k2, p6, k1, p9 (12).

Row 4: Repeat Row 2.

Row 5: K33 (36), k1, p6, k2, p6, k1, k9 (12).

Row 6: K9 (12), p1, [k2, M1] 2 times, k2, p2, [k2, M1] 2 times, k2, p1, k33 (36)—62 (68) sts.

Row 7: P33 (36), k1, p8, k2, p8, k1, p9 (12).

Row 8: K9 (12), p1, k8, p2, k8, p1, k33 (36).

Row 9: K33 (36), k1, p8, k2, p8, k1, k9 (12).

Begin Cable Pattern

Note: Cable pattern is worked over the 20 stitches between markers. Refer to Cable Pattern chart, if desired.

Row 1 (Cable Row – Right Side): Knit to marker, p1, 4/4 RC, p2, 4/4 RC, p1, knit to end of row.

Row 2: Purl to marker, k1, p8, k2, p8, k1, purl to end of row.

Row 3: Knit to marker, p1, k8, p2, k8, p1, knit to end of row.

Row 4: Knit to marker, k1, p8, k2, p8, k1, knit to end of row.

Row 5: Repeat Row 3.



Rows 6–8: Repeat Rows 2–4.
Row 9: Repeat Row 3.
Rows 10–12: Repeat Rows 2–4.
Rows 13–108 (120): Repeat last 12 rows 8 (9) more times.
Rows 109 (121)–114 (126): Repeat Rows 1–6.
Note: There should now be a total of 10 (11) cable crosses.
Row 115 (127): Knit to marker, [p1, k1, k2tog, k2, k2tog, k1, p1] 2 times, knit to end of row—58 (64) sts.
Row 116 (128): Knit to marker, k1, p6, k2, p6, k1, knit to end of row.
 Bind off in pattern.

Back
 Work same as front.

FINISHING
 Refer to assembly diagram, sew short end of back to side edge of front. Sew short end of front to side edge of back, matching **A** and **B**.

Collar
 With RS facing, circular needle, and 2 strands of yarn held together, begin at center front neck (C on assembly diagram), pick up and k31 (33) sts evenly spaced across first side of neck edge, then pick up and k31 (33) sts across other side of neck edge. Place marker for beginning of round. Work in rounds.

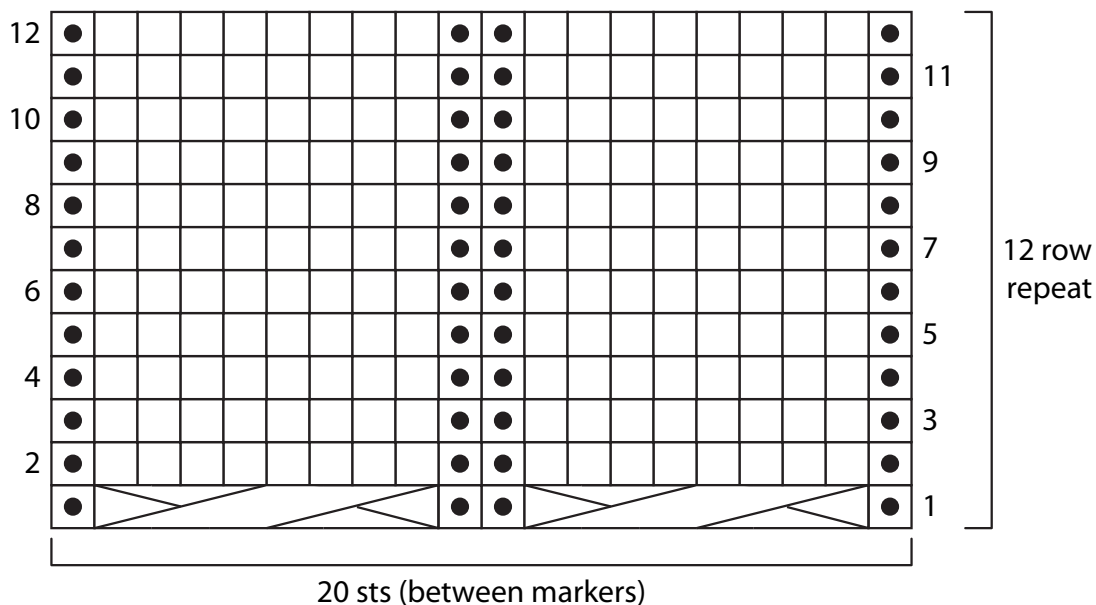
Round 1: K2, *p2, k2; repeat from * around.
 Repeat last round until collar measures 3" from beginning. Remove beginning of round marker. Turn, and begin working back and forth in rows.
Row 1: K4, knit the knit sts and purl the purl sts across to last 4 sts, k4.
Row 2: K2, p2, knit the knits sts and purl the purl sts across to last 4 sts, p2, k2.
 Repeat last 2 rows until collar measures 6" from beginning; end with a Row 1.
Next Row: Knit.
 Bind off as if to knit.
 Weave in ends. Block piece very lightly, if desired.




RED HEART® Shimmer™ Art. E763
 available in 3.5 oz (100 g), 28 yd
 (256 m) balls.

ABBREVIATIONS: **k** = knit; **k2tog** = knit next 2 sts together; **p** = purl; **st(s)** = stitch(es); **[]** = work directions in brackets the number of times specified; * = repeat whatever follows the * as indicated.

Cable Pattern



k on RS, p on WS
 p on RS, k on WS
 4/4 RC: Slip 4 sts to cable needle and hold in back, k4, then k4 from cable needle



CABLED & COLLARED PONCHO | KNIT

