



### MATERIALS

**Bernat® Maker Home Dec™** (8.8 oz/250 g; 317 yds/290 m)  
 Cream (11009) **6 balls or 1780 yds/1620 m**

Size U.S. 11 (8 mm) circular knitting needle 36" [91.5 cm] long **or size needed to obtain gauge.** Cable needle.

### ABBREVIATIONS:

**Alt** = Alternate  
**Approx** = Approximate(ly)  
**Beg** = Begin(ning)  
**C4B** = Slip next 2 stitches onto cable needle and leave at back of work. K2, then K2 from cable needle.  
**C4F** = Slip next 2 stitches onto cable needle and leave at front of work. K2, then K2 from cable needle  
**C6B** = Slip next 3 stitches onto cable needle and leave at back of work. K3, then K3 from cable needle  
**C6F** = Slip next 3 stitches onto cable needle and leave at front of work. K3, then K3 from cable needle  
**Cont** = Continue(ity)  
**K** = Knit  
**M1P** = Make 1 stitch by picking up loop lying before next stitch and purling into back of loop.  
**P** = Purl  
**P2tog** = Purl next 2 stitches together  
**Pat** = Pattern  
**Rep** = Repeat  
**RS** = Right side  
**St(s)** = Stitch(es)  
**T5B** = Slip next 2 stitches onto cable needle and leave at back of work. K3, then P2 from cable needle  
**T5F** = Slip next 3 stitches onto cable needle and leave at front of work. P2, then K3 from cable needle  
**WS** = Wrong side

 KNIT | SKILL LEVEL: INTERMEDIATE

### MEASUREMENTS

Approx 43 x 58" [109 x 147.5 cm].

### GAUGE

13 sts and 17 rows = 4" [10 cm] in stocking st.

### INSTRUCTIONS

**Cable Panel A** (worked over 6 sts).  
 See chart on page 2.

**1st row:** (RS). K6.  
**2nd and alt rows:** P6.  
**3rd row:** C4B. K2.  
**5th row:** K6.

**7th row:** K2. C4F.

**8th row:** P6.

These 8 rows form Cable Panel A.

**Cable Panel B** (worked over 15 sts)  
 See chart on page 2.

**1st row:** (RS). K3. P4. C6B. P2.  
**2nd row:** K2. P6. K4. P3.  
**3rd row:** T5F. T5B. T5F.  
**4th row:** P3. K4. P6. K2.  
**5th row:** P2. C6F. P4. K3.  
**6th row:** As 4th row.  
**7th row:** T5B. T5F. T5B.  
**8th row:** As 2nd row.  
 These 8 rows form Cable Panel B.

## BERNAT® BRAIDED CABLES KNIT THROW | KNIT

Cast on 141 sts. **Do not** join. Working back and forth across beg needle in rows, proceed as follows:  
**1st row:** (RS). \*K1. P1. Rep from \* to last st. K1.

Last row forms Seed St Pat. Work a further 7 rows in Seed St Pat.

**Next row:** (WS). (K1. P1) twice. K1. \*P3. M1P. P4. M1P. Rep from \* to last 10 sts. P3. M1P. P2. (K1. P1) twice. K1. 178 sts.

Proceed in Cable Pat as follows:

**1st row:** (RS). (K1. P1) twice. K1. \*P3. Work 1st row Cable Panel A. P3. K3. P3. Work 1st row Cable Panel B. P3. K3. Rep from \* to last 17 sts. P3. Work 1st row Cable Panel A. P3. (K1. P1) twice. K1.

**2nd row:** (K1. P1) twice. K1. \*K3. Work 2nd row Cable Panel A. K3. P1. K1. P1. K3. Work 2nd row Cable Panel B. K3. P1. K1. P1. Rep from \* to last 17 sts. K3. Work 2nd row Cable Panel A. K3. (K1. P1) twice. K1.

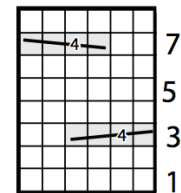
These 2 rows form pat. Cable Panels are now in position.

Cont in pat, keeping cont of Cable Panels until work from beg measures approx 56½" [143.5 cm], ending on a 1st row of Cable Panel A and B.

**Next row:** (WS). (K1. P1) twice. K1. \*P2. P2tog. P3. P2tog. Rep from \* to last 11 sts. P2. P2tog. P2. (K1. P1) twice. K1. 141 sts.

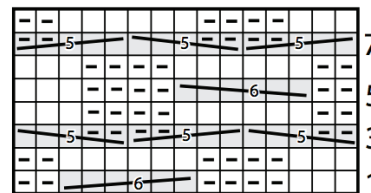
Work 8 rows in Seed St Pat across all sts. Cast off in pat.

Cable Panel A



Start Here

Cable Panel B



Start Here

### Key

☐ = Knit on RS rows. Purl on WS rows.

☐ = Purl on RS rows. Knit on WS rows.

= T5B

= T5F

= C6B

= C6F

= C4B

= C4F