



Designed by Joyce Geisler



Stacked Pumpkin Table Runner

Start a new tradition this Halloween season with this happy jack o' lantern table runner.

It's created in filet crochet using bright crochet thread and bordered in black for a spooky way to set off the look.

Table runner measures 40 x 13" (101.5 x 33 cm) not including fringe. Fringe adds about 10" (25.5 cm) to the length.

Special Stitches

open-mesh = Ch 2, skip next 2 stitches, dc in next stitch.

solid-mesh = Dc in next 3 stitches.

Note: When working mesh, each dc and ch counts as one stitch.

Notes

1. Table runner is worked by following written instructions and chart. The first few rows of the chart are written out in detail. After working the first few rows, complete the runner by following the chart.
2. Each filled box on the chart represents one solid-mesh and each empty box on the chart represents one open-mesh (see Special Stitches). Read right side rows of chart from right to left and wrong side rows from left to right.
3. A border is worked around the entire outer edge of the runner and a knotted fringe is added across both short edges.
4. When working 2 dc into a ch-2 space, you can work one dc in each of the 2 chains or you can work both dc into the ch-2 space, whichever you prefer.

TABLE RUNNER

With **A**, ch 128.

Row 1 (right side): Dc in 8th ch from hook (first open-mesh made), [ch 2, skip next 2 ch, dc in next ch] 10 times (10 more open-mesh made), dc in next 21 ch (7 solid-mesh made), [ch 2, skip next 2 ch, dc in next ch] 4 times (4 open-mesh made), dc in next 27 ch (9 solid-mesh made), [ch 2, skip next 2 ch, dc in next ch] 10 times (10 open-mesh made), turn—41 mesh.

Row 2: Ch 5 (counts as dc, ch 2 here and throughout), skip first ch-2 space, dc in next dc (first open-mesh made), [ch 2, dc in next dc] 8 times (8 more open-mesh made), 2 dc in next ch-2 space, dc in next 7 dc (3 solid-mesh made), [ch 2, skip next 2 dc, dc in next dc] 5 times (5 open-mesh made), dc in next 6 dc, [2 dc in next ch-2 space, dc in next dc] 4 times, dc in next 9 dc (9 solid-mesh made), [ch 2, skip next 2 dc, dc in next dc] 4 times (4 open-mesh made), [2 dc in next ch-2 space, dc in next dc] twice (2 solid-mesh made), [ch 2, skip next ch-2 space, dc in next dc] 8 times (8 open-mesh made), ch 2, dc in 3rd ch of turning ch (last open-mesh made), turn.

Row 3: Ch 5, skip first ch-2 space, dc in next dc, [ch 2, skip next ch-2 space, dc in next dc] 7 times, 2 dc in next ch-2 space, dc in next 4 dc, ch 2, skip next 2 dc, dc in next dc, [ch 2, skip next ch-2 space, dc in next dc] 4 times, [ch 2, skip next 2 dc, dc in next dc] 9 times, [ch 2, skip next ch-2 space, dc in next dc] 5 times, ch 2, skip next 2 dc, dc in next dc, dc in next 6 dc, 2 dc in next ch-2 space, dc in next dc, [ch 2, skip next ch-2 space, dc in next dc] 7 times, ch 2, dc in 3rd ch of turning ch, turn.

Rows 4–78: Continue to work pattern following chart.

Rows 79–155: Turn chart upside down and work rows again in opposite order, beginning with Row 77 and working down through Row 1. Fasten off.

Continued...

SHOP KIT

BORDER

Notes

1. First 2 rounds of border will look like a checkerboard of open- and solid-mesh.
2. Notice that there is a column of open-meshes across each long edge of the runner. You will work into the spaces and posts (at top of each row) between the spaces in the same way that you would work across the top of a row of open-meshes.
3. When working across the top edge, work into the stitches (each ch and each dc count as one st) of the last row. When working across the lower edge, work into the opposite side of the foundation chain (each ch counts as one st).

With right side facing, join **B** with slip st in a corner to work across a long edge of the runner.

Round 1: Ch 3 (counts as first dc), 2 dc in space at end of next row, ***dc at top of same row, *ch 2, skip space at end of next row, dc at top of row, 2 dc in space at end of next row, dc at top of row; repeat from * across long side edge to next corner space, (3 dc, ch 5, 3 dc) in corner space; working across short edge of runner, dc in next st, ch 2, skip next 2 sts (this may be 2 dc or a ch-2 space), dc in next st, **dc in next 3 sts (this may be 3 dc or a ch-2 space and a dc), ch 2, skip next 2 sts, dc in next st; repeat from ** across short edge to next corner space, (3 dc, ch 5, 3 dc) in corner space; repeat from *** to work border across 2nd long side and 2nd short side ending at last corner space, 3 dc in last corner space, ch 5; join with slip st in top of beginning ch-3, do not turn.

Round 2: Ch 5, skip next 2 dc, dc in next dc, *2 dc in next ch-2 space, dc in next dc, ch 2, skip next 2 dc, dc in next dc; repeat from * to next corner space, (3 dc, ch 5, 3 dc) in corner space, [dc in next dc, **ch 2, skip next 2 dc, dc in next dc, 2 dc in next ch-2 space, dc in next dc; repeat from ** to next corner space, (3 dc, ch 5, 3 dc) in corner space] 3 times; join with slip st in 3rd ch of beginning ch-5.

Round 3: Ch 5, skip first ch-space, dc in next dc, **ch 2, skip next 2 dc, dc in next dc, *ch 2, skip next ch-2 space, dc in next dc, ch 2, skip next 2 dc, dc in next dc; repeat from * to next corner space, ch 2, (dc, ch 5, dc) in 3rd ch of corner ch-5, ch 2, skip remainder of corner ch-5, dc in next dc; repeat from ** around, ch 2; join with slip st in 3rd ch of beginning ch-5. Fasten off.

TRIPLE KNOT FRINGE

Attach Fringe: Cut 4 strands of **B**, each 12" (30.5 cm) long. Hold all 4 strands together and fold in half. Insert crochet hook from right side to wrong side through first space on one short edge of runner, place fold on hook and draw fold through to right side, thread ends of strands through loop formed by fold and pull on the ends to tighten (fringe knot made). Repeat this process to attach a fringe to every space across both short ends of runner.

First Row of Knots: Turn runner over so wrong side is facing you. Separate first 2 fringes into 2 groups of 4 strands each. Begin with the 2nd group of 4-strands from the first fringe and the first group of 4-strands from the 2nd fringe. Tie the two groups together with an overhand knot and pull tight about ¾" (19 mm) below the fringe knots. Repeat this process all the way across, leaving the last 4-strand group loose. Repeat across other short edge. **Note:** The first and last 4-strand groups of each short side should be loose.

Second Row of Knots: Beginning with the first (un-tied) 4-strand group from previous row, separate the next group of strands into 2 groups of 4-strands each and tie the first of these two 4-strand groups to the previous 4-strand group with an overhand knot about ¾" (19 mm) below the previous knots. Repeat this process all the way across both short edges. Trim ends as desired.

FINISHING

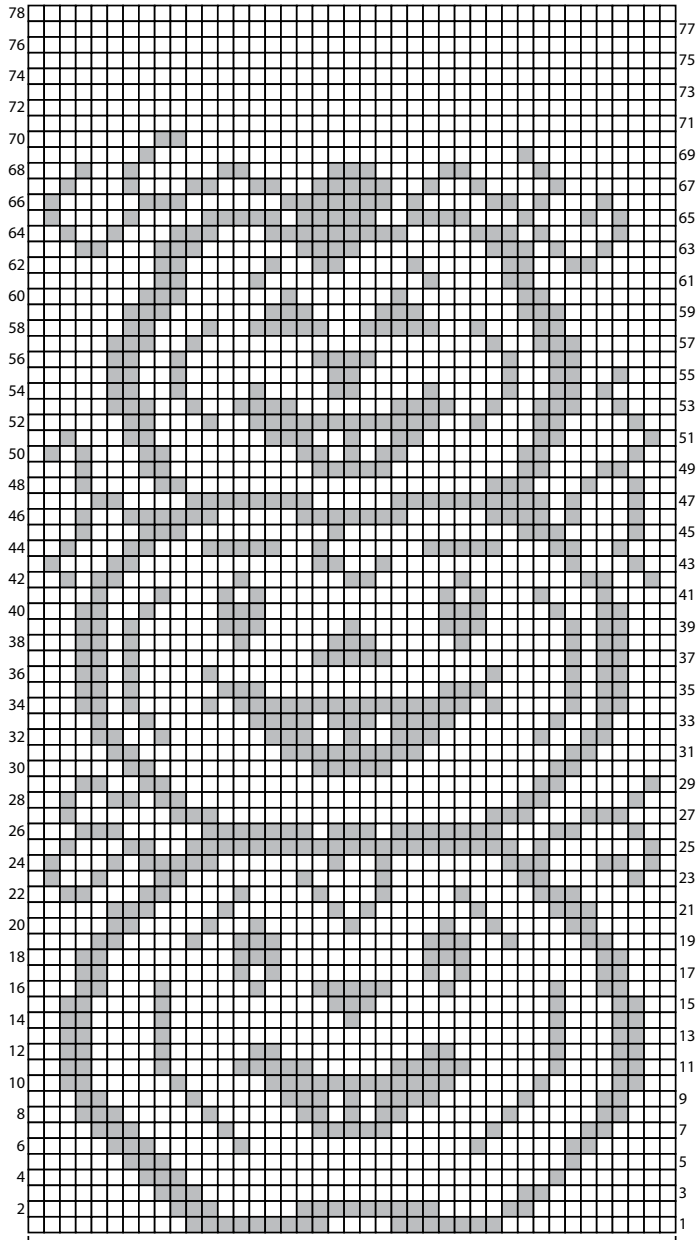
Weave in ends. Block and starch piece as desired.

ABBREVIATIONS

A and **B** = Color A and Color B; **ch** = chain; **dc** = double crochet; **st(s)** = stitch (es); **()** = work directions in parentheses into same st; **[]** = work directions in brackets the number of times specified; ***** or ****** = repeat whatever follows the * or ** as indicated.

See next page for chart





41 mesh (foundation = ch 128)

- = open-mesh: Ch 2, sk 2 sts, dc in next st
- = solid-mesh: Dc in next 3 sts