

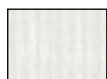


## MEASUREMENTS

Approx 43" x 55" [109 x 139.5 cm].

## MATERIALS

**Bernat® Super Value™** (197 g/7 oz; 389 m/426 yds)



Natural (07414)

**5 balls**

Size 5 mm (U.S. 8) knitting needles. Size 5 mm (U.S. 8) circular knitting needle 36" [90 cm] long **or size needed to obtain gauge.** Cable needle.

## GAUGE

18 sts and 24 rows = 4" [10 cm] in stocking st.

## ABBREVIATIONS: [www.bernat.com/abbreviations](http://www.bernat.com/abbreviations)

**Approx** = Approximately

**Beg** = Beginning

**C4B** = Slip next 2 stitches onto cable needle and leave at back of work. K2, then K2 from cable needle

**C4F** = Slip next 2 stitches onto cable needle and leave at front of work. K2, then K2 from cable needle

**Cont** = Continue(ity)

**Double Inc** = (K1. P1. K1) all in next stitch

**K** = Knit

**K2tog** = Knit next 2 stitches together

**Pat** = Pattern

**P** = Purl

**Rep** = Repeat

**Rem** = Remaining

**RS** = Right side

**Ssk** = Slip next 2 stitches knitwise one at a time. Pass them back onto left-hand needle, then knit through back loops together.

**St(s)** = Stitch(es)

**T3B** = Slip next stitch onto cable needle and leave at back of work. K2, then P1 from cable needle.

**T3F** = Slip next 2 stitches onto cable needle and leave at front of work. P1, then K2 from cable needle.

**T4B** = Slip next 2 stitches onto cable needle and leave at back of work. K2, then P2 from cable needle.

**T4F** = Slip next 2 stitches onto cable needle and leave at front of work. P2, then K2 from cable needle.

**Tog** = Together

**Wrap 3** = With yarn in back of work, slip next 3 stitches onto right-hand needle. Bring yarn to front of work. Slip 3 stitches back onto left-hand needle and bring yarn in front of stitches and to back of work. (K2tog. yo. K1) same 3 stitches.

**WS** = Wrong side

**Yo** = Yarn over

## INSTRUCTIONS

### CHAIN OF HEARTS PANEL (make 3)

(See Chart on page 3).

Cast on 35 sts.

**1st row:** (RS). P3. K3. P2. K2. (P1. K1) 7 times. P1. K2. P2. K3. P3.

**2nd row:** K3. P3. K2. P3. (K1. P1) 7 times. P2. K2. P3. K3.

**3rd row:** P3. Wrap 3. P2. K2. (P1. K1) twice. P1. K2tog. Double Inc in next st. ssk. (P1. K1) twice. P1. K2. P2. Wrap 3. P3.

**4th row:** K3. P3. K2. P3. K1. P1. K1. P7. K1. P1. K1. P3. K2. P3. K3.

**5th row:** P3. K3. P2. T3F. K1. P1. K1. K2tog. K1. Double Inc in next st. K1. ssk. K1. P1. K1. T3B. P2. K3. P3.

**6th row:** K3. P3. K3. P2. K1. P1. K1. P7. K1. P1. K1. P2. K3. P3. K3.

**7th row:** P3. Wrap 3. P3. T4F. C4B. K1. C4F. T4B. P3. Wrap 3. P3.

**8th row:** K3. P3. K5. P4. (K1. P1) 3 times. P3. K5. P3. K3.

**9th row:** P3. K3. P5. T4B. (K1. P1) twice. K1. T4F. P5. K3. P3.

**10th row:** K3. P3. K5. P2. (K1. P1) 5 times. P1. K5. P3. K3.

**11th row:** P3. Wrap 3. P4. T3B. (K1. P1) 4 times. K1. T3F. P4. Wrap 3. P3.

**12th row:** K3. P3. K4. P3. (K1. P1) 5 times. P2. K4. P3. K3.

**13th row:** P3. K3. P3. T3B. (P1. K1) 5 times. P1. T3F. P3. K3. P3.

**14th row:** K3. P3. K3. P2. (K1. P1) 7 times. P1. K3. P3. K3.

**15th row:** P3. Wrap 3. P2. T3B. (K1. P1) 6 times. K1. T3F. P2. Wrap 3. P3.

**16th row:** As 2nd row.

**17th and 18th rows:** As 1st and 2nd rows.

**19th row:** P3. Wrap 3. P2. K2. (P1. K1) 7 times. P1. K2. P2. Wrap 3. P3.

**20th row:** As 2nd row.

These 20 rows form Chain of Hearts Cable Panel.



Rep last 20 rows 14 times more, then rep 1st to 12th rows once. Panel should measure approx 52" [137 cm] long. Cast off in pat.

## LOVERS' KNOTS PANEL (make 2)

(See Chart on page 3).

Cast on 56 sts.

**1st row:** (RS). P3. K3. (P1. K1) twice. P1. K3. (P4. K4) 3 times. P4. K3. (P1. K1) twice. P1. K3. P3.

**2nd row:** K3. P4. K1. P1. K1. P4. (K4. P4) 4 times. K1. P1. K1. P4. K3.

**3rd row:** P3. K3. (P1. K1) twice. P1. K3. P4. T4F. P4. C4B. P4. T4B. P4. K3. (P1. K1) twice. P1. K3. P3.

**4th row:** K3. P4. K1. P1. K1. P4. K6. P2. K4. P4. K4. P2. K6. P4. K1. P1. K1. P4. K3.

**5th row:** P3. K3. (P1. K1) twice. P1. K3. P6. (T4F. T4B) twice. P6. K3. (P1. K1) twice. P1. K3. P3.

**6th row:** K3. P4. K1. P1. K1. P4. K8. P4. K4. P4. K8. P4. K1. P1. K1. P4. K3.

**7th row:** P3. K3. (P1. K1) twice. P1. K3. P8. C4B. P4. C4F. P8. K3. (P1. K1) twice. P1. K3. P3.

**8th row:** As 6th row.

**9th row:** P3. K3. (P1. K1) twice. P1. K3. P6. C4B. T4F. T4B. C4F. P6. K3. (P1. K1) twice. P1. K3. P3.

**10th row:** K3. P4. K1. P1. K1. P4. K6. (P4. K2) twice. P4. K6. P4. K1. P1. K1. P4. K3.

**11th row:** P3. K3. (P1. K1) twice. P1. K3. P4. T4B. K2. P2. C4B. P2. K2. T4F. P4. K3. (P1. K1) twice. P1. K3. P3.

**12th row:** K3. P4. K1. P1. K1. P4. K4. (P2. K2) twice. P4. (K2. P2) twice. K4. P4. K1. P1. K1. P4. K3.

**13th row:** P3. K3. (P1. K1) twice. P1. K3. P4. (K2. P2) twice. K4. (P2. K2) twice. P4. K3. (P1. K1) twice. P1. K3. P3.

**14th row:** As 12th row.

**15th row:** P3. K3. (P1. K1) twice. P1. K3. P4. K2. T4B. P2. C4B. P2. T4F. K2. P4. K3. (P1. K1) twice. P1. K3. P3.

**16th row:** As 2nd row.

**17th row:** P3. K3. (P1. K1) twice. P1. K3. P4. T4B. P2. T4B. T4F. P2. T4F. P4. K3. (P1. K1) twice. P1. K3. P3.

**18th row:** K3. P4. K1. P1. K1. P4. (K4. P2) 4 times. K4. P4. K1. P1. K1. P4. K3.

**19th row:** P3. K3. (P1. K1) twice. P1. K3. P2. T4B. P2. C4B. P4. C4F. P2. T4F. P2. K3. (P1. K1) twice. P1. K3. P3.

**20th row:** K3. P4. K1. P1. K1. P4. K2. P2. K4. (P4. K4) twice. P2. K2. P4. K1. P1. K1. P4. K3.

**21st row:** P3. K3. (P1. K1) twice. P1. K3. P2. K2. P2. T4B. K2. P4. K2. T4F. P2. K2. P2. K3. (P1. K1) twice. P1. K3. P3.

**22nd row:** K3. P4. K1. P1. K1. P4. (K2. P2) 3 times. K4. (P2. K2) 3 times. P4. K1. P1. K1. P4. K3.

**23rd row:** P3. K3. (P1. K1) twice. P1. K3. (P2. K2) 3 times. P4. (K2. P2) 3 times. K3. (P1. K1) twice. P1. K3. P3.

**24th row:** As 22nd row.

**25th row:** P3. K3. (P1. K1) twice. P1. K3. (P2. K2) twice. T4B. P4. T4F. (K2. P2) twice. K3. (P1. K1) twice. P1. K3. P3.

**26th row:** K3. P4. K1. P1. K1. P4. K2. P2. K2. P4. K8. P4. K2. P2. K2. P4. K1. P1. K1. P4. K3.

**27th row:** P3. K3. (P1. K1) twice. P1. K3. P2. T4F. T4B. P8. T4F. T4B. P2. K3. (P1. K1) twice. P1. K3. P3.

**28th row:** K3. P4. K1. P1. K1. P4. K4. P4. K12. P4. K4. P4. K1. P1. K1. P4. K3.

**29th row:** P3. K3. (P1. K1) twice. P1. K3. P4. C4F. P12. C4B. P4. K3. (P1. K1) twice. P1. K3. P3.

**30th row:** As 28th row.

**31st row:** P3. K3. (P1. K1) twice. P1. K3. P4. K4. P12. K4. P4. K3. (P1. K1) twice. P1. K3. P3.

**32nd and 33rd rows:** As 28th and 29th rows.

**34th row:** As 28th row.

**35th row:** P3. K3. (P1. K1) twice. P1. K3. P2. T4B. C4F. P8. C4B. T4F. P2. K3. (P1. K1) twice. P1. K3. P3.

**36th row:** As 26th row.

**37th row:** P3. K3. (P1. K1) twice. P1. K3. (P2. K2) twice. T4F. P4. T4B. (K2. P2) twice. K3. (P1. K1) twice. P1. K3. P3.

**38th and 39th rows:** As 22nd and 23rd rows.

**40th row:** As 22nd row.

**41st row:** P3. K3. (P1. K1) twice. P1. K3. P2. K2. P2. T4F. K2. P4. K2. T4B. P2. K2. P2. K3. (P1. K1) twice. P1. K3. P3.

**42nd row:** As 20th row.

**43rd row:** P3. K3. (P1. K1) twice. P1. K3. (P2. T4F) twice. P4. (T4B. P2) twice. K3. (P1. K1) twice. P1. K3. P3.

**44th row:** As 18th row.

**45th row:** P3. K3. (P1. K1) twice. P1. K3. P4. C4F. P2. T4F. T4B. P2. C4B. P4. K3. (P1. K1) twice. P1. K3. P3.

**46th row:** As 16th row.

**47th row:** P3. K3. (P1. K1) twice. P1. K3. P4. K2. T4F. P2. C4B. P2. T4B. K2. P4. K3. (P1. K1) twice. P1. K3. P3.

**48th row:** As 14th row.

**49th and 50th rows:** As 13th and 14th rows.

**51st row:** P3. K3. (P1. K1) twice. P1. K3. P4. T4F. K2. P2. C4B. P2. K2. T4B. P4. K3. (P1. K1) twice. P1. K3. P3.

**52nd row:** As 10th row.

**53rd and 54th rows:** As 5th and 6th rows.

**55th row:** P3. K3. (P1. K1) twice. P1. K3. P8. C4F. P4. C4B. P8. K3. (P1. K1) twice. P1. K3. P3.

**56th row:** As 6th row.

**57th row:** P3. K3. (P1. K1) twice. P1. K3. P6. (T4B. T4F) twice. P6. K3. (P1. K1) twice. P1. K3. P3.

**58th row:** As 4th row.

**59th row:** P3. K3. (P1. K1) twice. P1. K3. P4. (C4B. P4) twice. C4F. P4. K3. (P1. K1) twice. P1. K3. P3.

**60th row:** As 2nd row.

**61st and 62nd rows:** As 1st and 2nd rows.

**63rd row:** P3. K3. (P1. K1) twice. P1. K3. P4. K4. P4. C4B. P4. K4. P4. K3. (P1. K1) twice. P1. K3. P3.

**64th row:** As 2nd row.

These 64 rows form Lovers' Knots Panel.

Rep last 64 rows 3 times more, then rep 1st to 52nd rows once. Panel should measure approx 52" [137 cm] long. Cast off in pat.

## FINISHING

Pin Panels to measurements. Cover with a damp cloth, leaving cloth to dry. Sew Panels tog as follows: (Chain of Hearts Panel. Lovers' Knots Panel) twice. Chain of Hearts Panel.

**Top and Bottom edging:** With RS facing and circular needle, pick up and knit 173 sts evenly across top edge of Afghan. **Do not** join. Working back and forth across needle in rows, proceed as follows:

**1st row:** (WS). \*K1. P1. Rep from \* to last st. K1. Rep last row for seed st pat 6 times more. Cast off in pat.

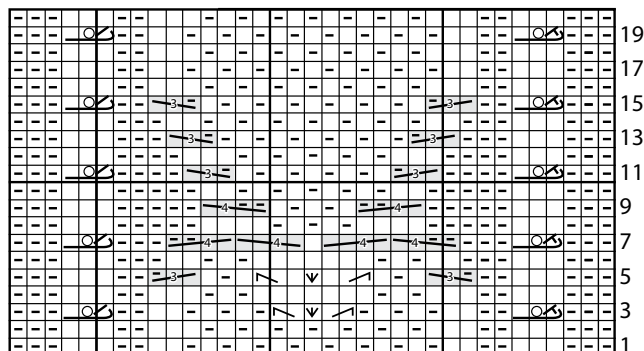
Rep across bottom edge of Afghan.

**Side edging:** With RS facing and circular needle, pick up and knit 229 sts evenly along side edge of Afghan. **Do not** join. Working back and forth across needle in rows, work 7 rows in seed st pat as given for Top and Bottom edging. Cast off in pat.

Rep along opposite side of Afghan.



### Chain of Hearts Panel

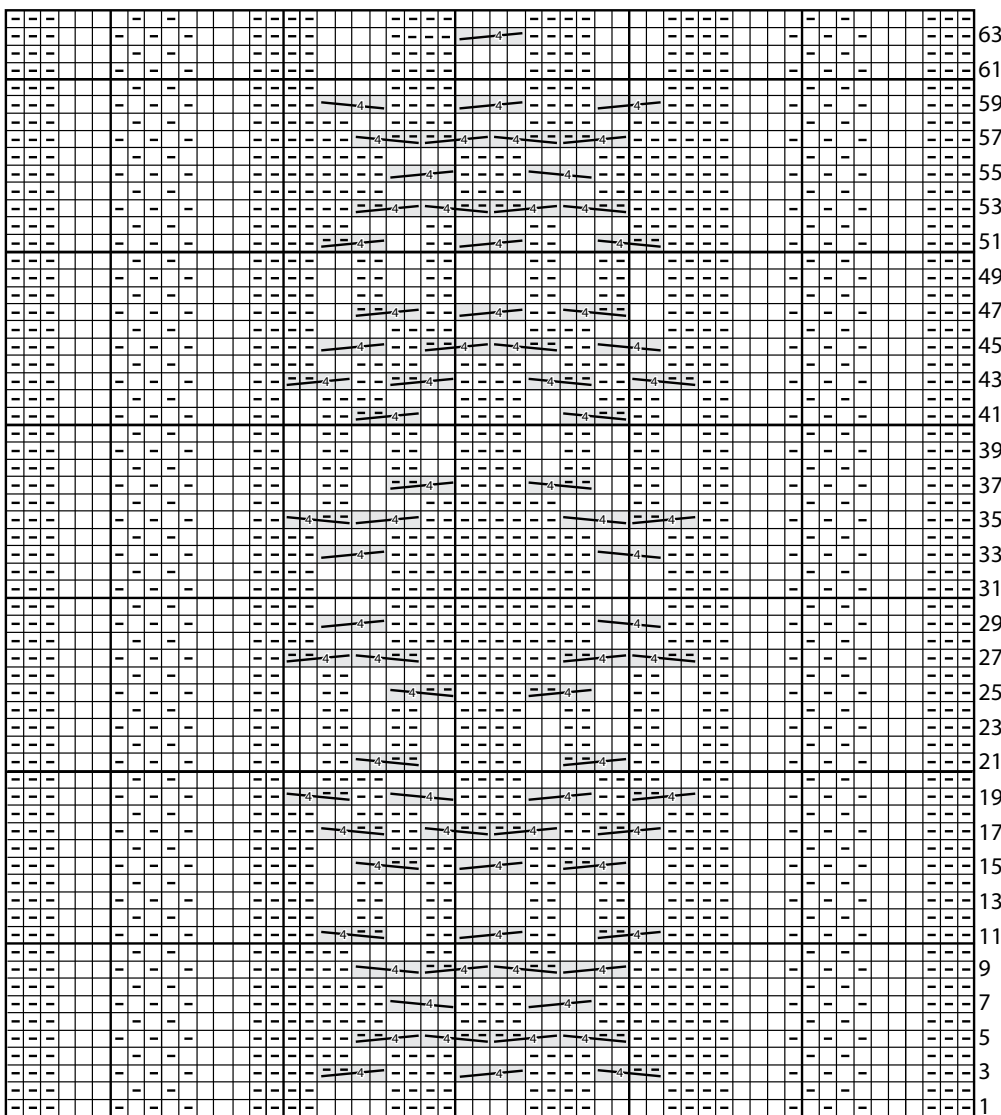


Start Here

### Key

- = Knit on RS rows. Purl on WS rows.
- ◻ = Purl on RS rows. Knit on WS rows.
- = Wrap 3
- = ssk
- = K2tog
- = T3B
- = T3F
- = T4B
- = T4F
- = C4B
- = C4F
- = Double Inc

### Lovers' Knots Panel



Start Here

### Key

- = Knit on RS rows. Purl on WS rows.
- ◻ = Purl on RS rows. Knit on WS rows.
- = T4B
- = T4F
- = C4B
- = C4F