



KNIT
SKILL LEVEL
INTERMEDIATE

Designed by Jodi Lewanda



What you will need:

RED HEART® Buttercup®: 3 (4, 5, 6) balls 4721 Ballet Slipper

Susan Bates® Circular Knitting Needles: 6mm [US 10] 24" (61 cm) or longer

Susan Bates® Crochet Hook: 5mm [US H-8]

Stitch markers, stitch holders, spare needle for 3-needle bind-off, one 1" (2.5 cm) button, sewing needle and matching thread, yarn needle.

GAUGE: 12 sts = 4" (10 cm); 18 rows = 4" (10 cm) in Garter St
CHECK YOUR GAUGE. Use any size needles to obtain the gauge.



RED HEART® Buttercup®, Art. N396 available in 1¼oz (50g), 63 yd (57m) balls

SHOP KIT

Playful Hooded Poncho

Cozy and oh so cute! This fleecy poncho is lightweight and huggable, so your little one won't complain about any scratchiness. It's perfect for the young fashionable child.

Directions are for size 6 months; changes for sizes 12, 18, and 24 months are in parentheses.

Width not including sleeves: 13½ (15¼, 18, 19½)" (34.5 (38.5, 45.5, 49.5) cm)

Length: 10½ (12, 13½, 15)" (26.5 (30.5, 34.5, 38) cm)

NOTES

Poncho is worked back and forth in rows. The circular needle is used in order to hold the full width of the piece.

SPECIAL STITCHES

M1 = Make 1 (Inc) – Lift strand between needles to left-hand needle and work strand through the back loop, twisting it to prevent a hole, [knit or purl as indicated by pattern st].

ssk = slip next two stitches knitwise to right needle, insert point of left needle through front of sts, knit these sts together through back loop.

SPECIAL TECHNIQUE

Three-Needle Bind-off

Hold both pieces to be joined in your left hand, needles parallel to each other, one in front of the other, with right sides facing each other. Hold a third, empty needle in your right hand. Insert right needle knitwise into the first st on both front and back needles, and knit them together. Work the next pair of sts the same way, then pass first st on right needle over second st. Continue in this manner until all sts have been bound off.

BACK

Cast on 24 (26, 30, 34) sts.

Row 1 (wrong side): Knit.

Place a marker to indicate which side is the right side.

Next 2 (4, 4, 4) rows: Cast on 2 sts, knit to end – 28 (34, 38, 42) sts.

Next 4 rows:

Row 1 and 2: Knit evenly.

Rows 3 and 4: Cast on 2 sts, knit to end – 32 (38, 42, 46) sts.

Repeat the last 4 rows 0 (0, 1, 1) more times – 32 (38, 46, 50) sts.

Knit 2 rows evenly.

Next 4 rows (inc rows): K1, M1, knit to end – 36 (42, 50, 54) sts.

Next 4 rows:

Row 1 and 2: Knit evenly.

Rows 3 and 4 (inc rows): K1, M1, knit to end – 38 (44, 52, 56) sts.

Repeat the last 4 rows once more – 40 (46, 54, 58) sts.

Knit evenly until piece measures 10½ (12, 13½, 15)" (26.5 (30.5, 34.5, 38) cm) from cast on edge, ending after a WS row.

Cut yarn and place all sts on a holder.

Continued...



2015
WOMEN'S CHOICE AWARD
AMERICA'S MOST RECOMMENDED
YARN BRAND



FRONT

Work same as Back until piece measures 8½ (10, 11, 12½)" (21.5 (25.5, 28, 32) cm) from cast on edge, ending after a WS row.

Separate for Neck

Next row (right side): K20 (23, 27, 29), join a second ball of yarn and knit to end.

Work both halves at the same time with separate balls of yarn until piece measures 9 (10½, 12, 13½)" (23 (26.5, 30.5, 34.5) cm) from cast on edge, ending after a WS row.

Neck Shaping

Next 6 rows:

Rows 1 and 2: Knit to end of first half, bind off 4 (5, 5, 6) sts at beginning of second half, knit to end – 16 (18, 22, 23) sts on each side.

Rows 3 and 4: Knit to end of first half, bind off 3 (3, 4, 4) sts at beginning of second half, knit to end – 13 (15, 18, 19) sts on each side.

Rows 5 and 6: Knit to end of first half, bind off 2 sts at beginning of second half, knit to end – 11 (13, 16, 17) sts on each side.

Join Shoulders

Join Front shoulder sts to back with three-needle bind-off, working from the outer edge inward.

Leave remaining 18 (20, 22, 24) back neck sts on holder.

SLEEVES

Place markers 3¾ (4, 4¼, 4¾)" (9.5 (10, 11, 12) cm) down from shoulder seams on both Front and Back.

With right side facing, pick up and knit 22 (24, 26, 28) sts between markers.

Next 4 rows:

Rows 1-3: Knit.

Row 4 (right side): K1, ssk, knit to last 3 sts, k2tog, k1 – 20 (22, 24, 26) sts.

Repeat last 4 rows 0 (0, 1, 1) time(s). 20 (22, 22, 24) sts.

Next 2 rows:

Row 1: Knit.

Row 2: K1, ssk, knit to last 3 sts, k2tog, k1 – 18 (20, 20, 22) sts.

Repeat the last 2 rows 0 (1, 1, 1) more times – 18 (18, 18, 20) sts.

Bind off all sts.

Work other Sleeve the same.

HOOD

With right side facing and beginning at neck corner, pick up and knit 11 (12, 13, 14) sts up right front neck edge, k18 (20, 22, 24) from back neck holder, pick up and knit 11 (12, 13, 14) sts down left front neck edge to corner – 40 (44, 48, 52) sts.

Place markers on either side of 2 center sts on needle.

Next 4 rows:

Rows 1-3: Knit.

Row 4 (right side): Knit to marker, M1, slip marker, k2, slip marker, M1, knit to end – 42 (46, 50, 54) sts.

Repeat the last 4 rows 1 (1, 2, 2) more times – 44 (48, 54, 58) sts.

Work evenly until hood measures 7½ (8, 8½, 9)" (19 (20.5, 21.5, 23) cm), ending after a right side row.

Slip half of the sts onto a spare needle and fold hood in half so that right sides are facing each other.

Seam top of Hood with three-needle bind-off.

EARS

Cast on 12 (12, 14, 14) sts.

Rows 1-3: Knit.

Row 4 (dec row, right side): K1, ssk, knit to last 3 sts, k2tog, k1 – 10 (10, 12, 12) sts.

Repeat last 4 rows 2 (2, 3, 3) times, then work dec row only once more – 4 sts.

Bind off.

Work other Ear the same.

BUTTON LOOP

With crochet hook, chain 10. Fasten off.

FINISHING

Sew underarm seams, continuing down approximately 1½ (1½, 2, 2)" (4 (4, 5, 5) cm) along side seams.

Sew button to left front at neck split.

Sew ends of button loop to right front, across from button.

Fold bottom corners of Ears to center and tack in place. Sew ears to top of hood.

Weave in ends.

ABBREVIATIONS

dec = decrease; **inc** = increase; **k** = knit;

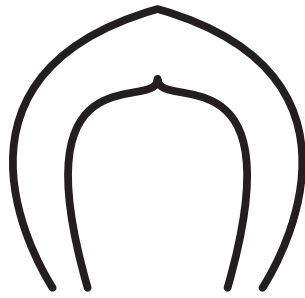
K2tog = knit next 2 sts together; **p** = purl;

st(s) = stitch(es); **St st** = Stockinette st; *** or**

****** = repeat whatever follows the * or ** as indicated.

See schematic on next page...

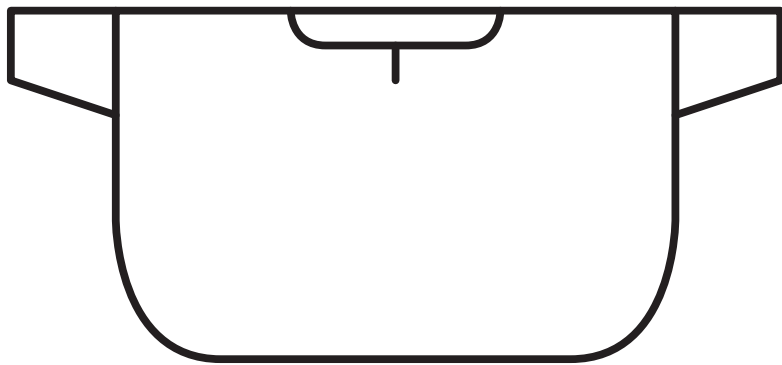
14¾ (16, 18, 19¼)"



7½ (8, 8½, 9)"

3¾ (4¼,
5¼, 5¾)"

6 (6¾,
7½, 8)"



10½ (12, 13½, 15)"

13½ (15¼, 18, 19½)"

1¼ (1¾,
2¾, 2¾)"

