



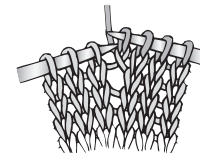
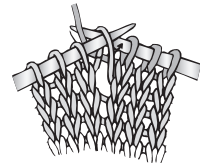
Svetlana Avrakh  
Designer



KNIT | SKILL LEVEL: INTERMEDIATE

### ABBREVIATIONS

- Alt** = Alternate(ing)
- Beg** = Beginning
- Cont** = Continue(ity)
- Dec** = Decrease(ing)
- Inc** = Increase(ing)
- K** = Knit
- Kfb** = Increase 1 stitch by knitting into front and back of next stitch
- K2tog** = Knit next 2 stitches together
- M1** = Make 1 stitch by picking up loop lying before next stitch and knitting into back of loop.



- P** = Purl
- PM** = Place marker
- Rem** = Remaining

- Rep** = Repeat
- Rnd(s)** = Round(s)
- RS** = Right side
- Ssk** = Slip next 2 stitches knitwise one at a time. Pass them back onto left-hand needle, then knit through back loops together
- St(s)** = Stitch(es)
- Tog** = Together
- WS** = Wrong side
- WTK** = Slip next stitch purlwise onto right-hand needle. Bring yarn to front. Slip stitch back onto left-hand needle. Bring yarn to back of work, ready to purl next row. Turn.
- WTP** = With yarn in front, slip next stitch purlwise onto right-hand needle. Bring yarn to back. Slip stitch back onto left-hand needle. Bring yarn to front of work, ready to knit next row. Turn.

### MATERIALS

Patons® Alpaca Blend™ (3.5 oz/100 g; 155 yds/142 m)

Sizes	XS/S	M/L	XL/2XL	3/5XL	
Main Color (MC) Blueprint (01024)	6	7	9	10	balls
Contrast A Birch (01019)	1	1	2	2	ball(s)

Sizes U.S. 9 (5.5 mm) and U.S. 10 (6 mm) circular knitting needles 36" [91.5 cm] long. Set of 4 sizes U.S. 9 (5.5 mm) and U.S. 10 (6 mm) double-pointed knitting needles **or size needed to obtain gauge.** Stitch marker. 4 st holders.

## SIZES

### To fit bust measurement

<b>XS/S</b>	<b>28-34" [71-86.5 cm]</b>
<b>M/L</b>	<b>36-42" [91.5-106.5 cm]</b>
<b>XL/2XL</b>	<b>44-50" [112-127 cm]</b>
<b>3/5XL</b>	<b>52-62" [132-157.5 cm]</b>

### Finished bust

<b>XS/S</b>	<b>43½" [110.5cm]</b>
<b>M/L</b>	<b>48" [122 cm]</b>
<b>XL/2XL</b>	<b>57½" [146 cm]</b>
<b>3/5XL</b>	<b>66" [167.5 cm]</b>

## GAUGE

15 sts and 20 rows = 4" [10 cm] in stocking st with larger needles.

## INSTRUCTIONS

The instructions are written for smallest size. If changes are necessary for larger size(s) the instructions will be written thus ( ). Numbers for each size are shown in the same color throughout the pattern. When only one number is given in black, it applies to all sizes.

**Note:** Pullover is worked from neck edge down. When working from charts, carry yarn not in use loosely across WS of work but never over more

than 5 sts. When it must pass over more than 5 sts, weave it over and under color in use on next st or at center point of sts it passes over. The colors are never twisted around one another.

## PULLOVER

**Neckband:** With MC and smaller double-pointed needles, beg at neck edge cast on **76 (76-80-80)** sts. Divide sts onto 3 needles. Join in rnd. PM on first st (center back). **1st rnd:** \*K2. P2. Rep from \* around. Rep last rnd of (K2. P2) ribbing for 2" [5 cm], inc 4 sts evenly around last rnd. **80 (80-84-84)** sts.

Change to larger double-pointed needles and proceed as follows:

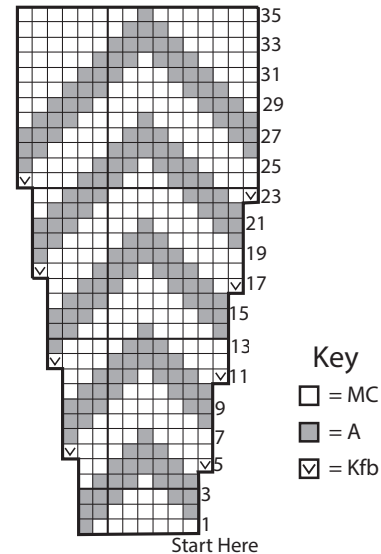
**Next rnd:** \*K**10 (10-7-7)**. M1. Rep from \* around. **88 (88-96-96)** sts. Knit 1 rnd.

**Next rnd:** \*K**11 (11-12-12)**. M1. Rep from \* around. **96 (96-104-104)** sts. Knit.

Cont in same manner, inc 8 sts on next and every following alt rnd **3 (2-5-5)** times more, then every following 3rd rnd **1 (3-2-4)** time(s)

more, changing to larger circular needle where necessary. **136 (144-168-184)** sts.

Work Chart to end of chart, reading rnds from **right to left** and noting 8-st chart rep will be worked **17 (18-21-23)** times. **272 (288-336-368)** sts. Break A.



**Next rnd:** With MC, knit dec 8 sts evenly around. **264 (280-328-360)** sts.

**Next rnd:** Knit.

**Divide Body and Sleeves: Next rnd:** K**40 (43-52-59)**. Cast on **2 (4-4-10)** sts. Slip next **52 (54-60-62)** sts onto contrast color length of yarn for Sleeve. K**80 (86-104-118)** (Front). Cast on **2 (4-4-10)** sts. Slip next **52 (54-60-62)** sts onto contrast color length of yarn for Sleeve. K**40 (43-52-59)**. **164 (180-216-248)** sts for Body.

Knit even in rnds until work from dividing rnd measures **12 (12-13-14)" [30.5 (30.5-33-35.5) cm]**.

**Shape Hi-Lo bottom edge - Short rows: Next row:** With MC, K**72 (80-98-110)**. WTK. **Turn.**

**Next row:** Slip first wrapped st. P**143 (159-188-219)**. WTP. **Turn.**

**Next row:** Slip first wrapped st. K**138 (154-181-211)**. WTK. **Turn.**

**Next row:** Slip first wrapped st. P**133 (149-174-203)**. WTP. **Turn.**

**Next row:** Slip first wrapped st. K**128 (144-167-195)**. WTK. **Turn.**

**Next row:** Slip first wrapped st. P**123 (139-160-187)**. WTP. **Turn.**

**Next row:** Slip first wrapped st. K**118 (134-153-179)**. WTK. **Turn.**

**Next row:** Slip first wrapped st. P**113 (129-146-171)**. WTP. **Turn.**

**Next row:** Slip first wrapped st. K98 (124-159-163). WTK. Turn.

**Next row:** Slip first wrapped st. P93 (119-152-155). WTP. Turn.

**Next row:** Slip first wrapped st. Knit to marker.

**Note:** When knitting wrapped sts, pick up 'wrap', place it onto left-hand needle and work next st tog with 'wrap' for each wrapped st – this will prevent holes or gaps in your work.

**Next rnd:** Knit all sts, working all wrapped sts as described above.

Change to smaller, circular needle. Work 1½" [4 cm] in (K2, P2) ribbing as given for neckband. Cast off in ribbing.

## SLEEVES

With RS facing, set of larger needles and MC, beg in center of 2 (4-4-10) underarm sts cast on edge, pick up and knit 1 (2-2-5) st(s). K52 (54-60-62) from length of yarn. Pick up and knit 1 (2-2-5) st(s) across rem half of underarm cast on edge. 54 (58-64-72) sts. Divide sts onto 3 needles. Join in rnd. PM on first st.

Knit 7 rnds even.

**Next rnd:** K2tog. Knit to last 2 sts. ssk.

Rep last 8 rnds 6 (6-7-7) times more. 40 (44-48-56) sts.

Knit even until work from underarm measures 15½" [39.5 cm].

Change to smaller double-pointed needles.

**Next rnd:** \*K2. P2. Rep from \* around.

Rep last rnd for 1½" [4 cm].

**Next rnd:** Knit.

Cast off knitwise.

