

Patons
Classic Wool

Patons
DECOR



TEXTURE & FLOWERS

SIZES

Bust measurement

Small	30-32 ins	[76-81 cm]
Medium	34-36 ins	[86-91 cm]
Large	38-40 ins	[97-102 cm]
X-Large	42-44 ins	[107-112cm]

Finished bust

Small	42½ ins	[108 cm]
Medium	45½ ins	[115.5 cm]
Large	49 ins	[124.5 cm]
X-Large	52 ins	[132 cm]

MATERIALS

Patons Decor (100 g/3.5 oz) or
Patons Classic Wool (100 g/3.5 oz)

Size	S	M	L	XL	
Main Color (MC) (Dk Grey)	4	4	4	4	balls
Contrast A (Med Grey)	4	4	4	4	balls
Contrast B (Med Brown)	2	2	2	2	balls
Contrast C (Red)	2	2	2	3	balls
Contrast D (Dk Green)	1	1	2	2	balls
Contrast E (White)	1	1	1	1	ball

Sizes 4 mm (U.S. 6) and 4.5 mm (U.S. 7) knitting needles **or size needed to obtain tension.** 1 st holder

TENSION

20 sts and 28 rows = 4 ins [10 cm] with larger needles in Texture Pat.

INSTRUCTIONS

The instructions are written for smallest size. If changes are necessary for larger sizes the instructions will be written thus ().

Note: When working from chart, carry yarn not in use loosely across WS of work but never over more than 5 sts. When it must pass over more than 5 sts, weave it over and under color in use on next st or at centre point of sts it passes over. The colors are never twisted around one another.

BACK

**With MC and smaller needles cast on 106 (114-122-130) sts.

Knit 3 rows (garter st) noting first row is **WS**. Change to larger needles and proceed as follows:

1st row: (RS). K1. *P2. K4. P2. Rep from * to last st. K1.

2nd and alt rows: Purl.

3rd row: K1. *P1. K6. P1. Rep from * to last st. K1.

5th row: K1. *K3. P2. K3. Rep from * to last st. K1.

7th row: K1. *K2. P4. K2. Rep from * to last st. K1.

9th row: K1. *K1. P6. K1. Rep from * to last st. K1.

11th row: As 7th row.

13th row: As 5th row.

15th row: As 3rd row.

17th row: As 1st row.

19th row: Knit.

20th row: Purl.

Proceed in Texture Pat as follows:

1st row: K1. *K2. P4. K2. Rep from * to last st. K1.

2nd and alt rows: Purl.

3rd row: K1. *K1. P2. K1. Rep from * to last st. K1.

5th row: K1. *P2. K4. P2. Rep from * to last st. K1.

7th row: K1. *P1. K6. P1. Rep from * to last st. K1.

9th row: As 5th row.

11th row: As 1st row.

13th row: K1. *K3. P2. K3. Rep from * to last st. K1.

14th row: Purl.

These 14 rows form Texture Pat.

Cont in Texture Pat until work from beg measures approx 9 ins [23 cm], ending on a 12th row of Texture Pat and inc 5 (5-7-7) sts evenly across last row. 111 (119-129-137) sts.

Work Chart I in stocking st to end of chart reading **knit** rows from **right** to left and **purl** rows from **left** to right.

Change to A and work 2 rows in stocking st dec 5 (5-7-7) sts evenly across last row.



ABBREVIATIONS: www.patonsyarns.com/abbreviations

Patons

... a part of your life.

P.O. Box 40, Listowel ON N4W 3H3

106 (114-122-130) sts.

Proceed in Texture Pat until work from beg measures 16½ ins [42 cm], ending with RS facing for next row.

Armhole shaping: Keeping cont of pat, cast off 7 (9-9-11) sts beg next 2 rows. 92 (96-104-108) sts.**

Cont even in pat until work from beg measures 24½ (25-25½-26) ins [62 (63.5-65-66) cm], ending with RS facing for next row.

Shoulder and neck shaping:

Next row: Pat across 37 (39-42-44) sts (neck edge). **Turn.** Leave rem sts on a spare needle.

Next row: (WS). Cast off 3 sts. Pat to end of row.

Next row: Cast off 9 (10-11-12) sts. Pat to end of row.

Rep last 2 rows once more.

Next row: Cast off 3 sts. Pat to end of row. Cast off rem 10 (10-11-11) sts.

With RS of work facing slip next 18 (18-20-20) sts from spare needle onto a st holder. Join yarn to rem sts and pat to end of row.

Work 1 row even in pat.

Next row: (RS). Cast off 3 sts. Pat to end of row.

Next row: Cast off 9 (10-11-12) sts. Pat to end of row.

Rep last 2 rows once more.

Next row: Cast off 3 sts. Pat to end of row. Cast off rem 10 (10-11-11) sts.

FRONT

Work from ** to ** as given for Back.

Cont even in pat until work from beg measures 22½ (23-23½-24) ins [57 (58.5-59.5-61) cm], ending with RS facing for next row.

Neck shaping: Next row: Pat across 38 (40-43-45) sts (neck edge). **Turn.** Leave rem sts on a spare needle.

Keeping cont of pat, dec 1 st at neck

edge on next 4 rows, then on following alt rows until there are 28 (30-33-35) sts. Cont even in pat until work from beg measures same length as Back to beg of shoulder shaping ending with RS facing for next row.

Shoulder shaping: Cast off 9 (10-11-12) sts beg next and following alt row.

Work 1 row even in pat.

Cast off rem 10 (10-11-11) sts.

With RS of work facing slip next 16 (16-18-18) sts from spare needle onto a st holder. Join yarn to rem sts and pat to end of row. Keeping cont of pat, dec 1 st at neck edge on next 4 rows then on following alt rows until there are 28 (30-33-35) sts.

Cont even in pat until work from beg measures same length as Back to beg of shoulder shaping ending with **WS** facing for next row.

Shoulder shaping: Cast off 9 (10-11-12) sts, beg next and following alt row.

Work 1 row even in pat.

Cast off rem 10 (10-11-11) sts.

SLEEVES

With MC and smaller needles cast on 50 (50-58-58) sts.

Knit 3 rows, noting that first row is **WS**.

Change to larger needles and work Chart II to end of chart reading **RS** rows from **right** to left and **WS** rows from **left** to right, inc 1 st each end on 3rd row, then every following 4th row to 70 (76-74-86), then every following 6th row to 78 (80-86-90) sts.

Next row: With A, knit inc 3 (3-5-5) sts evenly across. 81 (83-91-95) sts.

Beg on row 2, work Chart I in stocking st to end of chart, inc 1 st each end on 2nd, then every following 6th row to 93 (95-101-105) sts.

Next row: With A, knit.

Next row: Purl, dec 5 (3-3-3) sts evenly across row. 88 (92-98-102) sts.

Work Chart III to end of chart reading **RS** rows from **right** to left and **WS** rows from **left** to right noting side incs. 90 (96-100-106) sts.

Place markers on side edges of Sleeves 8 (10-14-16) rows down from cast off edge.

FINISHING

Pin garment pieces to measurements and cover with a damp cloth leaving to dry.

Neckband: Sew right shoulder seam. With RS of work facing, MC and smaller needles, pick up and knit 25 sts down left front neck edge. Knit across 16 (16-18-18) sts from front st holder. Pick up and knit 25 sts up right front neck edge. Pick up and knit 9 sts down back neck edge. Knit across 18 (18-20-20) sts from back st holder inc 0 (0-1-1) st at center. Pick up and knit 9 sts up back neck edge. 102 (102-107-107) sts. Knit 1 row.

Change to larger needles, A and proceed as follows:

1st row: (RS). Knit.

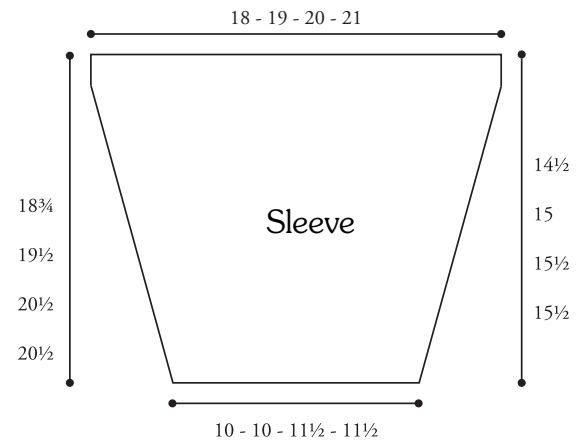
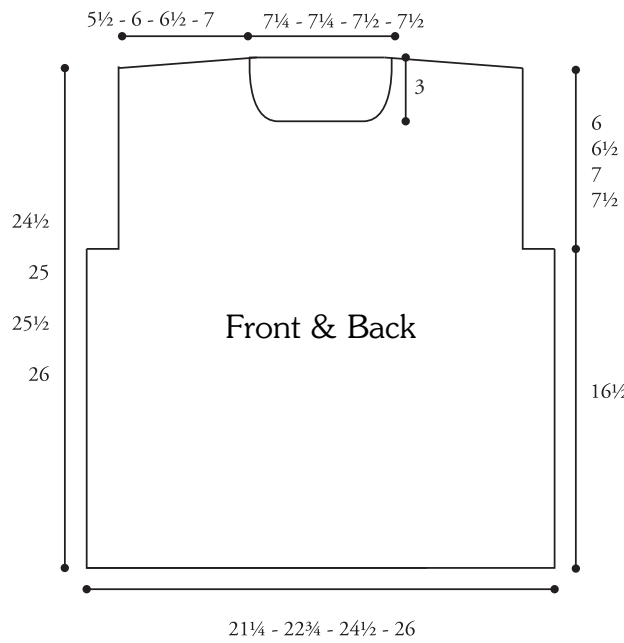
2nd row: *P3. K2. Rep from * to last 2 sts. P2.

3rd row: K2. *P2. K3. Rep from * to end of row.

Rep last 2 rows (P2. K3) ribbing twice more.

Change to smaller needles and cont in ribbing until neckband measures 3½ ins [9 cm] ending with RS facing for next row. Change to MC, cast off knitwise.

Sew left shoulder and neckband seam. Sew in Sleeves placing rows above markers along cast off sts at armholes of Front and Back to form square armholes. Sew side and sleeve seams.



Key

= Knit on RS, purl on WS.

= Purl on RS, knit on WS.

CHART II

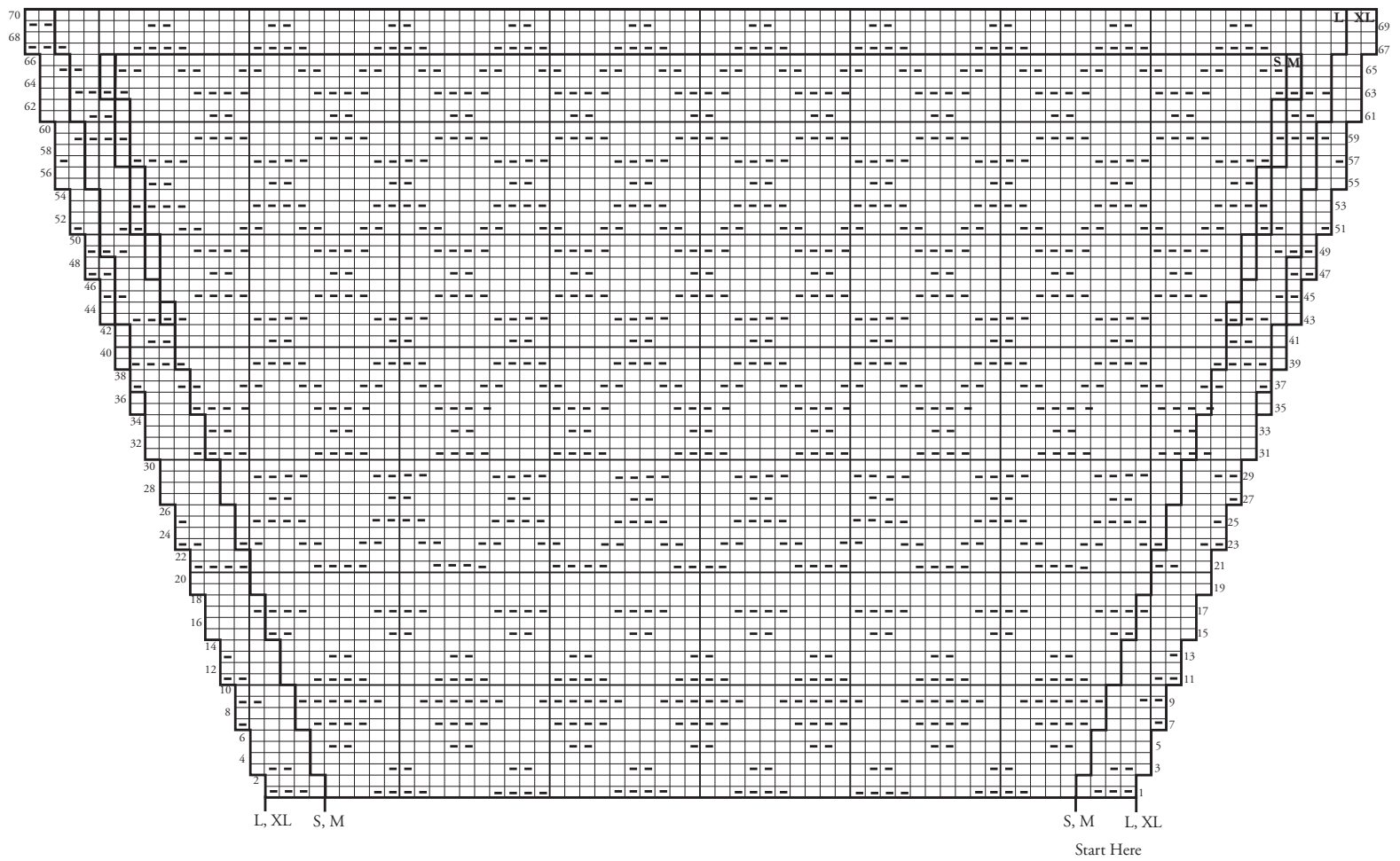


CHART III

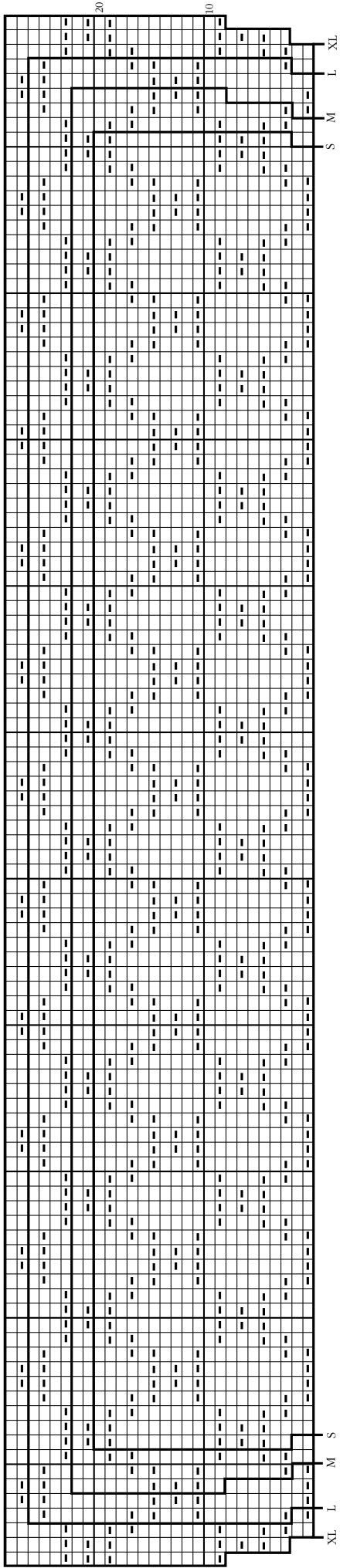
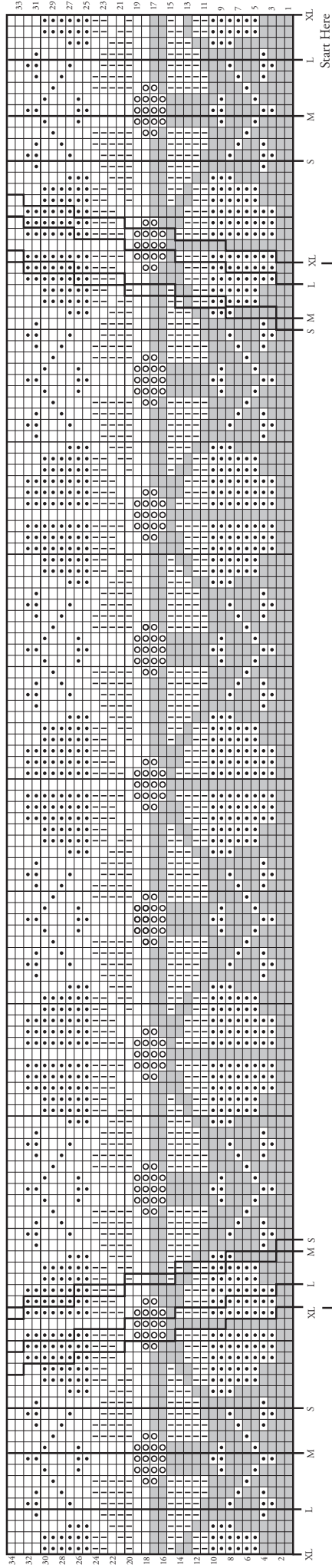


CHART I



- Key
- = Contrast A
 - = Contrast B
 - = Contrast C
 - = Contrast D
 - = Contrast E

Sleeves

Start Here