



MATERIALS

Patons® Alpaca Blend™ (3.5 oz/100 g; 155 yds/142 m)

Sizes	XS/S	M	L	XL	
Birch (01019)	8	9	10	11	balls

Sizes U.S. 9 (5.5 mm) and U.S. 10 (6 mm) knitting needles **or size needed to obtain gauge.** Cable needle. 2 stitch holders. 4 stitch markers.

GAUGE

15 sts and 20 rows = 4" [10 cm] in stocking st with larger needles.

ABBREVIATIONS: yarnspirations.com/abbreviations

Beg = Begin(ning)

Cr5B = Slip next 2 stitches onto cable needle and leave at back of work. K3, then P2 from cable needle

Cr5F = Slip next 3 stitches onto cable needle and leave at front of work. P2, then K3 from cable needle

C4B = Slip next 2 stitches onto cable needle and leave at back of work. K2, then K2 from cable needle.

C4F = Slip next 2 stitches onto cable needle and leave at front of work. K2, then K2 from cable needle.

C5B = Slip next 2 stitches onto cable needle and leave at back of work. K3, then K2 from cable needle

C5F = Slip next 3 stitches onto cable needle and leave at front of work. K2, then K3 from cable needle

C6B = Slip next 3 stitches onto cable needle and leave at back of work. K3, then K3 from cable needle.

C6F = Slip next 3 stitches onto cable needle and leave at front of work. K3, then K3 from cable needle.

Cont = Continue(ity)

Dec = Decrease(ing)

Inc = Increase(ing)

K = Knit

K1tbl = Knit into next stitch through back of loop

K2tog = Knit next 2 stitches together

P = Purl

P1tbl = Purl into next stitch through back of loop

P2tog = Purl next 2 stitches together

P2togtbl = Purl next 2 stitches together through back of loops

Pat = Pattern

Rem = Remain(ing)

Rep = Repeat

RS = Right side

Ssk = Slip next 2 stitches knitwise one at a time. Pass them back onto left-hand needle, then knit through back loops together

St(s) = Stitch(es)

WS = Wrong side



INTERMEDIATE

SIZES

To fit bust measurement

Extra-Small/Small	28-34" [71-86.5 cm]
Medium	36-42" [91.5-106.5 cm]
Large	44-46" [112-117 cm]
Extra-Large	48-50" [122-127 cm]

Finished bust

Extra-Small/Small	38" [96.5 cm]
Medium	43" [109 cm]
Large	48" [122 cm]
Extra-Large	52½" [133.5 cm]

INSTRUCTIONS

The instructions are written for smallest size. If changes are necessary for larger sizes the instructions will be written thus (). Numbers for each size are shown in the same color throughout the pattern. When only one number is given in black, it applies to all sizes.



Note: See Charts for all Cable Panels on page 5.

Cable Panel A (worked over 6 sts)

1st row: (RS). K6.

2nd row: P6.

3rd row: C6F.

4th row: P6.

These 4 rows form Cable Panel A.

Cable Panel B (worked over 6 sts)

1st row: (RS). K6.

2nd row: P6.

3rd row: C6B.

4th row: P6.

These 4 rows form Cable Panel B.

Cable Panel C (worked over 4 sts)

1st row: (RS). K4.

2nd row: P4.

3rd row: C4F.

4th row: P4.

These 4 rows form Cable Panel C.

Cable Panel D (worked over 4 sts)

1st row: (RS). K4.

2nd row: P4.

3rd row: C4B.

4th row: P4.

These 4 rows form Cable Panel D.

Cable Panel E (worked over 9 sts)

1st row: (RS). K9.

2nd and all WS rows: P9.

3rd row: C6F. K3.

5th row: K9.

7th row: K3. C6B.

8th row: P9.

These 8 rows form Cable Panel E.

Cable Panel F (worked over 15 sts)

1st row: (RS). K3. P4. C6B. P2.

2nd row: K2. P6. K4. P3.

3rd row: Cr5F. Cr5B. Cr5F.

4th row: P3. K4. P6. K2.

5th row: P2. C6F. P4. K3.

6th row: As 4th row.

7th row: Cr5B. Cr5F. Cr5B.

8th row: As 2nd row.

These 8 rows form Cable Panel F.

Cable Panel G (worked over 9 sts)

1st row: (RS). K9.

2nd and all WS rows: P9.

3rd row: K3. C6B.

5th row: K9.

7th row: C6F. K3.

8th row: P9.

These 8 rows form Cable Panel G.

BACK

Note: Back is 4½" [11.5 cm] longer than Front.

With smaller needles cast on **114 (130-146-162) sts.

1st row: (RS). *K2. P2. Rep from * to last 2 sts. K2.

2nd row: *P2. K2. Rep from * to last 2 sts. P2.

Rep last 2 rows (K2. P2) ribbing for 4½" [11.5 cm], ending on a 2nd row and inc **5 (7-9-11)** sts evenly across last row. **119 (137-155-173)** sts.

Change to larger needles and proceed in pat as follows:

1st row: (RS). (P3. Work 1st row Cable Panel A) **4 (5-6-7)** times. P2. Work 1st row Cable Panel E over 9 sts. P2. K1tbl. P2. Work 1st row Cable Panel F over 15 sts. P2. K1tbl. P2. Work 1st row Cable Panel G over 9 sts. P2. (Work 1st row Cable Panel B. P3) **4 (5-6-7)** times.

2nd row: (K3. Work 2nd row Cable Panel B) **4 (5-6-7)** times. K2. Work 2nd row Cable Panel G over 9 sts. K2. P1tbl. K2. Work 2nd row Cable Panel F over 15 sts. K2. P1tbl. K2. Work 2nd row Cable Panel E over

9 sts. K2. (Work 2nd row Cable Panel A. K3) **4 (5-6-7)** times.

Cable Panel pats are now in position.**

Cont in pat until work from beg measures 13" [33 cm], ending on a WS row. Place first set of markers at each end of last row.

*****1st dec row:** (RS). (P2tog. P1. Work appropriate row Cable Panel A) **4 (5-6-7)** times. P2. Work appropriate row Cable Panel E over 9 sts. P2. K1tbl. P2. Work appropriate row Cable Panel F over 15 sts. P2. K1tbl. P2. Work appropriate row Cable Panel G over 9 sts. P2. (Work appropriate row Cable Panel B. P2tog. P1) **4 (5-6-7)** times. **111 (127-143-159)** sts. Cont working Cable Panel pats as placed until work from beg measures approx 16" [40.5 cm], ending on a 4th row of Cable Panels A and B.

2nd dec row: (RS). (P2. K2. K2tog. K2) **4 (5-6-7)** times. P2. Work appropriate row Cable Panel E over 9 sts. P2. K1tbl. P2. Work appropriate row Cable Panel F over 15 sts. P2. K1tbl. P2. Work



appropriate row Cable Panel G over 9 sts. P2. (K2. K2tog. K2. P2) **4 (5-6-7)** times. **103 (117-131-145)** sts.

Next row: (WS). (K2. P5) **4 (5-6-7)** times. K2. Work appropriate row Cable Panel G over 9 sts. K2. P1tbl. K2. Work appropriate row Cable Panel F over 15 sts. K2. P1tbl. K2. Work appropriate row Cable Panel E over 9 sts. K2. (P5. K2) **4 (5-6-7)** times.

Proceed in pat as follows:

1st row: (RS). (P2. C5F) **4 (5-6-7)** times. P2. Work appropriate row Cable Panel E over 9 sts. P2. K1tbl. P2. Work appropriate row Cable Panel F over 15 sts. P2. K1tbl. P2. Work appropriate row Cable Panel G over 9 sts. P2. (C5B. P2) **4 (5-6-7)** times.

2nd row: (K2. P5) **4 (5-6-7)** times. K2. Work appropriate row Cable Panel G over 9 sts. K2. P1tbl. K2. Work appropriate row Cable Panel F over 15 sts. K2. P1tbl. K2. Work appropriate row Cable Panel E over 9 sts. K2. (P5. K2) **4 (5-6-7)** times.

3rd row: (P2. K5) **4 (5-6-7)** times. P2. Work appropriate row Cable Panel E over 9 sts. P2. K1tbl. P2. Work appropriate row Cable Panel F over 15 sts. P2. K1tbl. P2. Work appropriate row Cable Panel G over 9 sts. P2. (K5. P2) **4 (5-6-7)** times.

4th row: As 2nd row.

These 4 rows form side pat.

Cont in pat as established until work from first set of markers measures approx 6" [15 cm], ending on a 4th row.

3rd dec row: (RS). (P2. K2. K2tog. K1) **4 (5-6-7)** times. P2. Work appropriate row Cable Panel E over 9 sts. P2. K1tbl. P2. Work appropriate row Cable Panel F over 15 sts. P2. K1tbl. P2. Work appropriate row Cable Panel G over 9 sts. P2. (K1. K2tog. K2. P2) **4 (5-6-7)** times. **95 (107-119-131)** sts.

Next row: (WS). (K2. Work 2nd row Cable Panel D over 4 sts) **4 (5-6-7)** times. K2. Work appropriate row Cable Panel G over 9 sts. K2. P1tbl. K2. Work appropriate row Cable Panel F over 15 sts. K2. P1tbl. K2.

Work appropriate row Cable Panel E over 9 sts. K2. P1tbl. K2. (Work 2nd row Cable Panel C over 4 sts. K2) **4 (5-6-7)** times.

Cont in pat as established until work from first set of markers measures 8½" [21.5 cm], ending on a WS row.

Shape armholes: Keeping cont of pat, cast off **6 (6-10-10)** sts at beg of next 2 rows. **83 (95-99-111)** sts.

Next row: (RS). K1. ssk. Pat to last 3 sts. K2tog. K1.

Next row: P2. Pat to last 2 sts. P2. Rep last 2 rows **5 (5-7-7)** times more. **71 (83-83-95)** sts.***

Cont even in pat (working first and last 2 sts in stocking st as established) until armhole measures **8½ (9-9½-10)" [21.5 (23-24-25.5) cm]**, ending on a WS row.

Shape shoulders: Keeping cont of pat, cast off **9 (11-11-14)** sts at beg of next 2 rows, then **9 (12-12-14)** sts at beg of following 2 rows. Leave rem **35 (37-37-39)** sts on a st holder.

FRONT

Work from ** to ** as given for Back.

Cont in pat until work from beg measures 8½" [21.5 cm], ending on a WS row. Place first set of markers at each end of last row.

Work from *** to *** as given for Back.

Cont even in pat (working first and last 2 sts in stocking st as established) until armhole measures **5½ (6-6½-7)" [14 (15-16.5-18) cm]**, ending on a WS row.

Shape neck: Next row: (RS). Pat across **26 (31-31-36)** sts (neck edge). **Turn.** Leave rem sts on a spare needle.

Dec 1 st at neck edge on next 4 rows, then on RS rows only 4 times more. **18 (23-23-28)** sts rem. Cont even in pat until armhole measures same length as Back to beg of shoulder shaping, ending on a WS row.



Shape shoulder: Keeping cont of pat, cast off 9 (11-11-14) sts at beg of next row. Work 1 row even in pat. Cast off rem 9 (12-12-14) sts.

With RS facing, slip next 19 (21-21-23) sts onto a st holder. Join yarn to rem sts and pat to end of row.

Dec 1 st at neck edge on next 4 rows, then on RS rows only 4 times more. 18 (23-23-28) sts rem.

Cont even in pat until armhole measures same length as Back to beg of shoulder shaping, ending on a RS row.

Shape shoulder: Keeping cont of pat, cast off 9 (11-11-14) sts at beg of next row. Work 1 row even in pat. Cast off rem 9 (12-12-14) sts.

RIGHT SLEEVE

With smaller needles, cast on 38 (38-42-46) sts.

Work 3" [7.5 cm] in (K2. P2) ribbing as given for Back, ending on a 2nd row and inc 6 (12-14-10) sts evenly across last row. 44 (50-56-56) sts.

Change to larger needles and proceed in pat as follows:

1st row: (RS). *P2. Work 1st row Cable Panel D across 4 sts. Rep from * to last 2 sts. P2.

2nd row: *K2. Work 2nd row Cable Panel D across 4 sts. Rep from * to last 2 sts. K2.

Cable Panel is now in position.

Keeping cont of pat, work 2 rows even in pat.

Inc 1 st each end of needle on next and following 4th rows until there are 68 (74-80-80) sts, taking inc sts into (Cable Panel D. P2) pat rep. Cont even in pat until work from beg measures 18" [45.5 cm], ending on a WS row.

Shape top: Keeping cont of pat, cast off 6 (6-10-10) sts at beg of next 2 rows. 56 (62-60-60) sts.

Next row: (RS). K1. ssk. Pat to last 3 sts. K2tog. K1.

Next row: P2. Pat to last 2 sts. P2.

Rep last 2 rows 10 (9-13-15) times more. 34 (42-32-28) sts.

Next row: (RS). K1. ssk. Pat to last 3 sts. K2tog. K1.

Next row: P1. P2tog. Pat to last 3 sts. P2togbl. P1.

Rep last 2 rows 4 (6-3-2) times more. 14 (14-16-16) sts.

Cast off in pat.

LEFT SLEEVE

Work as for Right Sleeve, substituting Cable Panel C for D throughout.

FINISHING

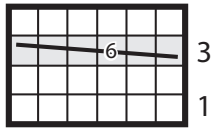
Pin all pieces to measurements. Cover with a damp cloth, leaving cloth to dry.

Collar: Sew left shoulder seam. With RS facing and smaller needles, pick up and knit 16 sts down left front neck edge. K19 (21-21-23) from Front st holder, dec 2 sts evenly across. Pick up and knit 16 sts up right front neck edge. K35 (37-37-39) from Back st holder, dec 2 sts evenly across. 82 (86-86-90) sts.

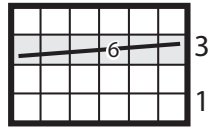
Beg on a 2nd row, work 3" [7.5 cm] in (K2. P2) ribbing as given for Back. Change to larger needles and cont in (K2. P2) ribbing until Collar measures 9" [23 cm]. Cast off in ribbing. Sew left shoulder and collar seam, reversing seam for turnback. Sew in sleeves.

Place markers on side edges of Back 9" [23 cm] above cast on edge. Sew side and sleeve seams, ending side seam at Back markers to make side slits (noting Back is 4½" [11.5 cm] longer than Front).

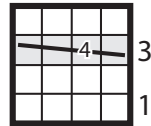




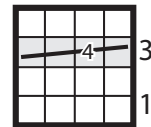
Cable Panel A



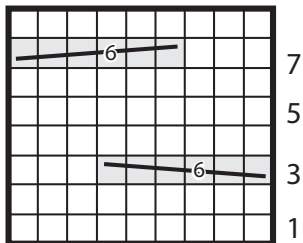
Cable Panel B



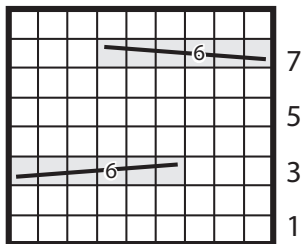
Cable Panel C



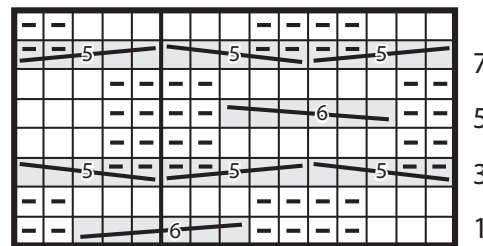
Cable Panel D



Cable Panel E





Cable Panel G



Cable Panel F

Key

-  = Knit on RS rows. Purl on WS rows
-  = Purl on RS rows. Knit on WS rows



= C4B



= C4F



= C6B



= C6F



= C5B



= C5F

