



KNIT | SKILL LEVEL: **INTERMEDIATE**

ABBREVIATIONS

Alt = Alternate(ing)

Approx = Approximately

Beg = Begin(ning)

C2B = Knit 2nd stitch, then knit first stitch through back loop behind just knit stitch. Slip both stitches off needle

C2F = Knit 2nd stitch through back loop, working behind first stitch. Knit first stitch. Slip both stitches off needle

Cont = Continue(ity)

Dec = Decreasing

K = Knit

P = Purl

Pat = Pattern

Rep = Repeat

RS = Right side

St(s) = Stitch(es)

MEASUREMENTS

Approx 48" x 55" [114 x 140 cm].

GAUGES

13 sts and 19 rows = 4" [10 cm] in stocking st.

14½ sts and 19 rows = 4" [10 cm] in pat.

INSTRUCTIONS

Cast on 175 sts. **Do not** join. Working back and forth across needle, proceed as follows:

1st row: (RS). K1. *P1. K1. Rep from * to end of row.

2nd row: P1. *K1. P1. Rep from * to end of row.

Rep last 2 rows of (K1. P1) ribbing 3 times more, dec 1 st at center of last row. 174 sts.

Proceed in Double Lattice Pat as follows (multiple of 14 sts + 6). (See chart on page 2).

1st row: (RS). K1. *(C2F) twice. K10. Rep from * to last 5 sts. (C2B) twice. K1.

2nd and alt rows: Purl.

3rd row: K2. *(C2F) twice. K8. C2B. Rep from * to last 4 sts. C2B. K2.

MATERIALS

Bernat® Wavelength™ (5 oz/140 g; 223 yds/204 m)

Opal (07003)

7 balls

Size U.S. 10½ (6.5 mm) circular knitting needle 36" [91.5 cm] long **or size needed to obtain gauge.**

5th row: K3. *(C2F) twice. K6. (C2B) twice. Rep from * to last 3 sts. K3.

7th row: K4. *(C2F) twice. K4. (C2B) twice. K2. Rep from * to last 2 sts. K2.

9th row: K5. *(C2F) twice. K2. (C2B) twice. K4. Rep from * to last st. K1.

11th row: K6. *(C2F) twice. (C2B) twice. K6. Rep from * to end of row.

13th row: K6. *K1. (C2F) twice. C2B. K7. Rep from * to end of row.

15th row: K6. *K2. (C2F) twice. K8. Rep from * to end of row.

17th row: K6. *K1. C2B. (C2F) twice. K7. Rep from * to end of row.

19th row: K6. *(C2B) twice. (C2F) twice. K6. Rep from * to end of row.

21st row: K5. *(C2B) twice. K2. (C2F) twice. K4. Rep from * to last st. K1.

23rd row: K4. *(C2B) twice. K4. (C2F) twice. K2. Rep from * to last 2 sts. K2.

25th row: K3. *(C2B) twice. K6. (C2F) twice. Rep from * to last 3 sts. K3.

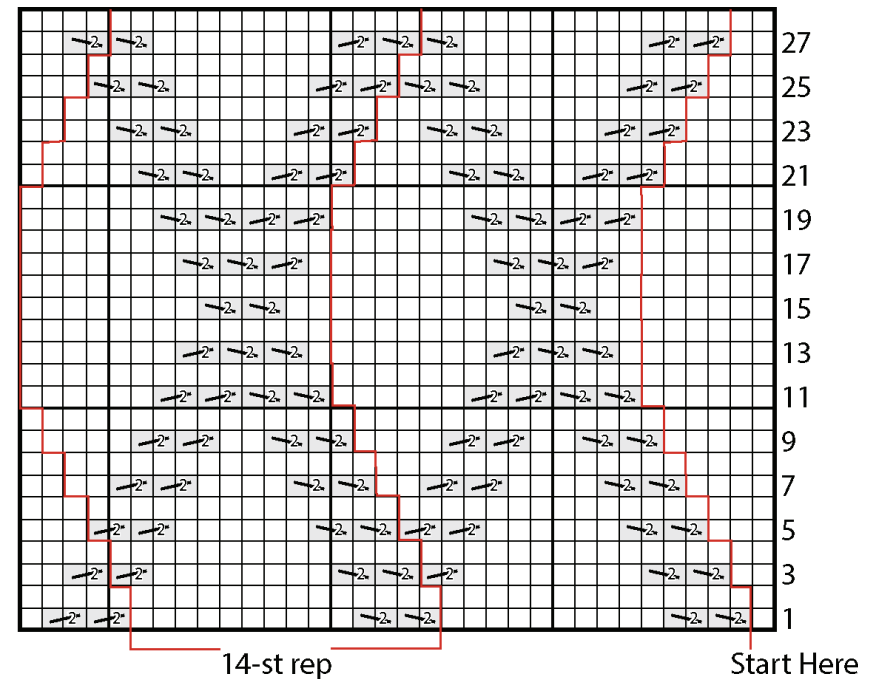
27th row: K2. (C2B) twice. K8. C2F. *C2F. C2B. K8. C2F. Rep from * to last 4 sts. C2F. K2.

28th row: As 2nd row.
Rep last 28 rows for Double Lattice Pat until work from beg measures approx 53" [134.5 cm], ending on a

16th or 28th row of pat and inc 1 st at end of last row. 175 sts.

Work 8 rows of (K1. P1) ribbing as given above.

Side edging: With RS facing, pick up and knit 199 sts evenly along side of Blanket. Beg on WS row, proceed in (K1. P1) ribbing as given above for 7 rows. Cast off in rib (RS).
Rep for other side.



Key

- = Knit on RS rows. Purl on WS rows.
- ☐ = C2B
- ☐ = C2F