





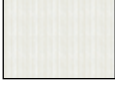




MEASUREMENT

Approx 14" [35.5 cm] long from cuff to heel.

MATERIALS

Bernat® Super Value™ (197 g/7 oz; 389 m/426 yds)		
Snowman Version		
	Main Color (MC) Lush (53246)	1 ball
	Contrast A Berry (00607)	1 ball
	Contrast B Winter White (07407)	1 ball
Tree Version		
	Main Color (MC) Berry (00607)	1 ball
	Contrast A Lush (53246)	1 ball
Snowflake Version		
	Main Color (MC) Peacock (00616)	1 ball
	Contrast A Winter White (07407)	1 ball

Set of 4 size 5 mm (U.S. 8) double-pointed knitting needles **or size needed to obtain gauge**. **Snowman Version:** Small amount of black embroidery floss for mouth and eyes. Small amount of orange embroidery floss for nose. 6 small jingle bells for hats.
All Versions: Stitch marker. Satin ribbon for hanging loop.

GAUGE

18 sts and 24 rows = 4" [10 cm] in stocking st.

ABBREVIATIONS

www.bernat.com/abbreviations

Approx = Approximate(ly) **St(s)** = Stitch(es)
Beg = Begin(ing) **Tog** = Together
Cont = Continue(ity) **W&T** = Bring yarn to front of work. Slip next stitch purlwise. Bring yarn to back of work. Slip stitch back onto left-hand needle. **Turn.**
K = Knit
K2tog = Knit next 2 stitches together
P = Purl
Rep = Repeat
Rem = Remain(ing)
Rnd(s) = Round(s)
RS = Right side
Ssk = Slip next 2 stitches knitwise one at a time. Pass them back onto left-hand needle, then knit through back loops together
WS = Wrong side

INSTRUCTIONS

Snowman Version

**With MC, cast on 60 sts loosely. Divide sts evenly onto 3 needles. Join in rnd, placing marker on first st.

1st rnd: *K2. P2. Rep from * around.

Rep last rnd of (K2. P2) ribbing 5 times more.

Knit 2 rnds even.**

Work Chart I to end of chart, *reading rows from right to left.* (See page 2).

***With MC only, cont knitting in rnds until work from beg measures 12" [30.5 cm]. Break MC.

Heel: Slip last 15 sts from 3rd needle and first 15 sts from 1st needle onto 1 needle for heel. Leave rem 30 sts on 2 needles for instep. Break MC. Join A to RS of work and proceed across 30 Heel sts as follows:

1st row: (RS). K29. W&T.

2nd row: K28. W&T.

3rd row: K27. W&T.

4th row: K26. W&T.

Cont as established until there are 10 'unwrapped' sts, ending on a WS row.

Next row: (RS). K11. W&T.

Next row: K12. W&T.

Next row: K13. W&T.

Next row: K14. W&T.

Cont as established until all Heel sts have been worked, ending on a RS row. Break A.

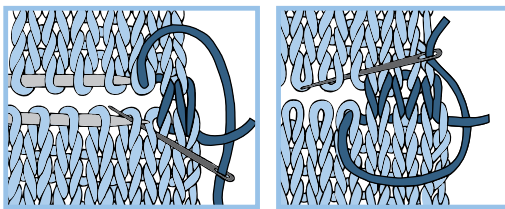
Divide 30 Heel sts onto 2 needles (15 sts each needle). Join MC to 1st needle. K15 on 1st needle. K30 on 2nd needle. K15 on 3rd needle. Place marker at beg of 1st needle to indicate beg of rnd.

Knit even in rnds until work from Heel measures 4" [10 cm]. Break MC.

Shape toe: 1st rnd: 1st needle: With A, knit to last 3 sts. K2tog. K1. **2nd needle:** K1. ssk. Knit to last 3 sts. K2tog. K1. **3rd needle:** K1. ssk. Knit to end of needle.

2nd rnd: Purl.

Rep last 2 rnds to 28 sts. Divide sts onto 2 needles. Graft 2 sets of 14 sts tog.***



Tree Version

Work from ** to ** as given for Snowman Version.

Work Chart II to end of chart, *reading rows from right to left*.

Work from *** to *** as given for Snowman Version.

Snowflake Version

Work from ** to ** as given for Snowman Version.

Work Chart III to end of chart, *reading rows from right to left*.

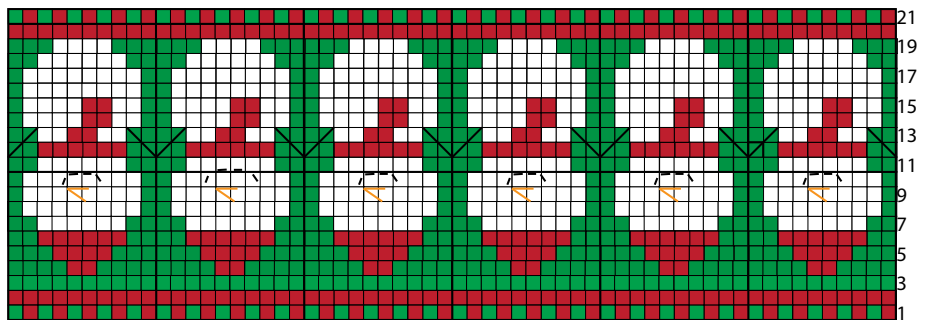
Work from *** to *** as given for Snowman Version.

FINISHING

Fold ribbon in half and sew to top edge of Stocking.

Snowman Version only: With black embroidery floss, using Chart I as a guide, embroider mouths and eyes. With orange embroidery floss and straight stitch, embroider nose. Glue one jingle bell onto top of each Snowman's hat.

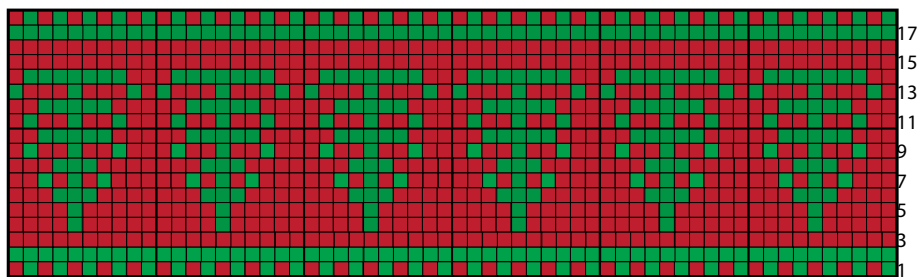
CHART I



start here

- Main Color (MC)
- Contrast A
- Contrast B

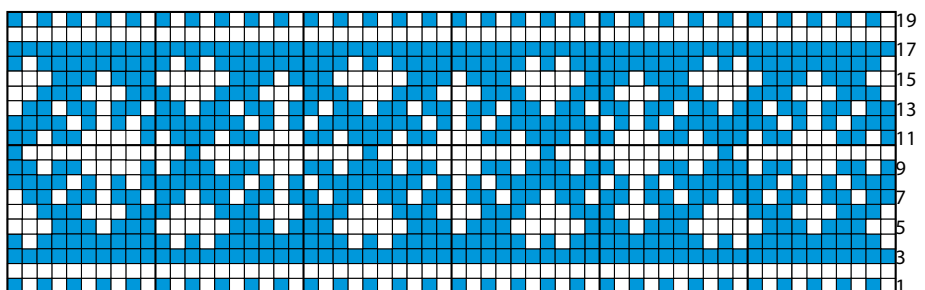
CHART II



start here

- Main Color (MC)
- Contrast A

CHART III



start here

- Main Color (MC)
- Contrast A