



chic sheep
by Marly Bird™

Structure Chic Sweater

The classic neutral shades and comfortable fit of this sweater will please the man with impeccable style. The interest is at the chest with a Box Pattern that complements small to 3X sizes.



LW6127

©2018 Coats & Clark



knitting

INTERMEDIATE

Designed by Therese Chynoweth

What you will need:

Red Heart® Chic Sheep by Marly Bird™: 6 (7, 8, 8, 9, 10) balls 5365 Leather **A**, 2 (2, 2, 2, 3, 3) balls 5360 Suede **B**, and 1 ball 5316 Linen **C**

Susan Bates® Knitting Needles: 5.5mm [US 9]

Susan Bates® Circular Knitting Needles: 5.5mm [US 9] 16" (40 cm)

Susan Bates® split lock stitch markers

Yarn needle

GAUGE: 18 sts and 27 rows = 4" (10 cm) in Sand Rib; 17 sts and 23 rows = 4" (10 cm) in Stockinette st, after blocking. **CHECK YOUR GAUGE.** Use any size needles to obtain the gauge.

BUY YARN



RED HEART® Chic Sheep by Marly Bird™, Art. R170 100% Merino Wool available 3.5 oz (100 g), 200 yd (183 m) balls

Directions are for size **S**; changes for sizes **M, L, XL, 2X, and 3X** are in parentheses.

Sweater measures **40 (44½, 48, 52½, 56, 60½)" (101.5 (113, 122, 133.5, 142, 153.5) cm) around chest and 25¾ (26½, 27¼, 28, 28¾, 29½)" (65.5 (67.5, 69, 71, 73, 75) cm) in length.**

SPECIAL STITCHES

M1 (make 1 increase) = Lift strand between needles to left-hand needle and work strand through the back loop, twisting it to prevent a hole, and knit it.

Ssk (slip, slip, knit) = Slip next 2 sts knitwise to right needle, insert point of left needle through front of sts, knit these sts together through back loop.

PATTERN STITCHES

Sand Rib

(Worked over an even number of sts)

Row 1 (right side): Knit.

Row 2: * P1, k1; repeat from * to end of row.

Repeat Rows 1 and 2 for Sand Rib.

2 x 2 Rib

(Worked over a multiple of 4 sts + 2)

Row 1 (wrong side): * P2, k2; repeat from * to last 2 sts, p2.

Row 2: * K2, p2; repeat from * to last 2 sts, k2.

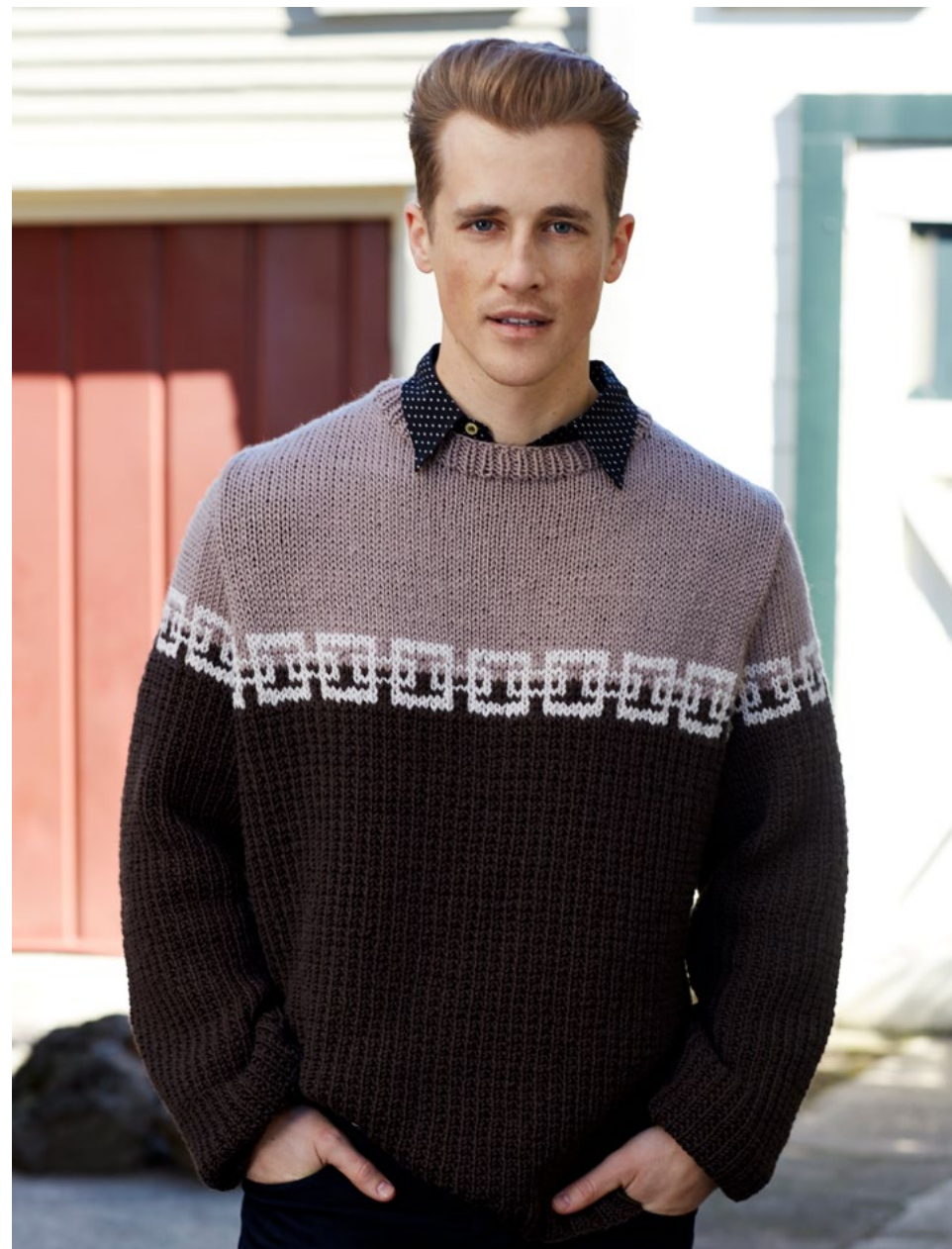
Repeat Rows 1 and 2 for 2 x 2 Rib.

BACK

With **A**, cast on 90 (98, 106, 118, 126, 134) sts.

Work in 2 x 2 Rib for 1½" (4 cm), beginning and ending with a wrong side row.

continued...





Next row (inc row, right side): Knit across, working 0 (2, 2, 0, 0, 2) M1 sts evenly spaced – 90 (100, 108, 118, 126, 136) sts.

Work in Sand Rib until piece measures 15¼ (15½, 15¾, 16, 16¼, 16½)" (38.5 (39.5, 40, 40.5, 41.5, 42) cm) from cast-on edge, beginning and ending with a wrong side row.

Shape Armholes and Begin Box Pattern

Row 1 (right side): Bind off 4 (5, 6, 8, 9, 11) sts, work in Sand Rib to end – 86 (95, 102, 110, 117, 125) sts.

Row 2: Bind off 4 (5, 6, 8, 9, 11) sts, work in Sand Rib to to end – 82 (90, 96, 102, 108, 114) sts.

Place a marker at center of row, then every 10 sts on each side of center marker – 9 (9, 9, 11, 11, 11) markers, 1 (5, 8, 1, 4, 7) sts outside markers each side.

Markers nearest the edges mark the beginning and end of Box Pattern. Beginning on the next row, work in Stockinette st, following Box Pattern color chart as follows: work last 1 (5, 8, 1, 4, 7) sts at end of color repeat, work color repeat 8 (8, 8, 10, 10, 10) times from first to last marker, then work first 1 (5, 8, 1, 4, 7) sts of color repeat. At the same time, continue shaping armhole, keeping Box Pattern intact as sts are bound off at the sides:

Row 3 (right side): Bind off 3 (3, 4, 4, 4, 4) sts, knit in Box Pattern to end – 79 (87, 92, 98, 104, 110) sts.

Row 4: Bind off 3 (3, 4, 4, 4, 4) sts, purl in Box Pattern to end – 76 (84, 88, 94, 100, 106) sts.

Row 5: Bind off 2 sts, knit in Box Pattern to end – 74 (82, 86, 92, 98, 104) sts.

Row 6: Bind off 2 sts, purl in Box Pattern to end – 72 (80, 84, 90, 96, 102) sts.

Row 7: Repeat Row 5 – 70 (78, 82, 88, 94, 100) sts.

Row 8: Repeat Row 6 – 68 (76, 80, 86, 92, 98) sts.

For last 2 sizes only:

Row 9: Repeat Row 5 – 90 (96) sts,

Row 10: Repeat Row 6 – 88 (94) sts.

Cut **A** and **C**, and continue in Stockinette st using **B** only.

For first 4 sizes only:

Next 2 rows:

Row 1 (decrease row, right side): K1, k2tog, knit to last 3 sts, ssk, k1 – 66 (74, 78, 84) sts.

Row 2: Purl.

Cut **A** and **C**, and continue in Stockinette st using **B** only.

For all sizes:

Next 2 rows:

Row 1 (dec row, right side): K1, k2tog, knit to last 3 sts, ssk, k1 – 64 (72, 76, 82, 86, 92) sts.

Row 2: Purl.

Repeat the last 2 rows 0 (2, 2, 4, 5, 7) more times – 64 (68, 72, 74, 76, 78) sts. Work evenly in Stockinette st until armholes measure 9 (9½, 10, 10½, 11, 11½)" (23 (24, 25.5, 26.5, 28, 29) cm), ending with a wrong side row.

Separate for Shoulders and Neck

Next row (right side): K21 (22, 24, 24, 25, 25) for Right Shoulder, bind off center 22 (24, 24, 26, 26, 28) sts, k21 (22, 24, 24, 25, 25) for Left Shoulder.

Left Neck and Shoulder

Work across 21 (22, 24, 24, 25, 25) Left Shoulder sts only as follows:

Row 1 (wrong side): Bind off 3 (4, 4, 4, 4, 4) sts, purl to end – 18 (18, 20, 20, 21, 21) sts.

Row 2: Bind off 4 sts, knit to end – 14 (14, 16, 16, 17, 17) sts.

Row 3: Bind off 4 (4, 4, 4, 5, 5) sts, purl to end. – 10 (10, 12, 12, 12, 12) sts.

Row 4: Bind off 2 sts, knit to end. – 8 (8, 10, 10, 10, 10) sts.

Row 5: Bind off 4 (4, 5, 5, 5, 5) sts, purl to end – 4 (4, 5, 5, 5, 5) sts.

Row 6: Knit.

Bind off remaining 4 (4, 5, 5, 5, 5) sts.

Right Neck and Shoulder

With wrong side facing, join yarn to 21 (22, 24, 24, 25, 25) Right Shoulder sts still on the needle.

Row 1 (wrong side): Purl.

Row 2: Bind off 3 (4, 4, 4, 4, 4) sts, knit to end – 18 (18, 20, 20, 21, 21) sts.

Row 3: Bind off 4 sts, purl to end – 14 (14, 16, 16, 17, 17) sts.

Row 4: Bind off 4 (4, 4, 4, 5, 5) sts, knit to end. – 10 (10, 12, 12, 12, 12) sts.

Row 5: Bind off 2 sts, purl to end. – 8 (8, 10, 10, 10, 10) sts.

Row 6: Bind off 4 (4, 5, 5, 5, 5) sts, knit to end – 4 (4, 5, 5, 5, 5) sts.

Bind off remaining 4 (4, 5, 5, 5, 5) sts.

FRONT

Work same as back until armholes measure 7¼ (7¾, 8, 8½, 8¾, 9½)" (18.5 (19.5, 20.5, 21.5, 22, 24) cm), ending with a wrong side row – 64 (68, 72, 74, 76, 78) sts.

Separate for Shoulders and Neck

Next row (right side): K26 (27, 29, 30, 31, 31) for Left Shoulder, bind off center 12 (14, 14, 14, 14, 16) sts, k26 (27, 29, 30, 31, 31) for Right Shoulder.

Right Neck and Shoulder

Work across 26 (27, 29, 30, 31, 31) Right Shoulder sts only as follows:

Shape Neck Edge

Row 1 (wrong side): Purl.

Row 2: Bind off 4 sts, knit to end – 22 (23, 25, 26, 27, 27) sts.

Row 3: Purl.

Row 4: Bind off 2 sts, knit to end – 20 (21, 23, 24, 25, 25) sts.

Row 5: Purl.

Row 6: Repeat Row 4 – 18 (19, 21, 22, 23, 23) sts.

Row 7: Purl.

Row 8: Bind off 1 st, knit to end – 17 (18, 20, 21, 22, 22) sts.

Repeat the last 2 rows 2 (2, 2, 3, 3, 3) more times – 15 (16, 18, 18, 19, 19) sts.

Work evenly in Stockinette st until armhole measures 9 (9½, 10, 10½, 11, 11½)" (23 (24, 25.5, 26.5, 28, 29) cm), ending with a right side row.

Shape Shoulder Edge

Row 1 (wrong side): Bind off 3 (4, 4, 4, 4, 4) sts, purl to end – 12 (12, 14, 14, 15, 15) sts.

Row 2: Knit.

Row 3: Bind off 4 (4, 4, 4, 5, 5) sts, purl to end – 8 (8, 10, 10, 10, 10) sts.

Row 4: Knit

Row 5: Bind off 4 (4, 5, 5, 5, 5) sts, purl to end – 4 (4, 5, 5, 5, 5) sts.

Row 6: Knit.

Bind off remaining 4 (4, 5, 5, 5, 5) sts.

continued...





Left Neck and Shoulder

With wrong side facing, join yarn to 17 (18, 20, 21, 22, 22) Left Shoulder sts still on the needle.

Shape Neck Edge

Row 1 (wrong side): Bind off 4 sts, purl to end – 22 (23, 25, 26, 27, 27) sts.

Row 2: Knit.

Row 3: Bind off 2 sts, purl to end – 20 (21, 23, 24, 25, 25) sts.

Row 4: Knit.

Row 5: Repeat Row 3 – 18 (19, 21, 22, 23, 23) sts.

Row 6: Knit.

Row 7: Bind off 1 st, purl to end – 17 (18, 20, 21, 22, 22) sts.

Row 8: Knit.

Repeat the last 2 rows 2 (2, 2, 3, 3, 3) more times – 15 (16, 18, 18, 19, 19) sts.

Work evenly in Stockinette st until armhole measures 9 (9½, 10, 10½, 11, 11½)" (23 (24, 25.5, 26.5, 28, 29) cm), ending with a wrong side row.

Shape Shoulder Edge

Row 1 (right side): Bind off 3 (4, 4, 4, 4, 4) sts, knit to end – 12 (12, 14, 14, 15, 15) sts.

Row 2: Purl.

Row 3: Bind off 4 (4, 4, 4, 5, 5) sts, knit to end – 8 (8, 10, 10, 10, 10) sts.

Row 4: Purl.

Row 5: Bind off 4 (4, 5, 5, 5, 5) sts, knit to end – 4 (4, 5, 5, 5, 5) sts.

Row 6: Purl.

Bind off remaining 4 (4, 5, 5, 5, 5) sts.

SLEEVES

With **A**, cast on 38 (42, 42, 46, 46, 50) sts.

Work in 2 x 2 Rib for 1½" (4 cm) beginning and ending with a wrong side row.

Work 4 rows in Sand Rib, beginning with a right side row and ending with a wrong side row.

Next row (increase row, right side): K1, M1, knit to last st, M1, k1 – 40 (44, 44, 48, 48, 52) sts.

Working in Sand Rib, repeat this increase row every 4 rows 0 (0, 4, 5, 9, 14) more times, then every 6 rows 16 (17, 15, 15, 13, 10) more times – 70 (76, 82, 88, 92, 100) sts.

Work evenly in Sand Rib until piece measures 18 (18½, 19½, 20, 20½, 21)" (45.5 (47, 49.5, 51, 52, 53.5) cm), ending with a wrong side row.

Shape Sleeve Cap and Begin Box Pattern

Row 1 (right side): Bind off 4 (5, 6, 8, 9, 11) sts, work in Sand Rib to end – 66 (71, 76, 80, 83, 89) sts.

Row 2: Bind off 4 (5, 6, 8, 9, 11) sts, work in Sand Rib to to end – 62 (66, 70, 72, 74, 78) sts.

Place a marker at center of row, then every 10 sts on each side of center marker – 7 markers, 1 (3, 5, 6, 7, 9) sts outside markers each side.

Markers nearest the edges mark the beginning and end of Box Pattern. Beginning on the next row, work in Stockinette st, following Box Pattern color chart as follows: work last 1 (3, 5, 6, 7, 9) sts sts at end of color repeat, work color repeat 6 times from first to last marker, then work first 1 (3, 5, 6, 7, 9) sts of color repeat.

At the same time, continue shaping Sleeve cap, keeping Box Pattern intact as sts are bound off at the sides:

Row 3 (right side): Bind off 3 (3, 4, 4, 4, 4) sts, knit in Box Pattern to end – 59 (63, 66, 68, 70, 74) sts.

Row 4: Bind off 3 (3, 4, 4, 4, 4) sts, purl in Box Pattern to end – 56 (60, 62, 64, 66, 70) sts.

Row 5: Bind off 2 sts, knit in Box Pattern to end – 54 (58, 60, 62, 64, 68) sts.

Row 6: Bind off 2 sts, purl in Box Pattern to end – 52 (56, 58, 60, 62, 66) sts.

Row 7: Repeat Row 5 – 50 (54, 56, 58, 60, 64) sts.

Row 8: Repeat Row 6 – 48 (52, 54, 56, 58, 62) sts.

For last 2 sizes only:

Row 9: Repeat Row 5 – 56 (60) sts,

Row 10: Repeat Row 6 – 54 (58) sts.

Cut **A** and **C**, and continue in Stockinette st using **B** only.

For first 4 sizes only:

Next 2 rows:

Row 1 (decrease row, right side): K1, k2tog, knit to last 3 sts, ssk, k1 – 46 (50, 52, 54) sts.

Row 2: Purl.

Cut **A** and **C**, and continue in Stockinette st using **B** only.

For all sizes:

Next 2 rows:

Row 1 (decrease row, right side): K1, k2tog, knit to last 3 sts, ssk, k1 – 44 (48, 50, 52, 52, 56) sts.

Row 2: Purl.

Repeat the last 2 rows 7 (8, 9, 10, 11, 12) more times – 30 (32, 32, 32, 30, 32) sts,

Next 2 rows:

Row 1 (right side): Bind off 2 sts, knit to end – 28 (30, 30, 30, 28, 30) sts.

Row 2: Bind off 2 sts, purl to end – 26 (28, 28, 28, 26, 28) sts.

Repeat the last 2 rows 0 (0, 0, 0, 1, 0) more times – 26 (28, 28, 28, 22, 28) sts.

Next 2 rows:

Row 1 (right side): Bind off 3 sts, knit to end – 23 (25, 25, 25, 19, 25) sts.

Row 2: Bind off 3 sts, purl to end – 20 (22, 22, 22, 16, 22) sts.

Repeat the last 2 rows 1 (1, 1, 1, 0, 1) more times – 14 (16, 16, 16, 16, 16) sts.

Bind off all remaining sts.

FINISHING

Block pieces to measurements.

Sew shoulder seams.

Neckband

With **B**, circular needle and right side facing, pick up and knit 54 (56, 58, 60, 62, 64) sts evenly across Front Neck edge, then 42 (44, 44, 46, 46, 48) sts across Back Neck edge – 96 (100, 102, 106, 108, 112) sts.

Join round and mark first st.

Round 1: * K1, p1; repeat from * around.

Repeat this round until Neckband measures 1" (2.5 cm).

Bind off all sts loosely in rib pattern.

Sew in Sleeve caps.

Sew side and Sleeve seams.

Weave in all loose ends.

continued...



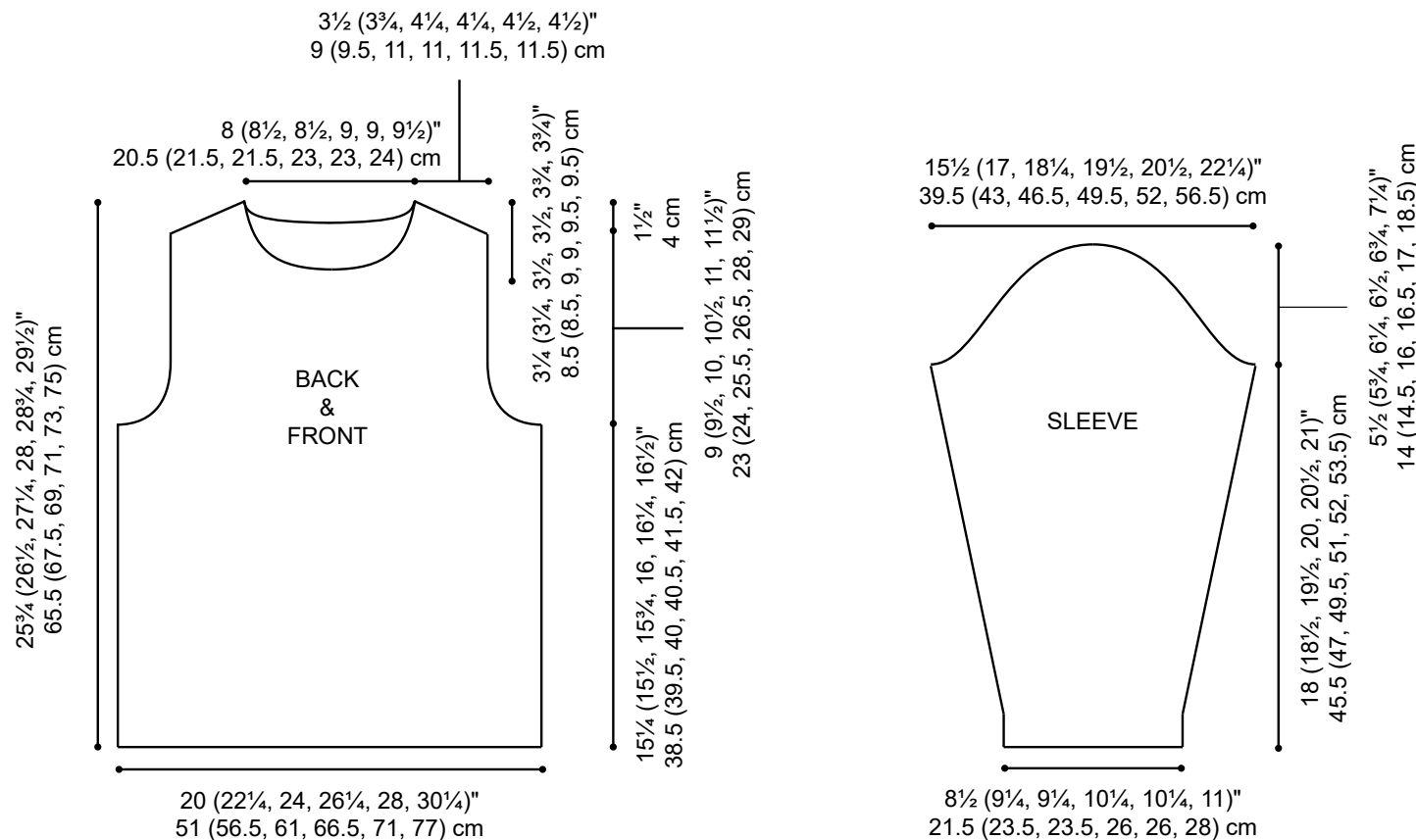


ABBREVIATIONS

A, B, C = Color A, Color B, Color C etc;
dec = decrease; **inc** = increase; **k** = knit;
k2tog = knit next 2 sts together; **p** =
 purl; **st(s)** = stitch(es); * **or** ** = repeat
 whatever follows the * or ** as indicated.

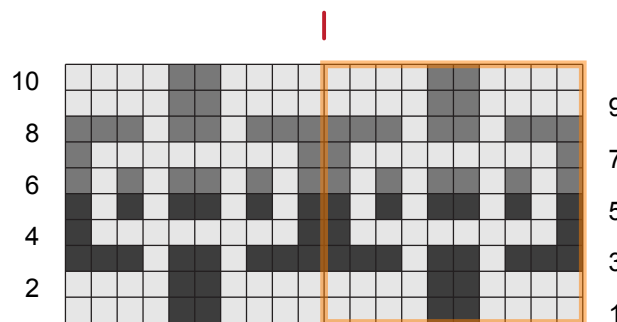
Note from Marly: I would like to thank
 Therese Chynoweth for her contribution to
 the Chic Sheep by Marly Bird™ collection. This
 comfortable and casual mens sweater is a
 perfect piece to wear anytime of day. Choose
 a combination of any 3 colors to really make
 this pattern your own. To learn more about
 Teresa Chenoweth and her designs visit her
 Ravelry page www.ravelry.com/designers/therese-chynoweth

Color chart on page 6
 Alternate photo on page 7





Key:
 ■ A ■ C
 □ B □ Repeat



center of piece



