



**PATONS® CLASSIC WOOL DK SUPERWASH™
CRAZY FOR COLOR CAP (TO KNIT)**

SIZE
One size to fit average woman's head.

MATERIALS
Patons® Classic Wool DK Superwash™ (50 g/1.75 oz; 114 m/125 yds)

- Main Color (MC):** Pumpkin (12630) **1 ball**
- Contrast A:** Mallard Teal (12203) **1 ball**
- Contrast B:** Apple Green (12223) **1 ball**
- Contrast C:** Aran (12008) **1 ball**
- Contrast D:** Eggplant (12310) **1 ball**

Set of five sizes 3.5 mm (U.S. 4) and 4 mm (U.S. 6) double-pointed knitting needles **or size needed to obtain tension.** Stitch marker.

TENSION
22 sts and 28 rows = 4" [10 cm] in stocking st with larger needles.

STITCH GLOSSARY
www.patonsyarns.com/abbreviations

- | | | |
|-------------------------------|--|---------------------------|
| Approx = Approximately | K2(3)tog = Knit next 2(3) stitches together | Rep = Repeat |
| Beg = Beginning | P = Purl | Rnd(s) = Round(s) |
| Dec = Decrease(ing) | Pat = Pattern | RS = Right side |
| Inc = Increase(ing) | Rem = Remaining | St(s) = Stitch(es) |
| K = Knit | | WS = Wrong side |

INSTRUCTIONS

Note: When working from charts, carry colors not in use loosely across WS of work. The colors are never twisted around one another.

With MC and smaller needles, cast on 96 sts.
Divide sts on 4 needles as (24, 24, 24, 24) sts.
Join in rnd, placing a marker on first st.

1st rnd: *K2. P2. Rep from * around.
Rep last rnd of (K2. P2) ribbing for 1¼" [3 cm].

Change to larger needles and knit 2 rnds, inc 8 sts evenly across 2nd rnd. 104 sts.

Work Chart I to end of chart, reading rnds from **right** to left, noting 4 st rep will be worked 26 times. (See Chart I).

Next rnd: With A, *K4. K2tog. K5. K2tog. Rep from * around. 88 sts.

Work Chart II to end of chart, reading rnds from **right** to left, noting 8 st rep will be worked 11 times. 44 sts rem. (See Chart II).

Next rnd: With A, *K3tog. Rep from * to last 2 sts. K2. 16 sts. Break yarn leaving a long end. Draw end tightly through rem sts.

Chart I

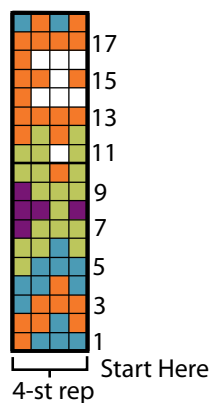
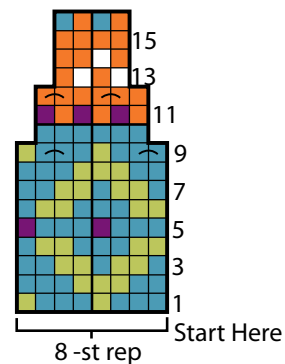


Chart II



Key

- = Main Color (MC)
- = Contrast A
- = Contrast B
- = Contrast C
- = Contrast D
- = With MC, K2tog
- = With Contrast A, K2tog



P.O. Box 40, Listowel ON N4W 3H3

www.patonsyarns.com

