

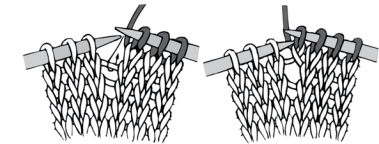


KNIT | SKILL LEVEL: **INTERMEDIATE**

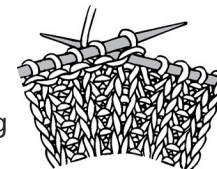
## ABBREVIATIONS

- Alt** = Alternate
- Approx** = Approximately
- Beg** = Beginning
- C3(5)B** = Slip next 1 (2) stitches onto cable needle and leave at back of work. K2 (3), then K1 (2) from cable needle.
- C3(5)F** = Slip next 2 (3) stitches onto cable needle and leave at front of work. K1 (2), then K2 (3) from cable needle.
- C4(6)B** = Slip next 2 (3) stitches onto cable needle and leave at back of work. K2 (3), then K2 (3) from cable needle.
- C4(6)F** = Slip next 2 (3) stitches onto cable needle and leave at front of work. K2 (3), then K2 (3) from cable needle.
- Cont** = Continue(ity)
- K** = Knit
- K1below** = Knit into next stitch 1 row below, at same time slipping off stitch above
- K1tbl** = Knit next stitch through back of loop
- K2tog** = Knit next 2 stitches together

**Kfb** = Increase 1 stitch by knitting into front and back of next stitch  
**M1** = Make 1 stitch by picking up horizontal loop lying before next stitch and knitting into back of loop.



- Pat** = Pattern
- P** = Purl
- PM** = Place marker
- PssO** = Pass slipped stitch over
- Rem** = Remain(ing)
- Rep** = Repeat
- Rnd(s)** = Round(s)
- RS** = Right side
- Sl1K** = Slip next stitch knitwise
- Sl1P** = Slip next stitch purlwise
- Ssk** = Slip next 2 stitches knitwise one at a time. Pass them back onto left-hand needle, then knit through back loops together
- St(s)** = Stitch(es)
- Tog** = Together
- WS** = Wrong side



## MATERIALS

**Red Heart® Super Saver® Brushed™** (5 oz/141 g; 253 yds/231 m)

Sizes	Hat	Mittens	Cowl	Set	
<b>Contrast A</b> Mink (5031)	1	1	1	1	<b>ball</b>
<b>Contrast B</b> Soft Mink (5030)	1	1	1	1	<b>ball</b>
<b>Contrast C</b> Clay (5092)	1	1	1	1	<b>ball</b>

**Cowl:** Size U.S. 9 (5.5 mm) Susan Bates® Silvalume® knitting needles **or size needed to obtain gauge.** Susan Bates® cable needle. Susan Bates® stitch marker. Susan Bates® yarn needle.

**Hat:** Size U.S. 8 (5 mm) Susan Bates® Silvalume® circular knitting needle 16" [40.5 cm] long. Set of 4 size U.S. 8 (5 mm) Susan Bates® double-pointed knitting needles **or size needed to obtain gauge.** Susan Bates® cable needle. Susan Bates® stitch marker. Susan Bates® yarn needle.

**Mittens:** Set of 4 size U.S. 6 (4 mm) Susan Bates® Silvalume® double-pointed knitting needles **or size needed to obtain gauge.** Susan Bates® cable needle. Susan Bates® stitch marker. Susan Bates® stitch holder. Susan Bates® yarn needle.

## MEASUREMENTS

**Hat:** One size to fit Adult.

**Mittens:** One size to fit palm 7½" [19 cm].

**Cowl:** Approx 27" [68.5 cm] circumference x 15½" [39.5 cm] deep.

## GAUGES

**Hat:** 17 sts and 23 rows = 4" [10 cm] with U.S. 8 (5 mm) knitting needles in stocking st.

**Mittens:** 19 sts and 25 rows = 4" [10 cm] with U.S. 6 (4 mm) knitting needles in stocking st.

**Cowl:** 16 sts and 22 rows = 4" [10 cm] with U.S. 9 (5.5 mm) knitting needles in stocking st.

## INSTRUCTIONS

### COWL

With A and size U.S. 9 (5.5 mm) needles, cast on 83 sts.

**Foundation row:** (WS). [(K1. P1) 3 times. K1. P12] 4 times. (K1. P1) 3 times. K1.

Proceed in pat as follows (see Chart I on page 4):

**1st row:** (RS). Sl1P. [(K1below. P1) 3 times. K12. P1] 4 times. (K1below. P1) 3 times.

**2nd and alt rows:** Sl1K. (K6. P12. K1) 4 times. K6.

**3rd and 5th rows:** As 1st row.

**7th row:** Sl1P. [(K1below. P1) 3 times. C6B. C6F. P1] 4 times. (K1below. P1) 3 times.

**8th row:** As 2nd row.

These 8 rows form Shaker Cable Pat.

Cont in pat until work from beg measures 9" [23 cm], ending on a WS row. Break A.

With B, cont in pat until work from beg measures 18" [45.5 cm], ending on a WS row. Break B.

With C, cont in pat until work from beg measures approx 27" [68.5 cm], ending on an 8th row of pat. Cast off.

Sew cast on and cast off edges tog.

### HAT

With circular needle and A, cast on 100 sts. Join in rnd. PM for beg of rnd.

**1st rnd:** \*K1. P1. Rep from \* around.

Rep last rnd of (K1. P1) ribbing for 3" [7.5 cm].

**Next rnd:** (K7. M1) 14 times. Knit to end of rnd. 114 sts. Break A.

With B, proceed in Shaker Cable Pat as follows: (See Chart I on page 4).

**1st rnd:** With B, \*(P1. K1) 3 times. P1. K12. Rep from \* around.

**2nd and alt rnds:** \*(P1. K1below) 3 times. P1. K12. Rep from \* around.

**3rd and 5th rnds:** As 1st rnd.

**7th rnd:** \*(P1. K1) 3 times. P1. C6B. C6F. Rep from \* around.

**8th rnd:** \*(P1. K1below) 3 times. P1. K12. Rep from \* around.

These 8 rnds form Shaker Cable Pat.

Cont in pat until work from beg measures approx 8" [20.5 cm], ending on 8th row of pat. Break B.

**Note:** Change to set of double-pointed needles where appropriate during crown shaping. (See Chart II on page 4).

**Shape crown: 1st rnd:** With C, \*(P1.K1) 3times. P1. ssk. K8. K2tog. Rep from \* around. 102 sts.

**2nd rnd:** \*(P1. K1below) 3 times. P1. K10. Rep from \* around.

**3rd rnd:** \*P1. Sl1K. K2tog. psso. P1. K1. P1. K10. Rep from \* around. 90 sts.

**4th rnd:** \*(P1. K1below) twice. P1. K10. Rep from \* around.

**5th rnd:** \*(P1. K1) twice. P1. C5B. C5F. Rep from \* around.

**6th rnd:** \*(P1. K1below) twice. P1. ssk. K6. K2tog. Rep from \* around. 78 sts.

**7th rnd:** \*(P1. K1) twice. P1. K8. Rep from \* around.

**8th rnd:** \*(P1. K1below) twice. P1. K8. Rep from \* around.

**9th rnd:** \*P1. Sl1K. K2tog. psso. P1. K8. Rep from \* around. 66 sts.

**10th rnd:** \*P1. K1below. P1. C4B. C4F. Rep from \* around.

**11th rnd:** \*P1. K1. P1. K8. Rep from \* around.

**12th rnd:** \*P1. K1below. P1. ssk. K4. K2tog. Rep from \* around. 54 sts.

**13th rnd:** \*P1. K1. P1. K6. Rep from \* around.

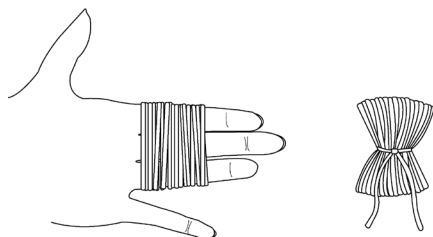
**14th rnd:** \*P1. K1below. P1. C3B. C3F. Rep from \* around.

**15th rnd:** \*Sl1K. K2tog. psso. ssk. K6. Rep from \* around. 42 sts.

**16th rnd:** \*P1. ssk. K2. K2tog. Rep from \* around. 30 sts.

Break yarn, leaving a long end. Thread end through rem sts. Pull tightly. Fasten securely.

**Pom-pom:** Wind C around 3 fingers 100 times. Tie tightly in the middle and leave a long end for attaching to Hat. Cut loops at both ends and trim to smooth round shape. Sew securely to top of Hat.



## MITTENS RIGHT MITTEN

**Shaker Cable Panel Pat** (worked over 26 sts)

**Note:** Chart rnds are read from *right to left*.

See Chart II on page 4.

**1st rnd:** (P1. K1) 3 times. P1. K12. (P1. K1) 3 times. P1.

**2nd and alt rnds:** (P1. K1below) 3 times. P1. K12. (P1. K1below) 3 times. P1.

**3rd and 5th rnds:** As 1st rnd.

**7th rnd:** (P1. K1) 3 times. P1. C6B. C6F. (P1. K1) 3 times. P1.

**8th rnd:** (P1. K1below) 3 times. P1. K12. (P1. K1below) 3 times. P1.

These 8 rnds form Shaker Cable Panel Pat.

\*\*With set of size U.S. 6 (4 mm) double-pointed needles and A, cast on 36 sts. Divide sts onto 3 needles (12 sts on each needle). PM for beg of rnd.

**1st row:** \*K1. P1. Rep from \* around.

Rep last rnd of (K1. P1) ribbing for 2" [5 cm].

**Next rnd:** (K4. M1. K5. M1) 4 times. Knit to end of rnd. 44 sts.\*\*

**Next rnd:** (P1. K1) 3 times. P1. K12. (P1. K1) 3 times. P1. Knit to end of rnd.

Proceed in pat as follows:

**1st rnd:** Work 1st row of Shaker Cable Panel Pat across 26 sts. Knit to end of rnd.

**2nd rnd:** Work 2nd row of Shaker Cable Panel Pat across 26 sts. Knit to end of rnd.

Shaker Cable Panel Pat is now in position. Keeping cont of pat, work 6 rnds more. Break A.

**Shape thumb gusset:** With B, keeping cont of pat, proceed as follows:

**1st rnd:** Pat across 26 sts. (Kfb) twice. Knit to end of rnd. 44 sts.

**2nd and alt rnds:** Work even in pat.

**3rd rnd:** Pat across 26 sts. Kfb. K2. Kfb. Knit to end of rnd. 46 sts.

**5th rnd:** Pat across 26 sts. Kfb. K4. Kfb. Knit to end of rnd. 48 sts

**7th rnd:** Pat across 26 sts. Kfb. K6. Kfb. Knit to end of rnd. 50 sts.

**9th rnd:** Pat across 26 sts. Kfb. K8. Kfb. Knit to end of rnd. 52 sts.

**11th rnd:** Pat across 26 sts. Kfb. K10. Kfb. Knit to end of rnd. 54 sts.

**13th rnd:** Pat across 26 sts. Slip next 14 sts onto a st holder. Cast on 2 sts. Knit to end of rnd. 44 sts.

Cont even in pat until work **after ribbing** measures approx 4" [10 cm]. Break B.

With C, cont even in pat until work **after ribbing** measures approx 6" [15 cm].

**Shape top:** With C, proceed as follows:

**1st rnd:** ssk. Pat across 22 sts. K2tog. ssk. K14. K2tog. 40 sts.

**2nd rnd:** Work even in pat.

**3rd rnd:** ssk. Pat across 20 sts. K2tog. ssk. K12. K2tog. 36 sts.

**4th rnd:** Work even in pat.

**5th rnd:** ssk. Pat across 18 sts. K2tog. ssk. K10. K2tog. 32 sts.

**6th rnd:** Work even in pat.

**7th rnd:** ssk. Pat across 16 sts. K2tog. ssk. K8. K2tog. 28 sts.

**8th rnd:** ssk. Pat across 14 sts. K2tog. ssk. K6. K2tog. 24 sts.

**9th rnd:** ssk. K2. (K2tog) 5 times. ssk. K6. K2tog. 16 sts.

**10th rnd:** (ssk. K4. K2tog) twice. 12 sts.

Graft 2 sets of 6 sts tog.

**\*\*\*Thumb:** With B, K14 from st holder. Pick up and knit 2 sts at base of thumb. Divide these 16 sts onto 3 needles: (5, 5, 6). Join in rnd. Knit 10 rnds even, changing to C to match Palm of Mitten.

**Next rnd:** (K2. K2tog) 4 times. 12 sts.

**Next rnd:** (K2tog) 6 times.

Break yarn leaving a long end. Thread end through rem 6 sts. Draw up and fasten securely.\*\*\*

## LEFT MITTEN

Work from \*\* to \*\* as given for Right Mitten.

**Next rnd:** K18. (P1. K1) 3 times. P1. K12. (P1. K1) 3 times. P1.

Proceed in pat as follows:

**1st rnd:** K18. Work 1st row of Shaker Cable Panel Pat across 26 sts.

**2nd rnd:** K18. Work 2nd row of Shaker Cable Panel Pat across 26 sts.

Shaker Cable Panel Pat is now in position.

Keeping cont of pat, work 8 rnds more. Break A.

**Shape thumb gusset:** With B, keeping cont of pat, proceed as follows:

**1st rnd:** K16. (Kfb) twice. Pat to end of rnd.

**2nd and alt rnds:** Work even in pat.

**3rd rnd:** K16. Kfb. K2. Kfb. Pat to end of rnd.

**5th rnd:** K16. Kfb. K4. Kfb. Pat to end of rnd.

**7th rnd:** K16. Kfb. K6. Kfb. Pat to end of rnd.

**9th rnd:** K16. Kfb. K8. Kfb. Pat to end of rnd. 54 sts.

**11th rnd:** K16. Kfb. K10. Kfb. Pat to end of rnd. 56 sts.

**13th rnd:** K16. Slip next 14 sts onto a st holder. Cast on 2 sts. Pat to end of rnd. 44 sts.

Cont even in pat until work **after ribbing** measures approx 4" [10 cm]. Break B.

With C, cont even in pat until work **after ribbing** measures approx 6" [15 cm].

**Shape top:** With C, proceed as follows:

**1st rnd:** ssk. K14. K2tog. ssk. Pat across 22 sts. K2tog. 40 sts.

**2nd rnd:** Work even in pat.

**3rd rnd:** ssk. K12. K2tog. ssk. Pat across 20 sts. K2tog. 36 sts.

**4th rnd:** Work even in pat.

**5th rnd:** ssk. K10. K2tog. ssk. Pat across 18 sts. K2tog. 32 sts.

**6th rnd:** Work even in pat.

**7th rnd:** ssk. K8. K2tog. ssk. Pat across 16 sts. K2tog. 28 sts.

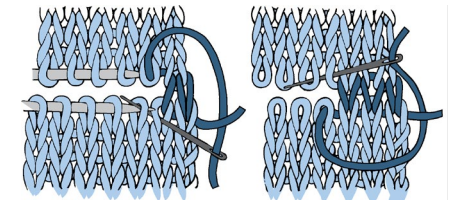
**8th rnd:** ssk. K6. K2tog. ssk. Pat across 14 sts. K2tog. 24 sts.

**9th rnd:** ssk. K6. K2tog. (ssk) 5 times. K2. K2tog. 16 sts.

**10th rnd:** (ssk. K4. K2tog) twice. 12 sts.

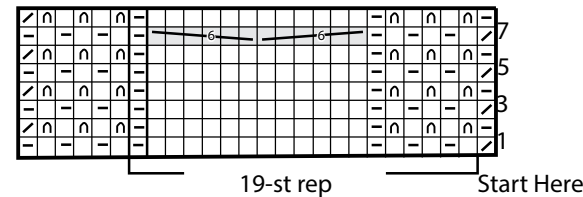
Graft 2 sets of 6 sts tog.

**Thumb:** Work from \*\*\* to \*\*\* as given for Right Mitten.

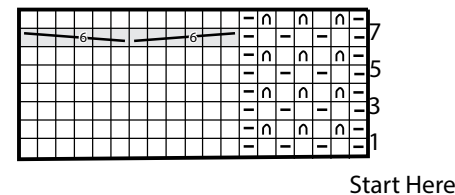


GRAFTING DIAGRAM

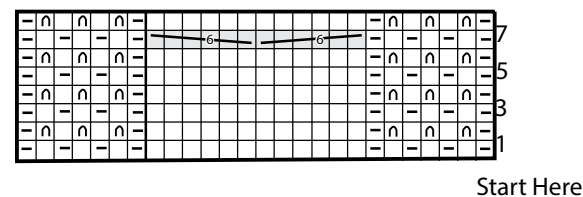
COWL



HAT



MITTENS



### Key

- = Knit on RS rows. Rurl on WS rows.
- = Purl on RS rows. Knit on WS rows.
- = C6B
- = C6F
- = Sl1P on RS rows. Sl1K on WS rows.
- = K1below

